



Michigan Inland Lakes Convention



Boyne Mountain Resort – April 2016



Michigan Inland Lakes Convention

FINDING FUNDS TO DEAL WITH AQUATIC INVASIVE SPECIES (AIS)

Paul J. Sniadecki

President Emeritus - Eagle Lake Improvement Association

www.EagleLakeMichigan.org

Former Zoning Admin/Planner

Comstock Charter & Milton Townships

Deputy Supervisor, Ontwa Township

Finding Funds to Deal with AIS



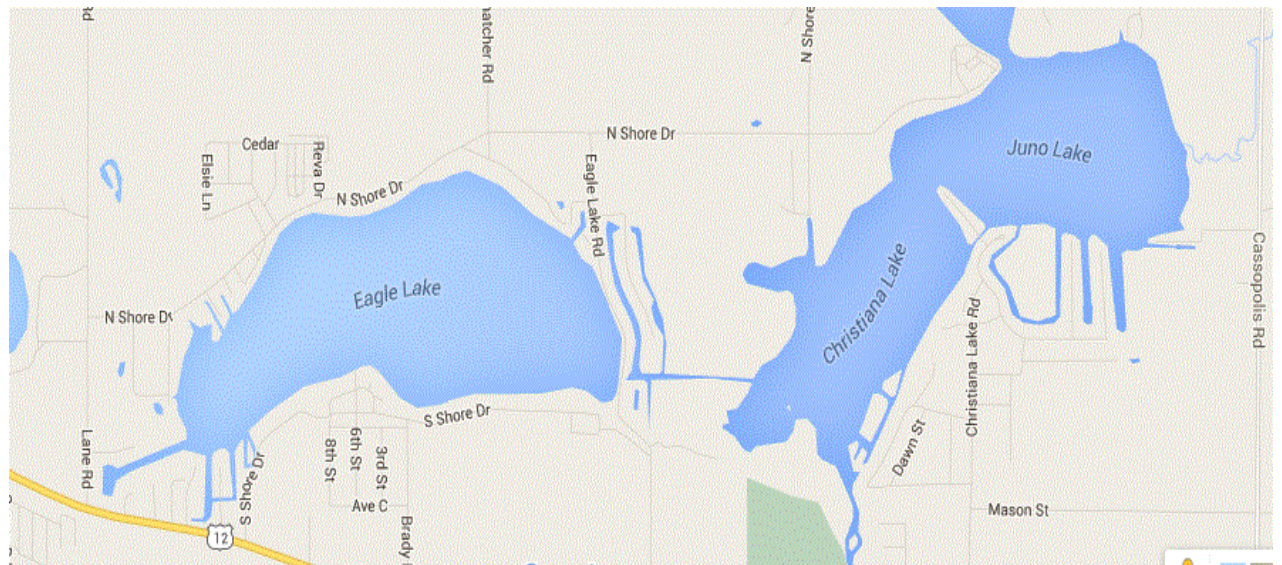
FINDING THE FUNDS

What We Will Explore Together...

- ✓ **Use the Eagle Lake Experience as a Real World Example**
 - ✓ **Issues to Consider with PA 188(SAD) / Lk Boards**
 - ✓ **Local Government Funds**
 - ✓ **Current DNR Property P.I.L.T. / Assessments / MNRTF**
 - ✓ **MI Aquatic Invasive Species State Management Plan (SMP)**
 - ✓ **Potential Concepts for the Future.....**
 - ✓ **Bonus Learning Point !!!**
 - ✓ **Q & A**
-



Eagle Lake - Ontwa Twp 379 – 399+ Acres





EAGLE LAKE – AIS THREATS

- **1st MI Lake with Zebra Mussels (1990-91)**
- **1st Group of Lakes with EWM AIS – 1990's, now Hybrid**
- **Curley Leaf Pond Weed AIS – 2012 (CLMP Exotic Plant Watch)**
- **Starry Stonewort AIS – 2015 (CLMP Exotic Plant Watch)**
- **60 Miles from Hydrilla AIS– Lake Manitou IN (2006 EDRR)**



EAGLE LAKE – AIS FUNDING SOURCES

- **Pass-the-Hat at ELIA Meetings**
- **Put AIS Line Item on Dues Statement (Fair Share?)**
- **PA 188 Special Assessment District – Petition/5yrs**
- **“Renewal SAD” for 10 Years – BOT Initiated (\$23K to \$46K per year)**
- **No Local Gvmt Funding, Yet** (Paw Paw Village Example)



LOCAL MICHIGAN GOVERNMENTS

83..... Counties

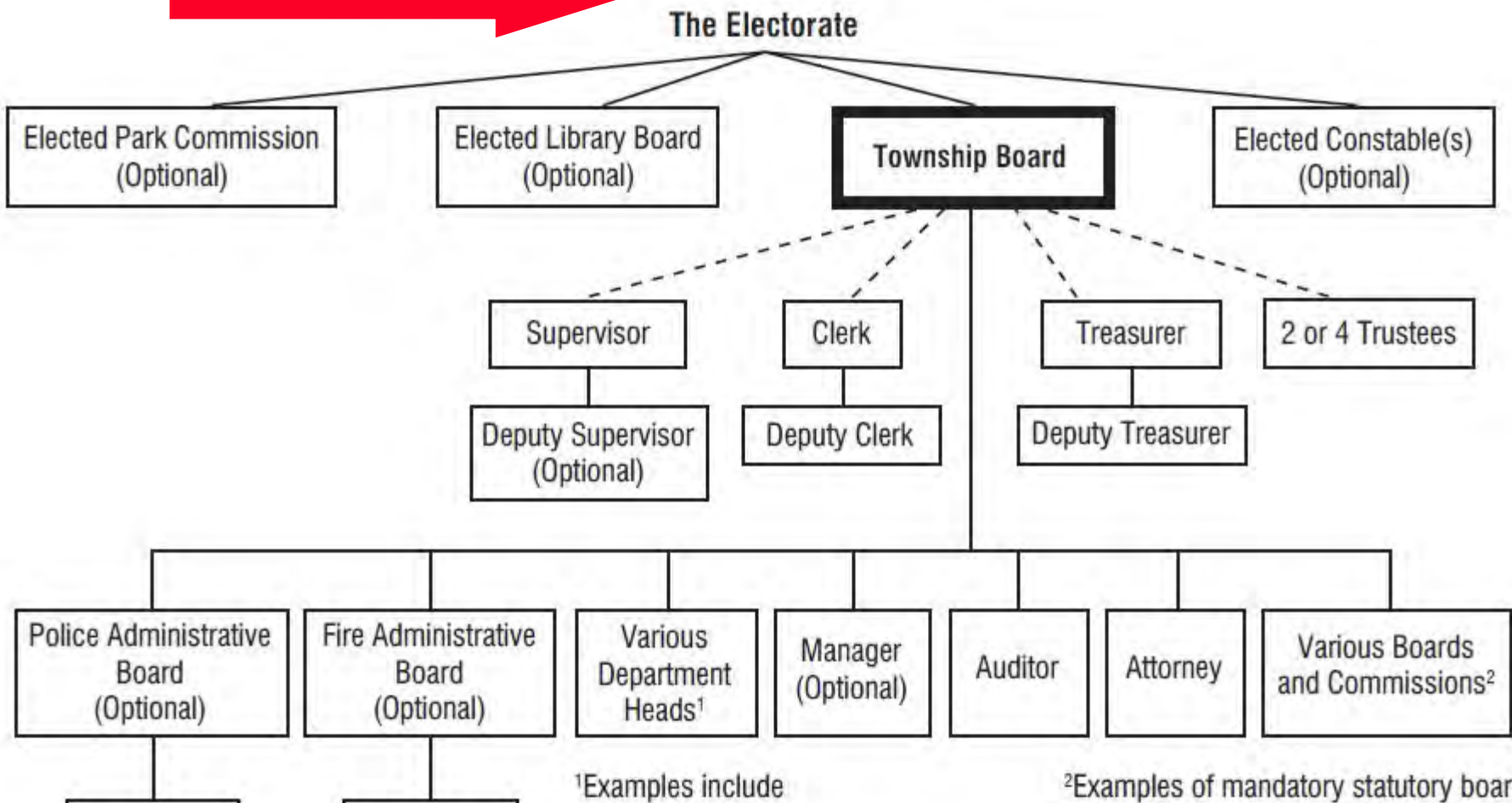
533.....Cities/Villages

1,240... Townships

**1,856 Units of Government for Local
Planning/Zoning & Possible Funding**

Typical Organization Chart General Law Township

Township Law (Recodified), R.S. of 1846
MCL 41.1, *et seq.*



¹Examples include

²Examples of mandatory statutory boards



STATE FUNDING SOURCES

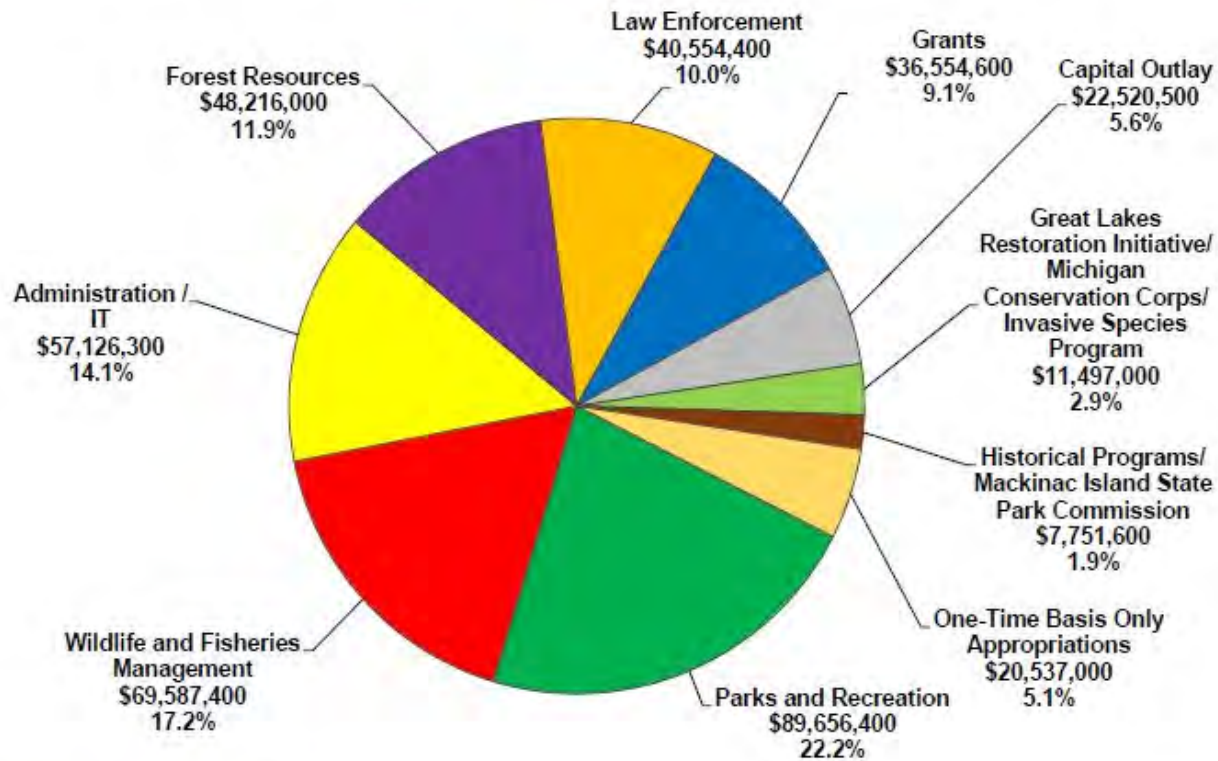
- **DNR Property** Payments in Lieu of Taxes (P.I.L.T.) / Assessments / MNRTF
- **DNR Annual Budget** – Fishing License, Parks
- **Waterways Commission** – Watercraft Registrations & Fuel Tax
- **General Fund Appropriations** – Support the “**Blue Economy**”



Michigan Inland Lakes Convention

DNR Appropriations

FY 2015-16 Gross = \$404,001,200



Finding Funds to Deal with AIS



Michigan Inland Lakes Convention

https://www.michigan.gov/deq/0,4561,7-135-3313_71151_71481_8314-276823--,00.html

**Michigan's
Aquatic Invasive Species
State Management Plan 2013 Update**

Prevention, Detection, and Management in Michigan Waters

**A Cooperative Effort of the
Michigan Department of Environmental Quality
Michigan Department of Natural Resources
Michigan Department of Agriculture and Rural Development
Michigan Department of Transportation**

In Consultation and Partnership with Other Interested Parties

**Coordinated by:
Water Resources Division
Michigan Department of Environmental Quality
P.O. Box 30458
Lansing, Michigan 48909-7958
517-335-4176**

Approved by the Aquatic Nuisance Species Task Force on June 17, 2013

Finding Funds to Deal with AIS



FROM the AIS SMP.....

...Once these species become well-established within a water body, they are often difficult or impossible to completely eradicate. The financial burden of the management and control of aquatic invasive plants in Michigan inland lakes is placed largely upon the riparian landowners... (Pg15)

...With restrictions in the use of Waterways Funds and the level of current staffing to maintain these sites, the MDNR is looking at other options for preventing and limiting the dispersal of AIS. While state efforts towards preventing AIS dispersal at launch facilities are limited, many nonprofit organizations have been available to provide boat washing stations or AIS control. (Pg30)



GOING FORWARD.... Possible Action Steps

- **Read the SMP, Share the SMP, Influence the Updates to the SMP, Work the SMP**
- **Follow the **\$ Money \$** - Work for Changes in the Annual DNR, Waterways Commission, MNRTF, and General Fund Budgets. (MLSA, MWA, Local Lake Associations. Be a “MUCC”?)**
- **Set Objectives: e.g., For Every Lake with a BAS, the DNR pays one (1) SAD unit for each parking space**



Michigan Inland Lakes Convention

Questions / Comments ?

Finding Funds to Deal with AIS