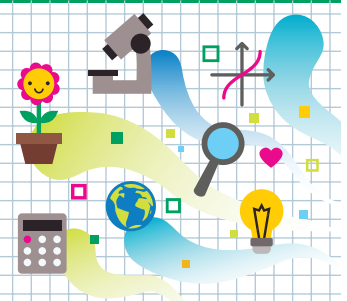




# HEADS IN, HEARTS IN

## Dissecting a Seed

### Instructions for Set-Up



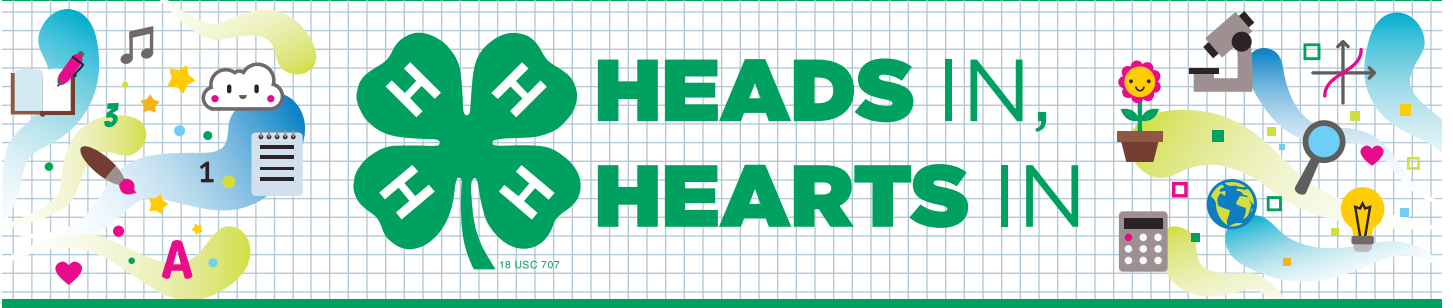
### Supplies

- ☐ “Guide for Families” handout
- ☐ “Parts of the Seed” handout
- ☐ 2 clear plastic standup displays (optional)
- ☐ 2–3 bags of lima beans
- ☐ Large bowl
- ☐ Water
- ☐ Several small magnifying glasses
- ☐ Display table

### Activity Preparation

- ▶ Purchase or locate items on supply list.
- ▶ Print one copy of the “Guide for Families” handout. Laminate or place in a clear plastic standup display to allow participants to see it more readily.
- ▶ Print out “Parts of the Seed” handout. Laminate or place in a clear plastic standup display to allow participants to see it more readily.
- ▶ Soak lima beans in a large bowl of water for 24 hours to soften.
- ▶ Set up the display table and arrange needed supplies.





# Dissecting a Seed

## Guide for Families

### Learning Objectives

#### What you need to know:

Every seed has three parts:

- ▶ The **hilum**, or **seed coat**, helps protect what is inside. Seed coats can be thin or thick.
- ▶ The **cotyledon** is the **food** for the seed so it can begin to grow.
- ▶ The **embryo**, or **baby root**, is the part of the seed that will sprout into a new plant.

#### What you will do and learn:

You will investigate the lima bean seed and identify the three parts.

### Instructions

1. Pick out a lima bean.
2. Gently peel away the **hilum** or **seed coat**.
3. Gently split your lima bean into two halves.
4. See if you can find the parts of the seed.
5. Use the magnifying glass to get a closer look.

# Dissecting a Seed

## Parts of the Seed Handout

