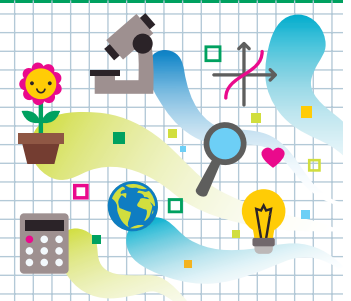




HEADS IN, HEARTS IN

Pollinate a Flower

Instructions for Set-Up



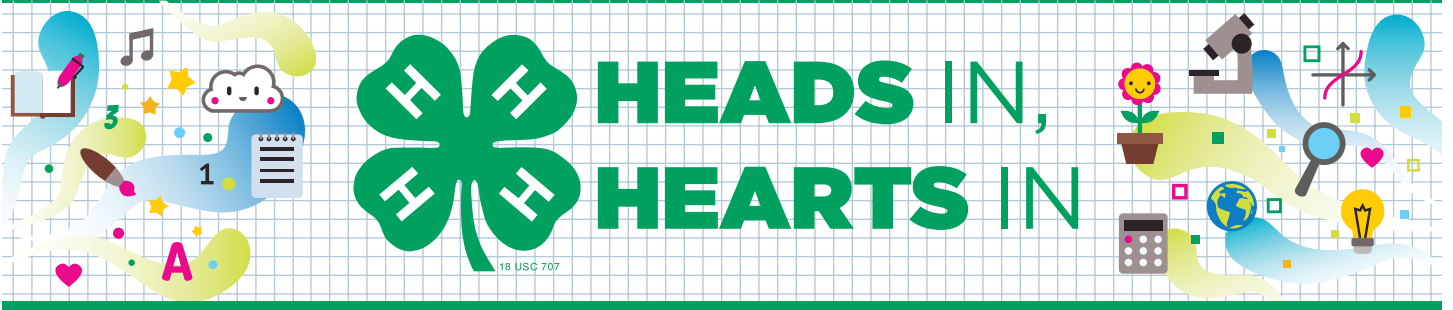
Supplies

- ☐ “Guide for Families” handout
- ☐ Clear plastic standup display (optional)
- ☐ Stapler
- ☐ Staples
- ☐ Coffee filter (1 per participant)
- ☐ Paper (1 piece per participant)
- ☐ Crayons
- ☐ 1 large bag of cheese puffs
- ☐ Bowl to hold cheese puffs
- ☐ Wet wipes to clean fingers
- ☐ Display table

Activity Preparation

- Purchase or locate items on the supply list.
- Print one copy of the “Guide for Families” handout. Laminate or place in a clear plastic standup display to allow participants to see it more readily.
- Set up the display table with the supplies.





Pollinate a Flower

Guide for Families

Learning Objectives

What you need to know:

Pollination is the process that involves the transfer of **pollen** from the male part (**stamen**) of a plant to the female part (**carpel**) of the plant.

Through pollination, a plant can bear fruit and seeds. Birds and mammals eat the seeds, and they are taken to new locations through their droppings. When the environment is right, the seeds can start growing and making new plants or flowers.

What you will do and learn:

You will gain an understanding of how pollination in flowers works.

Instructions

1. Staple a coffee filter to the top of a piece of paper. The coffee filter represents the head of a flower.
2. Use the crayons to draw the stem, leaves and roots of the plant.
3. Touch the cheese puffs in the bowl with your fingers. The bowl represents a flower. The cheese that sticks to your fingers represents pollen.
4. Wipe the cheese (pollen) onto the coffee filter (flower). This completes the process of pollination and allows a plant to make new fruit or seeds.