

Home

Current season reports

Pest management

Weather/Climate

Economics

Maturity/Storage

Pollination

Rootstocks

Horticultural practices

Varieties

Contacts

Presentations

Links

European red mite - *Panonychus ulmi* (Koch)

[Home](#) > [Pest management](#) > [mites](#) > European red mite

European red mite (ERM) eggs begin hatching at tight cluster stage of bud development and are found on leaves or bark the rest of the year.

Monitoring and thresholds: see [twospotted spider mite](#) information.



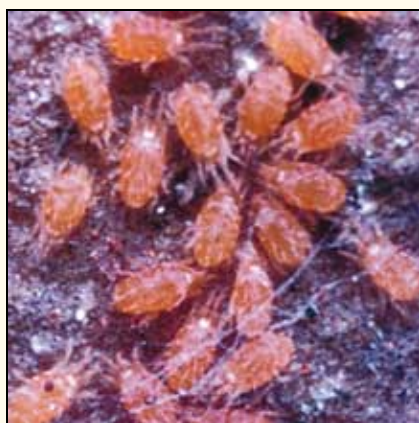
ERM overwinter as eggs on rough bark. The eggs are most commonly found near buds, fruit spurs, and in the fork of two branches.



The female ERM is red or brownish-red with conspicuous white spots at the bases of their white bristles.



The adult male is smaller than the female, has a tapered abdomen, and is reddish-yellow.



Immature ERM often feed in groups within unfolding leaves.

Additional information

- For more monitoring information and evaluation of available pesticides: [Michigan Fruit Management Guide](#)
- [A Practical Guide to Scouting Apple Orchards](#) – a DVD showing how to scout apple orchards.
- [MSU Diagnostic Services](#) for assistance in pest identification.
- [MSU Fruit Crop Advisory Team Alert](#) newsletters for current pest/crop conditions.

This information was developed from [A Pocket Guide for IPM Scouting in Michigan Apples](#) by David Epstein, Larry J. Gut and George W. Sundin. Purchase this in a pocket-sized guide for reference in the orchard from [MSU Extension](#) (publication E-2720).