

## Home

## Current season reports

## Pest management

## Weather/Climate

## Economics

## Maturity/Storage

## Pollination

## Rootstocks

## Horticultural practices

## Varieties

## Contacts

## Presentations

## Links

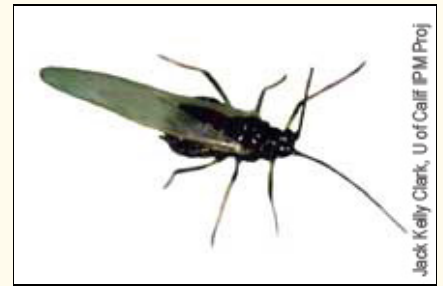
## Rosy apple aphid - *Dysaphis plantaginea* (Passerini)

[Home](#) > [Pest management](#) > [aphids](#) > [rosy apple aphid](#)

Rosy apple aphid (RAA) feeding curls leaves, deforms shoots, stunts and malforms fruit. Three generations of RAA occur on apple in Michigan. The first nymphs are present in the orchard when the trees are at 1/2 -inch green. Particularly susceptible varieties include Ida Red, Cortland, Rome, Rhode Island Greening, and Golden Delicious. Treatments for infestations must be made early before the aphids are protected inside curled leaves.



Curled leaves



Jack Kelly Clark, U of Calif IPM Proj

Winged adults are brownish-green to black (about 2 mm long). Unwinged adults are generally a purple-pink color with long cornicles.

**Monitoring:** Begin at tight cluster to pink stage. Examine 5 clusters from the upper inside canopy on 10-20 trees per block. One infested cluster/tree may indicate the need for treatment.

### Additional information

- For more monitoring information and evaluation of available pesticides: [Michigan Fruit Management Guide](#)
- [A Practical Guide to Scouting Apple Orchards](#) – a DVD showing how to scout apple orchards.
- [MSU Diagnostic Services](#) for assistance in pest identification.
- [MSU Fruit Crop Advisory Team Alert](#) newsletters for current pest/crop conditions.

This information was developed from [A Pocket Guide for IPM Scouting in Michigan Apples](#) by David Epstein, Larry J. Gut and George W. Sundin. Purchase this in a pocket-sized guide for reference in the orchard from [MSU Extension](#) (publication E-2720).

[Site map](#)

[About us](#)

[Copyright/linking/disclaimer](#)

09/22/08 Funding support: [Project GREEN](#), the [Michigan Apple Committee](#) and the [MSU IPM Program](#). Download [Adobe Acrobat Reader](#) to view pdf files.



Partial support from [NC-IPM Center](#).

Web developer: [J.N. Landis](#).