



Alcona County 2022 Annual Report



MESSAGE FROM THE DISTRICT DIRECTOR

Thank you for your support and partnership with Michigan State University Extension. MSU Extension helps to improve the lives of Michigan residents by providing educational programs for people of all ages that can address critical needs, issues, and opportunities. Our work is guided by our mission and our core values which are:

- **We will show up.** We will be engaged and serve our communities across the state.
- **We will help people thrive.** We will work to help everyone be their best and do their best.
- **We will be authentic.** We will be honest about what we can and cannot do, and we will be guided by evidence-based science.
- **We will welcome everyone.** We will be inclusive and respect everyone, while valuing differences and working to serve a wide audience.
- **We will manage resources responsibly.** We will be good stewards of our resources and funding from all sources.
- **We will take risks.** We are lifelong learners and value innovation to better serve Michigan communities.

These value statements summarize how we work to engage with communities and how we hope we are seen by the people we serve. The team we have assembled in District 4 to serve communities are outstanding professionals who care deeply and work hard to meet the needs of youth, adults, and families and for households, small businesses, and local governments. This report summarizes the numbers and some of the stories of how we have worked to connect people with one another and with information gained from research that can help improve lives.

Julia (Julie) Darnton, District Director

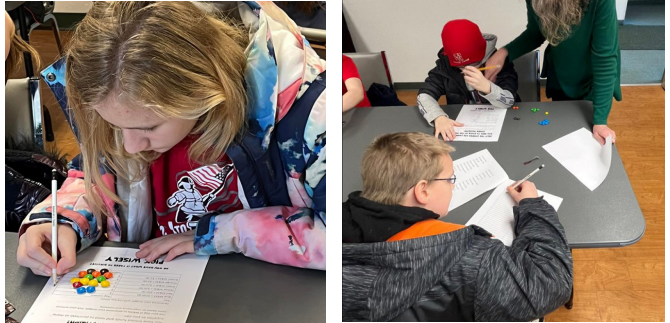
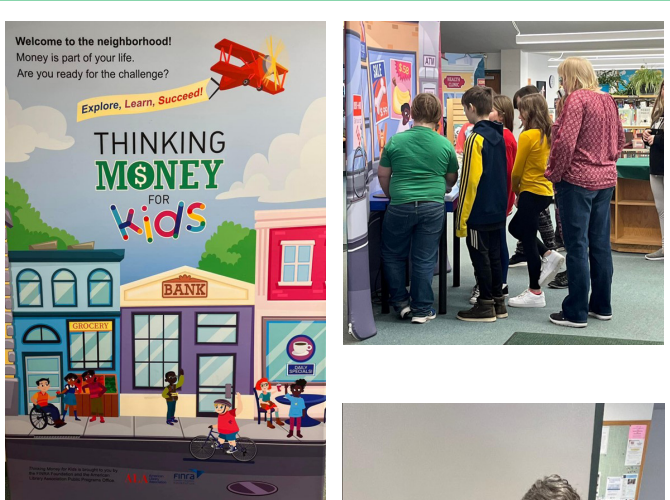
PROGRAM HIGHLIGHTS

CHILDREN & YOUTH

YOUTH DEVELOPMENT

Michigan 4-H is growing current and future leaders. The largest youth development organization in Michigan, 4-H provides thousands of young people with experiential learning opportunities to explore new interests and discover their passion. In 2022, **1,773** Alcona County youth participated in **51** programs.

Students of all ages from Alcona Community Schools engaged in place-based learning through **29 science literacy programs** and learned about natural resources stewardship, rockets, Michigan's inland waterways, watersheds and the Great Lakes, engineering, gardening and pollinators, biology, and environmental science.



In partnership with the Alcona County Library and Alpena Alcona Area Credit Union, **234** students from Alcona Community Schools grades 1-5 learned about making change, budgeting, saving for a goal, spending, and learning about future careers through interactive displays.



Congratulations to 2022's 4-H Council Scholarship recipient, Cecelia Spears!



AGRICULTURE & AGRIBUSINESS

Michigan ranks second in the nation in crop diversity due to its unique climate, topography and impact of the Great Lakes. Agriculture is now one of the fastest growing sectors of the Michigan economy. In 2022, **213** Alcona County residents participated in programming related to animal agriculture, consumer horticulture, agribusiness, and production of field crops, fruit crops, and vegetables.

ASK EXTENSION

Through the Ask Extension system, Michigan residents can ask questions and receive expert answers quickly on a broad range of subjects through an [online](#) form. In 2022, experts answered 6,023 questions and **52** of those questions were asked by residents of Alcona County.



PROGRAM HIGHLIGHTS

HEALTH & NUTRITION

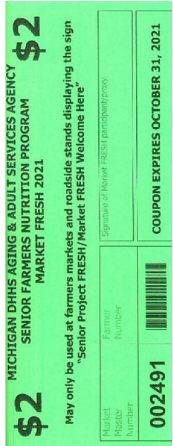
MSU Extension partners with the Michigan Department of Health and Human Services to provide SNAP-Ed, a nutrition education program designed to reduce hunger and food insecurity and promote healthy eating habits for people who are eligible for food assistance programs like the Supplemental Nutrition Assistance Program (SNAP). MSU Extension SNAP-Ed community nutrition instructors teach youth, individuals, and families how to make health a priority. The goal of SNAP-Ed is to improve the likelihood that SNAP-eligible persons will make healthy food choices within a limited budget and choose physically active lifestyles consistent with the current Dietary Guidelines for Americans and the USDA food guidance. In 2022, **78 Alcona County residents** participated in SNAP-Ed programs, such as Cooking Matters and Cooking for One.

SUPPORTING STRONG COMMUNITIES

As a result of MSU Extension's social-emotional programming, **33** Alcona residents learned how to manage their anger, reduce stress, thrive as caregivers, practice mindfulness and strengthen their families' and communities' understanding of and response to mental health crises. Residents participated in **16** programs including Mental Health First Aid, RELAX, Tai Chi for Arthritis and Fall Prevention, and Mindful Mondays.

SENIOR PROJECT FRESH

Senior Project FRESH, which is part of the United States Department of Agriculture Farm Bill, is a program aimed at older adults, helping them incorporate more fresh fruit and vegetables in their diet. The program was created to benefit the restricted income senior and as a secondary benefit to the Michigan farmer. Senior Project FRESH provides participants free nutrition counseling and \$20 in coupons that can be exchanged for fresh fruits, vegetables, and other healthy snacks sold at local farmers markets and roadside stands **14** Alcona residents participated in Senior Project FRESH classes in 2022.



STEWARDSHIP OF NATURAL RESOURCES

As leadership partners of the Northeast Michigan Great Lakes Stewardship Initiative, MSU Extension and Michigan Sea Grant supported local schools in fielding place-based stewardship education projects. In 2022, **692 students and 26 teachers** from Alcona County were engaged in Great Lakes and natural resources stewardship programs.



MSU is an affirmative action, equal-opportunity employer. Michigan State University Extension programs and materials are open to all without regard to race, color, national origin, gender, gender identity, religion, age, height, weight, disability, political beliefs, sexual orientation, marital status, family status or veteran status.



IMPACT AT A GLANCE

3,009

TOTAL ALCONA COUNTY RESIDENTS PARTICIPATED IN MSU EXTENSION PROGRAMMING IN 2022



622

YOUTHS ENROLLED IN 4-H



31

PROGRAMS HOSTED IN
ALCONA COUNTY



52

ASK AN EXPERT CONTACTS



169

CAREER EXPLORATION &
WORKFORCE DEVELOPMENT
YOUTH PARTICIPANTS



138

ANIMAL AGRICULTURE
PROGRAM PARTICIPANTS



72

RESIDENTS SERVED BY
SNAP-ED



1,183

YOUTH SCIENCE LITERACY
PARTICIPANTS



71

CONSUMER HORTICULTURE
PROGRAM PARTICIPANTS



42

FOOD SAFETY PROGRAM
PARTICIPANTS



17

STUDENTS ENROLLED AT
MSU



730

SEA GRANT PROGRAM
PARTICIPANTS



107

COMMUNITY FOOD SYSTEMS
PROGRAM PARTICIPANTS

CONTACT US



320 S. State Street
Harrisville, MI 48740

989-724-6478

msue.alcona@msu.edu

msue.msu.edu/alcona

<https://www.facebook.com/Alcona4h>

Kelly VonFintel, County Support Staff,
kelly.vonfintel@affiliate.msu.edu

Tracy D'Augustino, Science Literacy Educator,
daugustt@msu.edu

Michelle Luttrell, Community Nutrition Instructor,
luttre15@msu.edu

Julie Darnton, District Director
810-922-6483, darntonj@msu.edu