



Michigan 4-H Alumni College Access Project

2017 results



MICHIGAN STATE
UNIVERSITY

Extension

Did you know?



Michigan 4-H alumni are more likely to enroll in college on time than their peers

61%



Michigan 4-H

56%



Other Michigan students

MSU is the

#1

college choice for MI 4-H alumni



Compared to other students,

2x

as many MI 4-H alumni enroll at MSU



40%

of MI 4-H alumni have earned a degree 6 years after high school

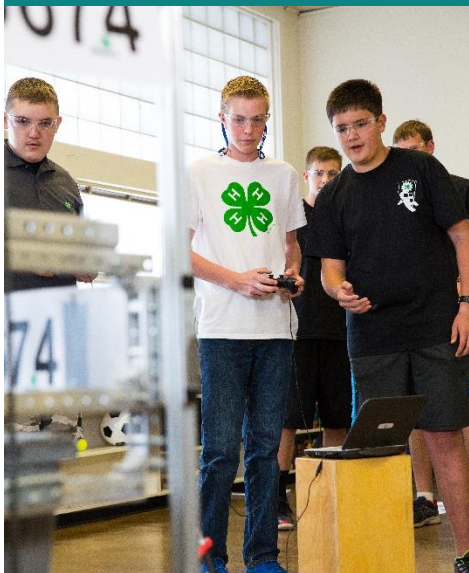


43%

of bachelor's degrees earned by MI 4-H alumni were in a STEM discipline



The Issue



As the need for a better-educated and skilled workforce becomes widely recognized, equipping young people with the skills needed to succeed in college has become a national focus.

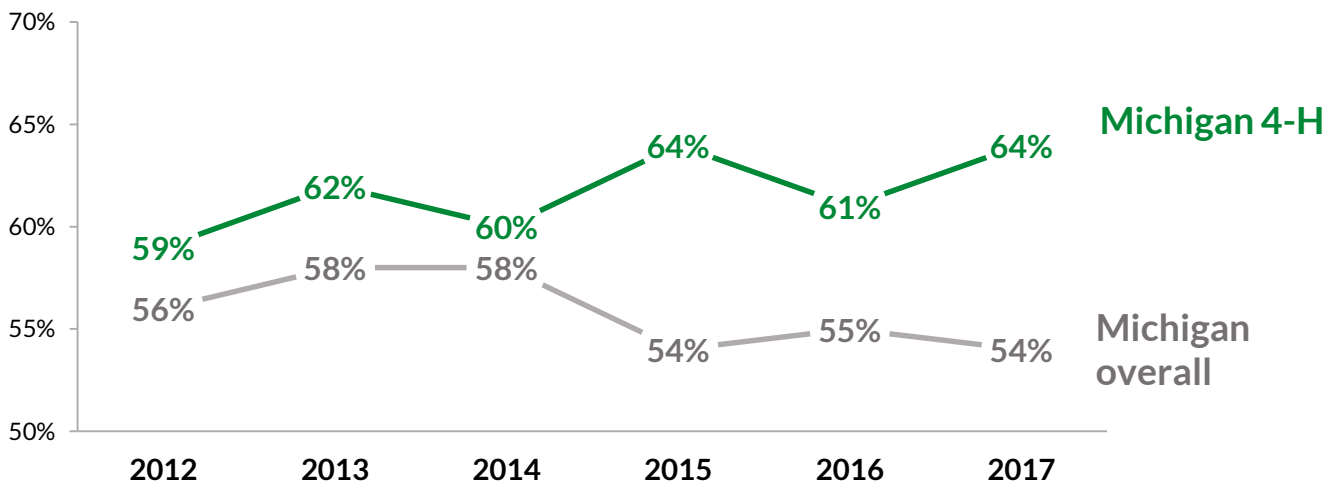
Michigan 4-H has several pre-college programs geared towards helping youth develop the social and academic skills they need for a successful transition to college. These programs all seek to increase participants' overall interest in college and to prepare youth for college by building the skills necessary for success.

The Michigan 4-H Alumni College Access Project tracks college enrollment and degree attainment by submitting records to the National Student Clearinghouse, a national enrollment and degree-attainment verification system.

The Results

Enrollment data show that **Michigan 4-H alums are more likely to enroll in college the fall after high school than other Michigan students**, a difference that is statistically significant. The figure below compares the most recent six years of data.

Michigan 4-H alums enroll in college on time at a higher rate than other Michigan students

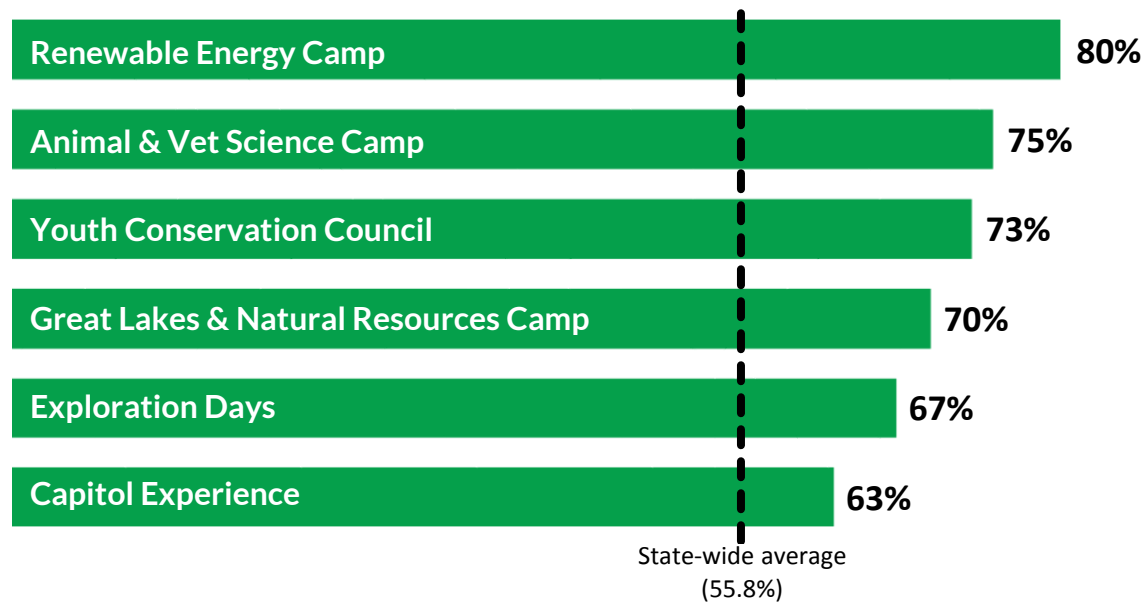


Since 2009, **61%** of Michigan 4-H youth have enrolled in college the fall after high school, a number that is significantly higher than the average Michigan student (56%). This is important, as research shows that youth who enroll in college “on time” are more likely to complete their degree on time.

Enrollment rates by program

When college enrollment rates are examined by program, we see that alums of all 4-H pre-college programs enroll in college at a higher rate than their peers.

Alums of all Michigan 4-H pre-college programs enroll in college at a higher rate than their peers



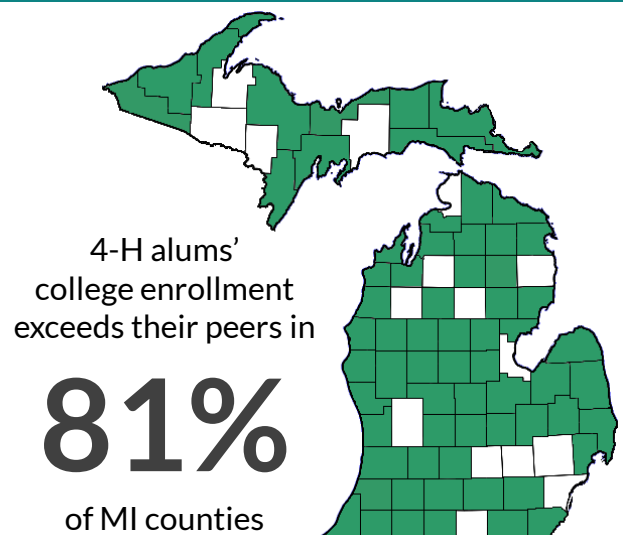
Note that some youth participate in multiple programs, so they are “counted” in both programs in the figure above. This is why the enrollment rates above may seem higher than the average enrollment rate of 61% reported on the previous page, as that number reflects the average enrollment rate across all programs with duplicates removed.

Enrollment rates by county

When college enrollment numbers are examined by county, enrollment data show that Michigan 4-H alums enroll in college at a higher rate than their peers in **81%** of Michigan counties.

In the graphic to the right, counties shaded in green represent areas in Michigan where 4-H alum's college enrollment exceeds their peers' college enrollment 6 months after high school.

For a further county-by-county breakdown, as well as summary statistics by district, see Appendix 1.



4-H alumni at MSU



Aside from increasing general interest in attending college, many participants in Michigan 4-H pre-college programs also become interested in specifically attending MSU.

In fact, **MSU is the #1 college choice for 4-H pre-college program alums.**

Twice as many Michigan 4-H alumni enroll at MSU

Michigan 4-H



10%

Other Michigan students



5%

From the 2016 – 2017 high school graduating class, 10% of Michigan 4-H alums enrolled at MSU, compared to 5% of Michigan students overall. That means that **twice as many Michigan 4-H alumni choose to enroll at MSU.**

“Coming in here, I was set on another college, but after seeing the gardens, trails, and all the buildings, I can see myself going here in the future. **MSU STOLE MY HEART!**”

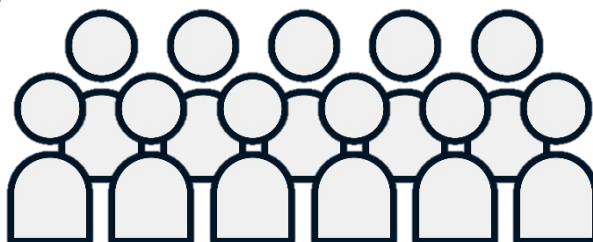
- Exploration Days participant

“Sunday morning I woke up wanting to be an engineer, and now **I want to be a politician that graduates from MSU!**”

- Capitol Experience participant

“The amount of passion for the career I want to pursue has been increased dramatically. **I am very excited and plan to attend MSU for veterinary medicine.** Go Green! Go White!”

- Animal & Vet Science Camp participant

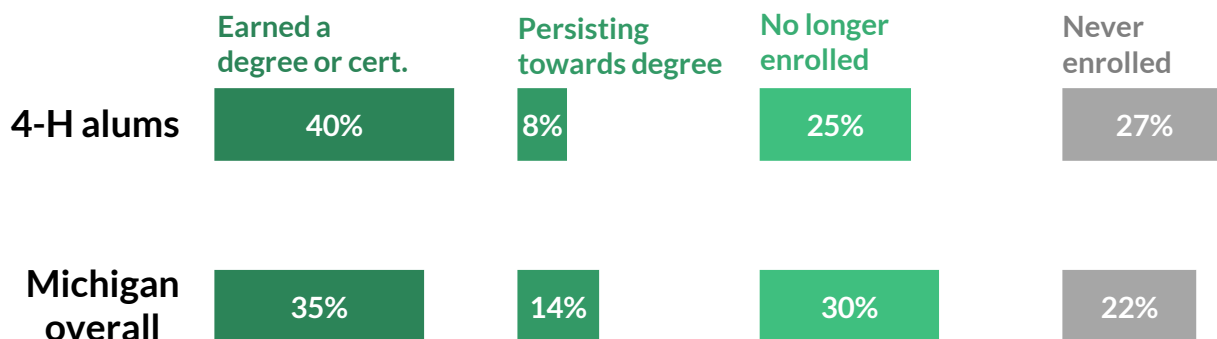




Graduation rates

Enrolling in post-secondary education unfortunately does not guarantee degree attainment, as many students who enroll in college drop out before earning a degree. Knowing that 4-H alums enroll in college at a higher rate than their peers is important, but knowing whether they complete their degrees is even more noteworthy.

Michigan 4-H alums are more likely to earn a degree or certificate 6 years after high school



Michigan 4-H alums are more likely than their same-age peers to have earned a college degree 6 years after high school. Relatedly, 4-H alums are also slightly less likely to be still working towards their first degree or to no longer be enrolled in college.

When examining fields of study, enrollment data shows that **43% of Michigan 4-H'ers who earned a bachelor's degree studied a STEM discipline** (i.e., science, technology, engineering, and math), a rate that's 10% higher than the Michigan average of 33%.



Take home

Michigan 4-H pre-college programs build life skills that support students' access to and success in college. Michigan 4-H pre-college programs are uniquely suited to support youth in gaining the knowledge and skills that they need to be successful in college and beyond.

MICHIGAN STATE
UNIVERSITY | **Extension**

Written and prepared by:
Chelsea Hetherington, Ph.D.
Michigan State University Extension
hether13@msu.edu
(517) 432-7613

Sources:
MISchoolData.org
National Science Foundation
National Student Clearinghouse