



# Sensitive Areas Identification System

<http://sais.iwr.msu.edu/>

The Michigan Sensitive Areas Identification System (SAIS) is an online mapping and reporting tool that identifies and maps sensitive areas on farm fields. This online system can be used by producers to assist in identifying ecologically sensitive areas that may be prone to soil erosion by wind or water, leaching of nutrients, or other risk factors. After identifying potential resource concerns, users have the option to complete a brief questionnaire and generate a printable report with a summary of results and information to follow-up with NRCS. The goal of the system is to improve water quality by connecting producers with NRCS and conservation organizations to address sensitive areas through conservation treatments and available assistance programs. For more information, visit <http://sais.iwr.msu.edu/>.

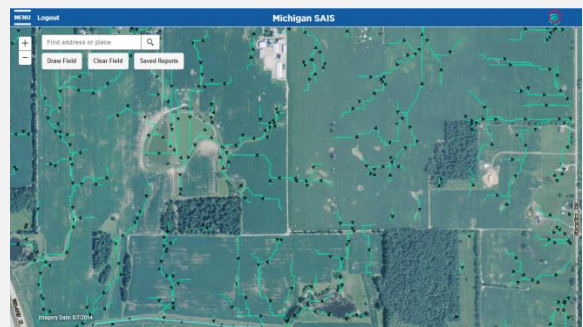
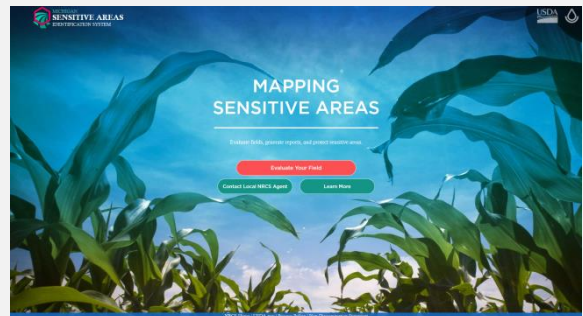


## System Uses

- Explore an interactive map with sensitive area data
- Answer a brief questionnaire to generate results from the Manure Application Risk Index and the Michigan Phosphorus Risk Assessment
- Print and save detailed reports that include summary of results, maps, and potential conservation treatments
- View nearby USDA Service Centers

## Featured Sensitive Areas

- Soil erosion by water
- Soil erosion by wind
- Concentrated flow
- Phosphorus runoff
- Manure runoff
- Nitrate leaching



## Acknowledgments

This material is based upon work supported by the Natural Resources Conservation Service, U.S. Department of Agriculture, under number 68-5D21-15-22. The system was developed by the Michigan State University Institute of Water Research in coordination with the USDA Natural Resources Conservation Service, Michigan Office and farmer input. Any opinions, findings, conclusions, or recommendations expressed in this publication are those of the author(s) and do not necessarily reflect the views of the U.S. Department of Agriculture.