

## Poison ivy

*Toxicodendron radicans* (L.) Ktze.

### Life cycle

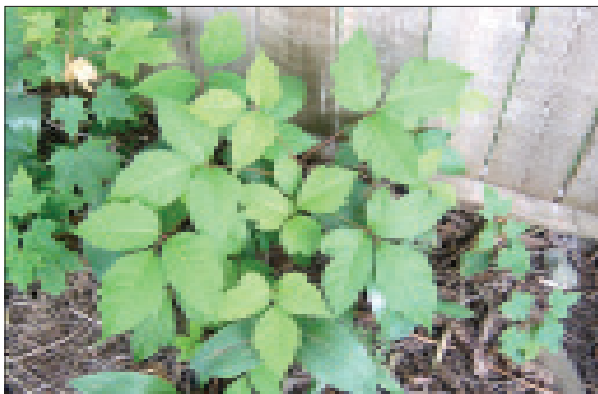
Perennial woody vine.

### Leaves

Alternate, compound with three shiny leaflets. Leaflet margins may be smooth, toothed or lobed. The side leaflets occur on very short stalks; the middle leaflet occurs on a much longer stalk. Leaves may turn bright red in the fall. Contact with any part of this plant can cause a reaction in sensitive people.

### Stems

Shrubby or climbing, woody vines are supported by aerial roots.



Poison ivy foliage.

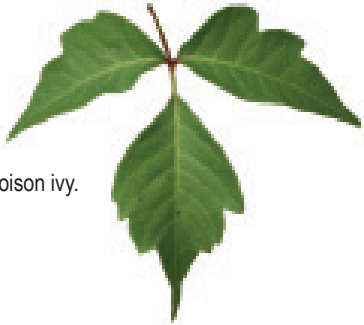
## Poison ivy *continued*

### Flowers and fruit

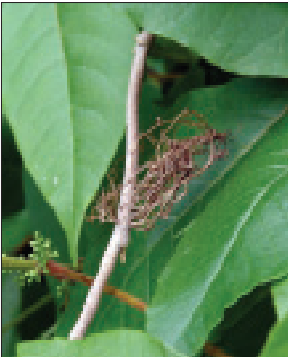
Small, inconspicuous, yellow to green flowers have five petals. Fruit are gray to white berries (drupes).

### Reproduction

Seeds, creeping roots and stems, which may root if in contact with the ground.



Compound leaf of poison ivy.



Poison ivy flower.