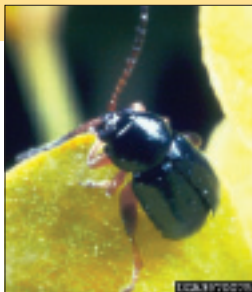


Chewing pests

Flea beetle

Adult flea beetles chew multiple small holes in leaves and flowers. They tend to feed in large groupings and possess enlarged hind legs that allow them to jump off plants when disturbed. Flea beetle larvae are located in the soil and feed on plant roots. Flea beetles overwinter as adults in weeds and plant debris.



Flea beetle adults are 1.5 mm long and vary in color from black to blue. ■ 1.5 mm



Management: Remove overwintering sites such as weeds and plant debris. Place a covering over plants until adults are no longer present. Contact insecticides may be useful in controlling adults.