

Fungal leaf spots

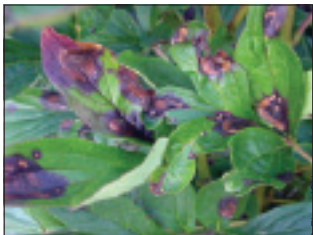
Red spot, measles

Pathogen: *Cladosporium paeoniae*.

Hosts: *Paeonia*.

Symptoms: Initial symptoms typically develop after bloom.

Small, reddish, circular spots form on the foliage. Lesions may coalesce, making blotchy patches. The upper surfaces of infected leaves become dark purple; the lower surface is brown. Foliage that is infected before it is fully expanded may become slightly distorted. Infection of stems causes reddish streaks.



P. Flynn, LSU

Spread: This fungus survives on dead plant debris and in soil. Spores are spread by rain or wind.

Management: Remove and destroy infected plant material. Avoid overhead irrigation or carefully time irrigation to limit the duration of leaf wetness.