

Common groundsel

Senecio vulgaris L.

Life cycle

Summer or winter annual capable of multiple generations per year.

Leaves

Alternate, sparsely hairy to smooth with variable leaf shape. Young leaf margins may be smooth to slightly wavy; older leaves have deep, irregular lobes and



Common groundsel seedling.

coarsely toothed margins. Lower leaves have short stalks; upper leaves are stalkless.

Stems

Smooth, erect and multiple-branched. Usually no taller than 12 inches.

Flowers and fruit

Numerous yellow, cylinder- to cone-shaped flower heads are produced in clusters at the stem ends. The seed is enclosed in a single-seeded, wind-disseminated fruit that forms in a white, approximately 0.5-inch-wide puffball collection.

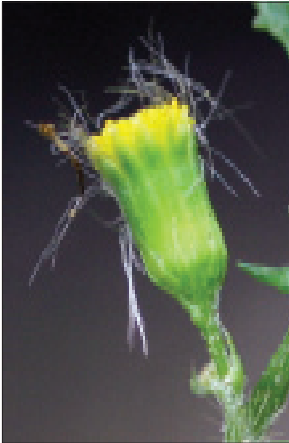
Reproduction

Seeds.

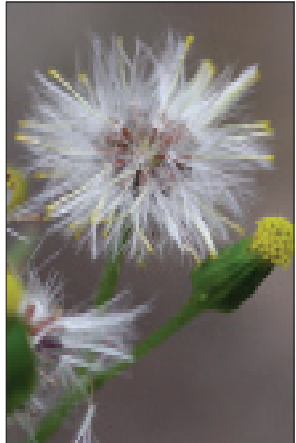
Common groundsel *continued*



Common groundsel plant.



Common groundsel flower head.



Mature seedhead of common groundsel.

Asteraceae (Aster family)