

[Back to identifying nursery weeds.](#)

Ivyleaf morningglory

Ipomoea hederacea (L.) Jacq.

Life cycle

Twining summer annual vine.

Leaves

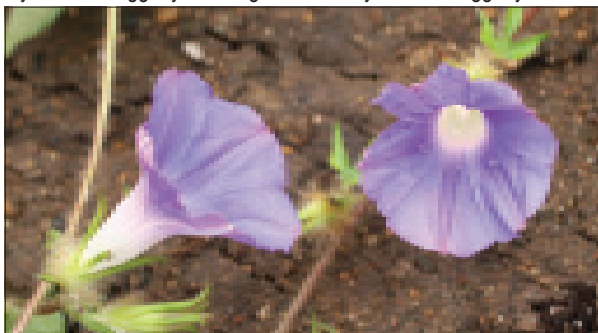
Cotyledons are butterfly-shaped and usually narrower at the base. Leaves are alternate with erect hairs on both surfaces. The first leaf may be unlobed; all other leaves are three-lobed and ivy-shaped.



Ivyleaf morningglory seedling.



Ivyleaf morningglory leaf.



Ivyleaf morningglory flowers.

Convolvulaceae (Morningglory family)

Ivyleaf morningglory *continued*

Stems

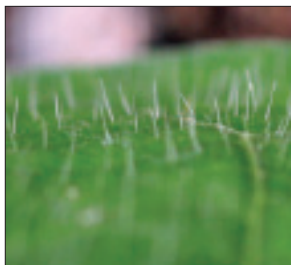
Densely hairy, climbing or trailing, twining vines up to 6 feet or more in length.

Flowers and fruit

Blue to purple or white petals fused into a funnel shape. Fruit are egg-shaped capsules containing dull gray, brown or black seeds with one round and two flattened surfaces.

Reproduction

Seeds.



Erect hairs of ivyleaf and entireleaf morningglory.

Similar weeds

Entireleaf morningglory

(*I. hederacea* var. *integriuscula* Gray)

Differs only from ivyleaf morningglory by having heart-shaped leaves. Leaf hairs are erect on both surfaces.

Pitted morningglory (*I. lacunosa* L.)

Differs by having V-shaped cotyledons and heart-shaped leaves with no to few hairs.

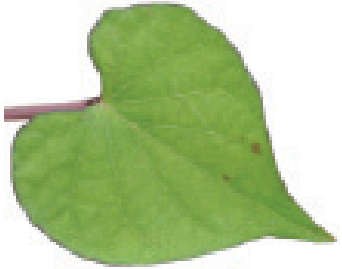
Tall morningglory [*I. purpurea* (L.) Roth]

Differs by having butterfly-shaped cotyledons with tip and base similar in width and heart-shaped leaves with dense hairs that lie flat.

Ivyleaf morningglory *continued*



Entireleaf morningglory leaf.



Pitted morningglory leaf.



Entireleaf morningglory seedling.



Pitted morningglory seedling.

Convolvulaceae (Morningglory family)