

*Kent County*

4-H Family News

April 2018

Hello Spring!

Can you believe it?!? The month of March has come and gone, and spring is officially in the air! And hopefully, so is the warmer weather. It is so great to see the last remnants of snow disappearing as we watch the color green begin to dominate the landscape. We are keeping our fingers crossed that this is a sign we will soon see some flowers and other vegetation. What did you do to celebrate the changing of the seasons?

As we welcome in the start of spring, we want to know: are you ready to pledge your hands to larger service? The month of April officially marks the kick-off of the annual 4-H True Leaders in Service Initiative. All month long, 4-H members, parents, and volunteers will have the opportunity to take part in the initiative, and devote a hand to serving their communities. On April 28th, the initiative will come to a close by celebrating the National Day of Service. For more details on the True Leaders in Service Initiative, check out page 3.

This month's edition of the Kent County 4-H Family News also contains important information about upcoming workshops and shows happening in Kent County. Be sure to check out information on the Showmanship Plus Workshop and the Rabbit & Cavy Show. We are also excited to once again be partnering with Tractor Supply Co. for the Paper Clover Campaign, of which, part of the donations for this opportunity will be used to support leadership opportunities for 4-H youth in Kent County.

Looking forward to all that the month of April has to offer! Please feel free to reach out to the 4-H team with any questions, concerns, or suggestions.

Sincerely,

Mary Newman & Nana Temple
4-H Program Coordinators, Kent
County



Michigan State University is an affirmative action/equal opportunity employer. Michigan State University Extension programs and materials are open to all without regard to race, color, national origin, gender, gender identity, religion, age, height, weight, disability, political beliefs, sexual orientation, marital status, family status or veteran status. Issued in furtherance of MSU Extension work, acts of May 8 and June 30, 1914, in cooperation with the U.S. Department of Agriculture. Jeffrey W. Dwyer, Director, MSU Extension, East Lansing, MI 48824. This information is for educational purposes only. Reference to commercial products or trade names does not imply endorsement by MSU Extension or bias against those not mentioned. The 4-H Name and Emblem have special protections from Congress, protected by code 18 USC 707.

Contact Us

Staff:

Mary Newman
& Nana Temple
4-H Program Coordinators

Address:

775 Ball Ave. NE
Grand Rapids, MI
49503

Phone:

616-632-7865

Email:

Mary:

newman65@anr.msu.edu
(616) 632-7870

Nana:

templedi@anr.msu.edu
(616) 632-7888

Kent County MSUE:

msue.kent@county.msu.edu
(616) 632-7865

Facebook Page:

Kent MSU Extension 4-H

Web Site:

[http://msue.anr.msu.edu/
county/info/kent](http://msue.anr.msu.edu/county/info/kent)

4-H Renewable Energy Camp



Explore Michigan State University's campus while learning about ideas, research and opportunities in the field of natural resources and agriculture energy during the 2018 Michigan 4-H Renewable Energy Camp.

Taking place July 23 to 27, participants will be lodged in Shaw Hall as they learn from company executives, interactive farm tours, discussions with MSU professors and more.

The camp is open to youth ages 13 to 19 and registration closes June 1. Register at msue.anr.msu.edu/events/4_h_renewable_energy_camp_2.

4-H Events and Workshops

April 14: 4-H Night at the MSU Observatory

Michigan State University Observatory, East Lansing
Engage in hands-on, space-related activities at this free event (weather permitting).
http://msue.anr.msu.edu/events/4_h_night_at_the_msu_observatory

April 14: State 4-H Goat Expo

Anthony Hall, Michigan State University, East Lansing
The State 4-H Goat Expo is designed for young people who are interested in live animal evaluation and in testing their knowledge of the goat (caprine) industry.
http://msue.anr.msu.edu/events/state_4_h_goat_expo

Norma Agnew Memorial 4-H Hairy Horse Show

Michigan State University Pavilion, East Lansing
This warm-up, no-placings horse show/clinic is the perfect opportunity to receive valuable feedback at the start of a new show season.
http://msue.anr.msu.edu/events/norma_agnew_memorial_4-h_hairy_horse_show

April 17: Pork Quality Assurance Workshop

Alma Public Library, Alma
This educational session will teach 4-H members about caring for their swine projects. Registration due April 15.
http://msue.anr.msu.edu/events/pork_quality_assurance_workshop_1

April 20: Starting and Sustaining a School Garden

Michigan State University Extension Tollgate Farm and Education Center, Novi
Learn the steps to design, build and maintain a school garden.
http://msue.anr.msu.edu/events/starting_and_sustaining_a_school_garden_tollgate_2016

April 20: Mad City Money—Budget Simulation for Teens

True Covenant Church, River Rouge
Participate in this two-hour, hands-on simulation to learn about money in the real world. Registration due April 15.
http://msue.anr.msu.edu/events/mad_city_money_budget_simulation_for_teens

April 27-29: Michigan 4-H Shooting Sports Adult & Teen Instructor's Certification

Kettunen Center, Tustin
Learn about Michigan 4-H shooting sports' mission, policy, risk management, and more to become certified to offer live-fire, on-range shooting and archery experiences. Register by April 8.
http://msue.anr.msu.edu/events/michigan_4_h_shooting_sports_adult_teen_instructors_certification_workshop

For the most up-to-date events listing, go to <http://4h.msue.msu.edu/events>.

STATEWIDE NEWS AREA

3

April kicks off 4-H True Leaders in Service activation



Throughout the month of April, Michigan 4-H members, parents and volunteers are encouraged to pledge their hands to larger service by taking part in the annual 4-H True Leaders in Service initiative. This nationwide endeavor will connect 4-H'ers with their community as they lend a helping hand to those in need. The month-long service activation will officially kick-off April 1 and will finish with the National 4-H Day of Service on Saturday, April 28.

Last year, nearly 7,000 youth and adults across the nation volunteered during the month of service, through nearly 400 registered projects. These individuals impacted approximately 65,000 people within their communities.

Make plans now to take part and host a service project of your own! There are a lot of great ways to get involved, from donation drives to neighborhood cleanups! Visit www.4-H.org/true-leaders-in-service to learn more, access a planning guide, and register your project.

Michigan 4-H Text, Talk, Revive Civility Challenge

Every day, 4-H'ers are rolling up their sleeves in service as they lead positive change that empowers their peers and their communities. 4-H members are not afraid of a challenge, and in fact, they are known to seek out challenges they can help solve with their knowledge, leadership skills and fierce resolve.

This April, Michigan 4-H members are challenged to take on one of the most significant and widespread problems currently facing our nation: incivility. 4-H members can help revive civility across the state by taking the Michigan 4-H Text, Talk, Revive Civility Challenge.

The challenge helps youth engage their families, peers and communities in conversation around civil dialogue while doing something they are already experts at: talking and texting! Taking part is just three simple steps: first, organize a group of three to five individuals and text CIVILITY to 89800. Next, with help from a series of text messages, have a one-hour conversation about civility to learn what it is, the importance of it, and how to incorporate it into everyday life. After learning about civility, take a picture of your group and post it on social media to keep the challenge going!

The Michigan 4-H Text, Talk, Revive Civility Challenge is part of MSU Extension's celebration of the True Leaders in Service initiative. To learn more about True Leaders in service or to register your civility conversation as a service project, visit www.4-H.org/true-leaders-in-service.



Exploration Days 2018:

There is still time to register for 4-H Exploration Days 2018! Exploration Days will be June 20-22 at Michigan State University's campus in East Lansing. Hurry! Sessions are filling up quickly.



If you are interested in attending Exploration Days 2018, please be sure to register by April 23. Contact Mary Newman for more information or to register at:

Newman65
@anr.msu.edu.

Or

(616) 632-7870

Attention Dog Club Members

~~~~~

#### **Spring Break Opportunity!**

Are you home for spring break and looking to get in some extra practice? If so, be sure to stop by Well-Mannered Dog on April 4th from 10am-12pm for open floor exercises. Cost is \$3 per family.

### Well-Mannered Dog

#### **Address:**

5949 Clay Ave SW,  
Grand Rapids, MI  
49548

**Contact Nana Temple  
for more information.**

templedi@anr.msu.edu  
(616) 632-7888



## 4-H County Shows & Workshops

|                                          |          |
|------------------------------------------|----------|
| Open Floor @ Well-Mannered Dog .....     | 04/04/18 |
| 4-H State Award Delegates Workshop ..... | 04/30/18 |
| Rabbit & Cavy Show .....                 | 06/03/18 |
| Showmanship PLUS Workshop .....          | 06/16/18 |

## Other County Events

|                                       |          |
|---------------------------------------|----------|
| Horse Committee Meeting .....         | 04/05/18 |
| 4-H Council Meeting .....             | 04/16/18 |
| Rabbit & Cavy Committee Meeting ..... | 04/19/18 |

### **4-H Council Updates**

Kent County 4-H Council met on March 19, at the MSU Extension office in Grand Rapids. At this meeting, the council discussed honoring the 2018 High School 4-H graduates at the Kent County Youth Fair. The council did this last year, and it went over very well. Please see the information about how to get your graduates information to us on page 5.

We are looking for new ways to raise funds. If you have any suggestions, please contact Mary Newman at [newman65@anr.msu.edu](mailto:newman65@anr.msu.edu). The council would like you to know that the next time you order with Amazon, be sure to shop with Amazon Smile using the following link: <https://smile.amazon.com/>. Once there, you can select Kent County 4-H council as a charity to donate to!

The council will also be working with the six 4-H State Awards Delegates to help them prepare for the Awards Event happening in June.

***If you would like to join us at the next Kent County 4-H Council meeting, it will be held on April 16 at 5:30pm.***



## Off to STATE!

Congratulations to six of Kent County's finest! Ivy, Ellie and Lena Stoller from Alto Active Achievers 4-H Club will be representing Kent County in the 4-H State Awards Group Award; Shannon Good will be representing us in the Senior Dairy Science Award; Haley Loehfelm is a State Award Delegate for Junior Healthy Lifestyles Award,; and Sydney Gladding is representing Kent County for the Senior Rabbit and Cavy Award.

All six girls have worked very hard to become 4-H State Award Delegates. They will have more work ahead of them as they prepare for the 4-H State Awards event at Exploration Days, June 20-22, at Michigan State University's campus. The Kent County 4-H Council will be holding a workshop to help them prepare.

If you get a chance, please congratulate these hard working girls on their accomplishments! They will do a great job of representing Kent County.

## Attention 2018 High School Graduates!

Are you a Kent County 4-H member who is about to graduate from high school? If so, we want to take the time to celebrate and recognize your achievements during fair! Please provide us with the following information:

- Name
- # of Years in 4-H
- Project(s)
- Favorite thing about 4-H/Fair
- What's next for you (college, military, trade school, work)
- A framed 8x10 photo of you. (Photo will be returned at the end of fair)

You may drop the picture and information off at the Kent County Youth Fair Office or the Kent County MSU Extension Office.

If there are questions, please contact Mary Newman at 616-632-7870

### Class of 2018

- Name \_\_\_\_\_
- 4-H Club Name: \_\_\_\_\_
- # of years in 4-H: \_\_\_\_\_
- Project(s): \_\_\_\_\_
- Favorite thing about 4-H/Fair: \_\_\_\_\_
- What's next for you (college/military/trade school/work): \_\_\_\_\_

## Help Wanted

### *Are you passionate about:*

- Singing?
- Choir?
- Music?

### *Do you love to:*

- Cook
- Bake
- Learn about nutrition?

We are looking for enthusiastic individuals excited about these areas, and who would be interested in forming or leading a 4-H club with these topics in mind. If interested, we would love to hear from you!

Please contact  
Mary Newman or  
Nana Temple, Kent  
County 4-H Program  
Coordinators:

Mary:  
[newman65@anr.msu.edu](mailto:newman65@anr.msu.edu)  
(616) 632-7870

Nana:  
[templedi@anr.msu.edu](mailto:templedi@anr.msu.edu)  
(616) 632-7888



# Kent County MSU Extension Showmanship PLUS! Workshop



For Beef, Sheep & Swine Exhibitors Ages 5-19

**Saturday, June 16, 2018**

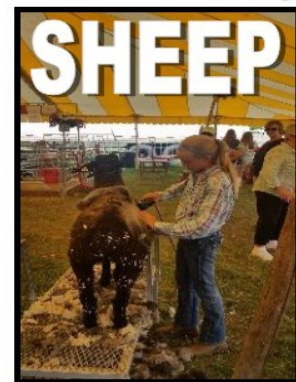
**Kent County Youth Fairgrounds**

Advanced Class: 9am-12pm

Beginner Class: 1pm-3pm



**Showmanship**  
**Grooming**  
**Clipping**



**Nutrition**



**Record Books**

**Zoonotics**

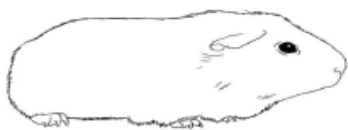
**Animal Welfare**

The Kent County MSU Extension is happy to offer this workshop with featured speakers for each division and topic, take home learning tools and door prizes! Cost is \$5 per participant and includes lunch from 12-1pm.

Please register by contacting Mary Newman at [newman65@anr.msu.edu](mailto:newman65@anr.msu.edu) by Friday, June 1. We will have room for 50 youth per species.







## Kent County 4-H Rabbit and Cavy Show

**Date:** Sunday June 3rd 2018

**Time:** Registration 7:00 am-8:30 am

Show begins at 9:00 am

**Where:** Kent County Youth Fairgrounds,  
225 South Hudson street, Lowell, 49331  
Dairy barn just inside the entrance gate

**New This Year:**  
**Costume Classes!**



### Entry Fees

- ◆ Breed classes \$3.00
- ◆ Pet Class \$1.00
- ◆ Fur/wool \$1.00
- ◆ Showmanship \$2.00



#### Showmanship—Rabbit and Cavy

( 4-H age as of Jan 1, 2018)

Explorers ~ 5-8 years participation awards

Novice ~ 9-11 years

Intermediate ~ 12-14 years

Senior ~ 15-19 years

Ribbons to 10th place

#### Breed Judging—Rabbit and Cavy

Awards for:

Rabbits:

BOB & BOS

Grand and Reserve ~

Meat pen/fryer/roaster/stewer

Best In Show & Reserve In Show

Cavies: BOB & BOS

Best In Show & Reserve In Show

Explorers ~ participation awards only

For more information contact: Jamie Lett [jamie.lett@yahoo.com](mailto:jamie.lett@yahoo.com)  
or Shelley Gladding [ssglad@charter.net](mailto:ssglad@charter.net)



### Paper Clover Campaign

*Calling all 4-H Clubs...*

We are looking for Kent County 4-H Clubs who would be interested in tabling or providing a small activity on site at one of the TSC locations during the Spring Paper Clover Campaign. This is a great opportunity for clubs to share with their community what they are working on, and to talk about 4-H.

If you or your club are interested in this opportunity please contact Mary Newman or Nana Temple, Kent County 4-H Program Coordinators .



## Spring Paper Clover Campaign

Tractor Supply Company (TSC) has graciously decided to once again partner with us for our Spring Paper Clover Campaign. This year's campaign dates will take place from *April 11-April 22, 2018*. TSC locations in Kent County include Cedar Springs, Comstock Park, and Lowell. Seventy percent of the donations received from this campaign will go directly to Kent County 4-H.



## Raise Your Hand Campaign

Are you a 4-H alumni? Between April 1 and May 15, Michigan 4-H is launching the Raise Your Hand Campaign. This campaign is calling on 4-H alumni to raise their hand and pay it forward for the next generation of 4-H'ers and to help bring the opportunities you enjoyed to additional youth throughout our state. Raising your hand could also help our state's 4-H program win up to \$20,000 to reach more kids and help them grow the skills they need to take on life's challenges.

Please raise your hand to help support 4-H in your community and give kids the hands-on learning experiences they need to succeed in life .

To sign up, please visit: [4-H.org/4HALumni](http://4-H.org/4HALumni)





### A Note from Our Newest 4-H Program Coordinator!

Kent County MSU Extension welcomes Diana “Nana” Temple as the newest Kent County 4-H Program Coordinator.

*“Hello All! My name is Nana Temple. I am just starting out my exciting new role as a 4-H Program Coordinator in Kent County. I graduated in June 2017 with my Bachelor’s degree from Kalamazoo College in Kalamazoo, Michigan. During my time there, I was involved in a variety of capacities with experiential learning, civic engagement, and service-learning programs related to youth in the Kalamazoo Community.*

*I am originally from the Greater Grand Rapids area, and am extremely excited to be back here working with Michigan State University Extension. I am ready to utilize my experiences and skillsets within the communities of Kent County, and I look forward to diving in with 4-H. During the upcoming months, I hope to get better acquainted with Kent County’s existing clubs and programming, and explore new opportunities.*

*When I am not fulfilling my role as the new program coordinator, chances are you might find me exploring new coffee shops and restaurants in the area, spending quality time with friends and family, or headed to Lake Michigan to relax on the beach.”*



Nana’s first day was March 1st. Her office is located at the Kent County MSU Extension Office: 775 Ball Ave. NE, Grand Rapids 49503. Feel free to contact her with any questions, concerns, or just to say hello: 616-632-7888, [templedi@anr.msu.edu](mailto:templedi@anr.msu.edu).

**Nana Temple, new 4-H Program Coordinator for Kent County.**

### Attention all 4-H Clubs!

Are you interested in getting to know your Kent County 4-H Program Coordinators a bit better?

We would love to join you at your next club meeting or event to get to know you all better and to see what you are working on.

Just let us know the date, time, and location for your meeting. Contact Mary Newman ([newman65@anr.msu.edu](mailto:newman65@anr.msu.edu)) or Nana Temple ([templedi@anr.msu.edu](mailto:templedi@anr.msu.edu)) to set something up!

I pledge...

my **head** to clearer thinking,  
my **heart** to greater loyalty,  
my **hands** to larger service, and  
my **health** to better living for  
my **club**, my **community**,  
my **country**, and my **world**.





# 4-H Family News

## Congratulations!

A huge congratulations to Abby Tichelaar, Ben Kotz, and Olivia DeJonge who represented Kent County at the State 4-H Horse Judging Competition on March 25, 2018 at Michigan State University. Coached by Jessica Kamp and Marlana Barkow, the results from the competition are as follows:

**Abby Tichelaar:** Placed 2nd in Junior Regular Individual Reasons & placed 1st in Junior Regular Individual Overall. She also was the recipient for the Norma Agnew Memorial Award.

**Ben Kortz:** Placed 4th in the Senior Novice Individual Reasons & 1st Place in the Senior Novice Individual Overall.

**Olivia DeJonge:** Placed 2nd in Senior Novice Individual Reasons.

**Congratulations to you all on your hard work and accomplishments!**



**Pictured (Left to Right): Abby Tichelaar, Ben Kotz, & Olivia DeJonge at the State 4-H Horse Judging Competition at MSU.**

## 4-H Day at Michigan's Adventure!

Attention 4-H members, parents, and volunteer:

Come celebrate 4-H Day at Michigan's Adventure on June 9th, 2018. Admission cost is \$25.00 per person with unlimited use of the amusement park. A meal ticket is also available for an additional \$7.00 each.

Reservations must be made by June 4, 2018. Please contact the Group Sales Office directly at (231) 766-9959 or at [youth-sales@miadventure.com](mailto:youth-sales@miadventure.com).



Michigan State University is an affirmative action/equal opportunity employer. Michigan State University Extension programs and materials are open to all without regard to race, color, national origin, gender, gender identity, religion, age, height, weight, disability, political beliefs, sexual orientation, marital status, family status or veteran status. Issued in furtherance of MSU Extension work, acts of May 8 and June 30, 1914, in cooperation with the U.S. Department of Agriculture. Jeffrey W. Dwyer, Director, MSU Extension, East Lansing, MI 48824. This information is for educational purposes only. Reference to commercial products or trade names does not imply endorsement by MSU Extension or bias against those not mentioned. The 4-H Name and Emblem have special protections from Congress, protected by code 18 USC 707.