

LENAWEE COUNTY 2022 ANNUAL REPORT

We're excited to share the Lenawee County 2022 Annual Report with you! For more than 100 years, Michigan State University (MSU) Extension has been helping people address critical issues, needs and opportunities by delivering the vast knowledge and resources of MSU directly to individuals, communities and businesses. To do this, we focus on four program areas: preparing

Michigan's children and youth for the future, improving health and nutrition for Michigan residents, enhancing agriculture and agribusiness, and leveraging natural and human assets. In 2022, our staff worked with Lenawee County residents, leaders and partners to create a diverse set of programs designed to help people and communities across all aspects of

their lives. We work to keep Lenawee County businesses and communities strong, encourage balanced use of our natural resources and help individuals and families secure a better financial future. Read on for information about the difference being made in Lenawee County.

Want more frequent updates about future programs and impacts? Sign up [here](#) to receive our monthly Report to Our Partners e-newsletter.



MSU Extension Lenawee
1040 S. Winter St., Suite 2020
Adrian, MI 49221

Phone: 517-264-5300
Email: msue.lenawee@county.msu.edu

Website: [MSU Extension Lenawee County](#)

Follow us on social media:

[MSU Extension—Lenawee County](#)

Helping people improve their lives through an educational process that applies knowledge to critical issues, needs and opportunities.



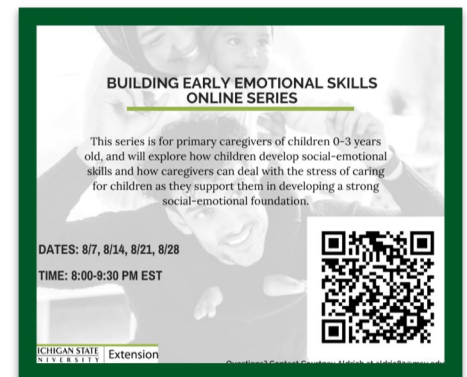


PREPARING CHILDREN & YOUTH FOR THE FUTURE



Parents and caregivers are the first to have influence on a child's development and future academic success. To ensure the success of families across Michigan and to support children's school readiness, MSU Extension has invested in research- and evidence-based programming for the parents, caregivers and early childhood educators who have the first opportunity to enhance children's skills and become their best resources and advocates.

This programming supports families while helping parents and caregivers increase early childhood science, math and preliteracy skills, as well as enhancing the social and emotional wellness of children and youth. By increasing parents' and caregivers' knowledge of child and youth development, MSU Extension is able to help caring adults build a positive foundation for learning and lifelong success.



1759
YOUTH
PARTICIPANTS

\$67,416
4-H VOLUNTEER
HOUR VALUE

187
YOUTH
PROGRAMS
ACCESSED BY
RESIDENTS

387
MI STRONGER
FAMILY
PARTICIPANTS



Model Rockets Workshop

Many people think 4-H is just for kids who live on farms or those interested in raising and selling animals – but that's not true! Offering a diverse range of topics and interest areas, 4-H is the largest youth development organization in Michigan. In fact, each year thousands of young people explore what interests and excites them as they grow through Michigan 4-H. From

program areas ranging from science and technology to clothing and textiles, and so much more, 4-H provides fun, educational opportunities that empower young people with skills to lead for a lifetime and become the foundation for future success. After all, true leaders aren't born: they're grown!



IMPROVING HEALTH & NUTRITION

When it comes to [nutrition](#) and [physical activity](#), MSU Extension's team of experts brings evidence-based education into communities across the state. Our staff delivers educational programming to communities and helps create lasting healthy changes, from kitchen tables to school cafeterias. Programming is supported through the [Expanded Food and Nutrition Education Program](#) and the [Supplemental Nutrition Assistance Program—Education \(SNAP–Ed\)](#).



Programs and offerings include:

- **Cooking for One**
- [Cooking Matters](#)
- [Eat Healthy, Be Active](#)
- [My Way to Wellness](#)
- [Peak Health and Performance](#)
- [Show Me Nutrition](#)
- [Teen Cuisine](#)

Success!

A recent Facebook post showcased MSU Extension! The post was made by a parent, in reference to her daughter's participation in not only the cooking class at school, but also her exposure to nutrition and meal planning from our lessons at home. "I love that our daughter wants to be involved, or even do all of the meal planning and preparation at home. Her cooking class at school has inspired her, and it's great that they've brought back classes that teach life skills!" Finding what makes a student excited and inspired to feed themselves and their families in a healthy way is inspiring!

1110

SNAP-ED
PARTICIPANTS
HOSTED IN
COUNTY

1002

RESIDENTS
PARTICIPATED IN
HEALTH &
NUTRITION
PROGRAMS

1768

FOOD SAFETY
PROGRAMS
OFFERED

44

SERVSAFE
PARTICIPANTS

Safe and properly prepared food can prevent foodborne illness, thus reducing healthcare costs and improving overall health and well-being. Whether for food entrepreneurs, volunteers preparing food for the community, childcare providers or consumers interested in preserving

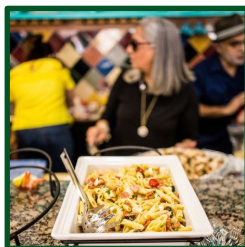


Photo: Pexels/Caleb Oquendo.

food, MSU Extension teaches a variety of classes to help everyone enjoy safe, healthy food. for keeping food safe.

MSU Extension offers high-quality, affordable programs that help Michigan residents learn the importance of safe food and water in their everyday lives.

Our research-based programs help food handlers learn safe food-preservation skills and techniques.

Programs include:

- [Cooking for Crowds](#).
- [Cottage Food Law](#)
- [Home Food Preservation](#)
- [Safe Food = Healthy Kids](#)
- [ServSafe](#)



ENHANCING AGRICULTURE & AGRIBUSINESS

MSU Extension educators in the Agriculture and Agribusiness Institute work with farms of all sizes helping to positively impact individual farming operations. When those individual operations do well, their success helps to fuel state and local economies.

Farm Stress Management

Taking care of crops and animals is hard on farmers. Caring for personal health and wellness in this high-stress profession is often overlooked but is as critical as caring for the farm business. Agricultural professionals and their families face unique stressors and mental health challenges and often have limited access to mental health services. MSU Extension is a national leader in addressing farm stress and related mental health issues by providing farm business financial analysis to farms, connecting farmers

and their families with teletherapy programs, workshops, webinars and digital materials offering self-paced or interactive options.

https://www.canr.msu.edu/managing_farm_stress/index

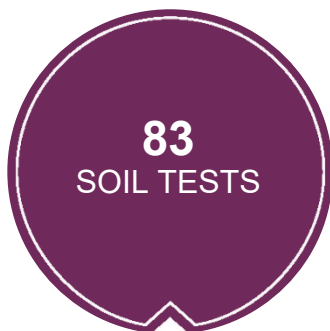


Photo credit: MSU Ext webpage

MSU Extension's Emergency Response to Accidents Involving Livestock (ERAIL)

Programs focus on the safety of first responders and the public traveling Michigan roads and highways. ERAIL trains first responders, animal haulers and others how to properly respond when animals are involved in a traffic accident, provides access to equipment that will aid in the accident response and creates a network of trained responders throughout the state.

<https://www.canr.msu.edu/erail/index>

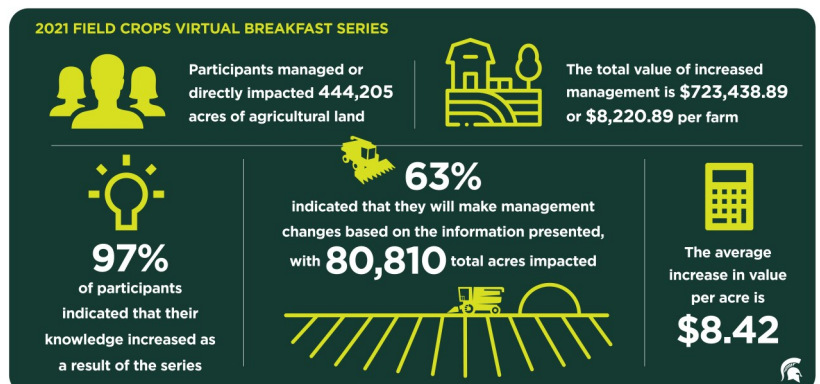


Field Crops Virtual Breakfast

Offerings like our Field Crops Virtual Breakfast meetings attract participants throughout the state, country and even the world. Every Thursday during the growing season, farmers can access timely, in-season crop and weather information from MSU Extension field crops specialists and educators. Each week features a topic followed by a weather summary and forecast. Topic areas are loosely established at the beginning of the series based on historical trends. However, the Virtual Breakfast series is flexible, fluid and able to adapt when issues arise due to

unforeseen growing conditions. Following the presentations, participants interact with specialists and educators in a question and answer period. This innovative approach using technology provides growers the opportunity to participate in a live webinar via their computer, laptop or cell phone. Each session is

recorded, closed-captioned and available for viewing [online](#).



FOSTERING STRONG COMMUNITIES

MSU Product Center

[MSU Extension](#) and the [MSU Product Center](#) assist entrepreneurs and businesses to develop products and services in the food and agriculture markets. Its team of experts consult with clients on a one-on-one basis, helping new entrepreneurs navigate from concept development to launch and beyond. The MSU Product Center also offers specialized

services such as labeling, packaging, and nutritional analysis. If you are interested in business counseling from the MSU Product Center, please visit the [website](#).

Product Center in Lenawee County

27 companies assisted
128 consulting sessions
22,000 in capital formation
289,400 in sales growth



MSU educators work with businesses, local governments, and communities to improve local economies and the lives of Michigan residents. MSU Extension educators also provide programming aimed at protecting and sustainably managing our state's natural resources.

Keeping businesses and communities strong:

- Good Governance
- Leadership
- Tourism Development
- Land Use & Placemaking

Making the most of our natural resources:

- Water Issues

- Forestry Education
- Habitat Inventory
- Environmental & Outdoor Education

Securing a better financial future:

- Financial Capability
- Homeownership Education
- Foreclosure Prevention


Supporting food systems and improving food access:

- Food Business Development
- Local Food & Food Access
- Food to Institution

Dollar Value of Community, Food & Environment Statewide Activities


\$830,513
Value of volunteer hours
(Independent Sector
@\$29.95 per hour).

\$30,115,124
Value of resources
leveraged by businesses.


\$4,716,499
Value of grants and resources leveraged
or generated by communities.



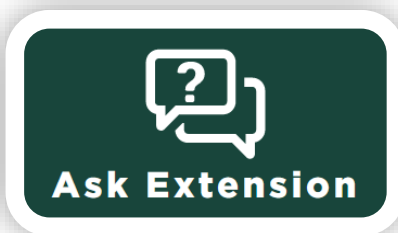
Lenawee County Staff

Name	Role	Phone	Email
Vanessa Armstrong	Community Nutrition Instructor	517-264-5312	armst393@msu.edu
Melissa Burns	Extension Coordinator	517-264-5315	mburns@msu.edu
Sheryl Moll	4-H Program Coordinator	517-264-5314	mollsher@msu.edu
Vickie Pfeifer	Community Nutrition Instructor	517-264-5303	pfeiferv@msu.edu
Matthew Shane	Associate Director, Field Operations	517-264-5308	shanemat@msu.edu
Amy Shovels	Nutrition and Physical Activity Instructional Design Educator	517-264-5310	shovels@msu.edu
Janelle Stewart	Extension Educator, Youth Development	517-264-5307	stewa191@msu.edu
Laura Van Etten	Assistant Extension Coordinator	517-264-5313	harr1325@msu.edu

A Statewide Network of Resources to Help You

MSU Extension is the home of the latest in research, education and outreach covering a wide range of issues from agriculture & agribusiness, health and nutrition, youth education and outreach and community and economic vitality. If MSU Extension doesn't have an expert in your county to answer your questions, we can connect you to our statewide resources to connect you to the information you need.

Ask Extension offers one-to-one answers from MSU Extension experts and Extension Master Gardener volunteers on topics such as lawns, gardening, agriculture, nutrition and physical activity, food safety, food preservation, natural resources, community development, youth programming and more! **Ask Extension:**
www.canr.msu.edu/outreach/ask-an-expert



Lawn and Garden Hotline: 888-678-3464 Hours: M,W,F 9:00 am–12:00 pm (Year round)

Crabgrass, brown spots, or powdery mildew, the Lawn and Garden Hotline can give you information on all your home gardening questions.

Food Safety Hotline: 877-643-9882 Hours M/W/F, 9:00 am-5:00 pm

Do you have questions about food expiration dates, how long food will last or preserving foods at home? The Michigan State University Extension food safety hotline can help answer these types of questions and concerns.

MSU Extension Bookstore <https://shop.msu.edu/collections/msu-extension-bookstore>

Look for bulletins, publications and MSU Extension products at the Bookstore!