



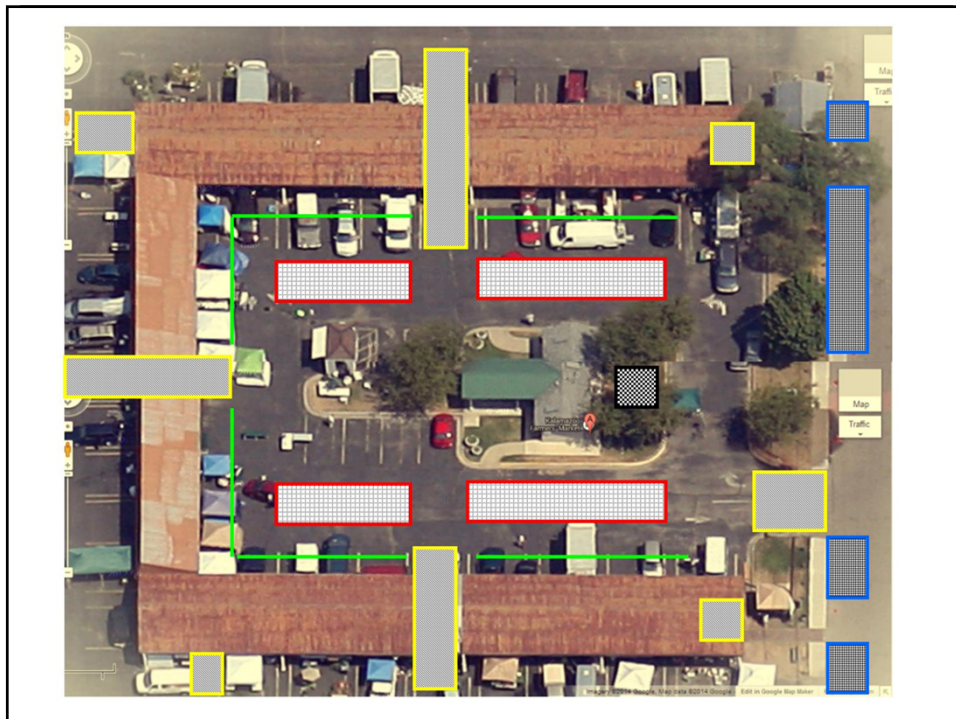
The purpose of the Kalamazoo Farmers' Market is to connect consumers to their sources of food and to support local food related businesses through a vibrant culture which instills community pride.

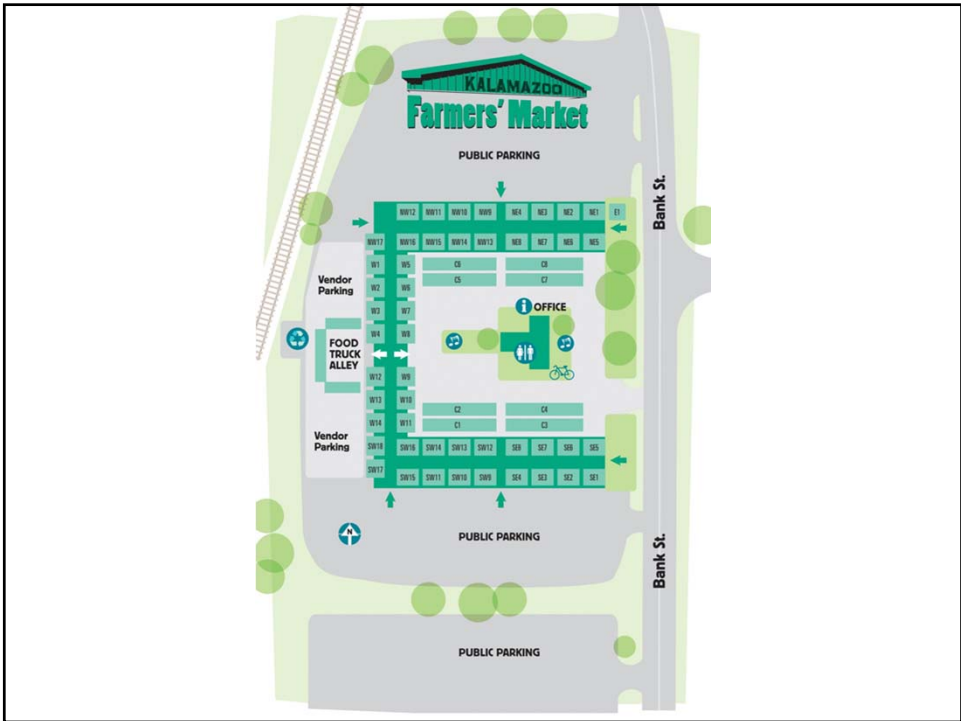
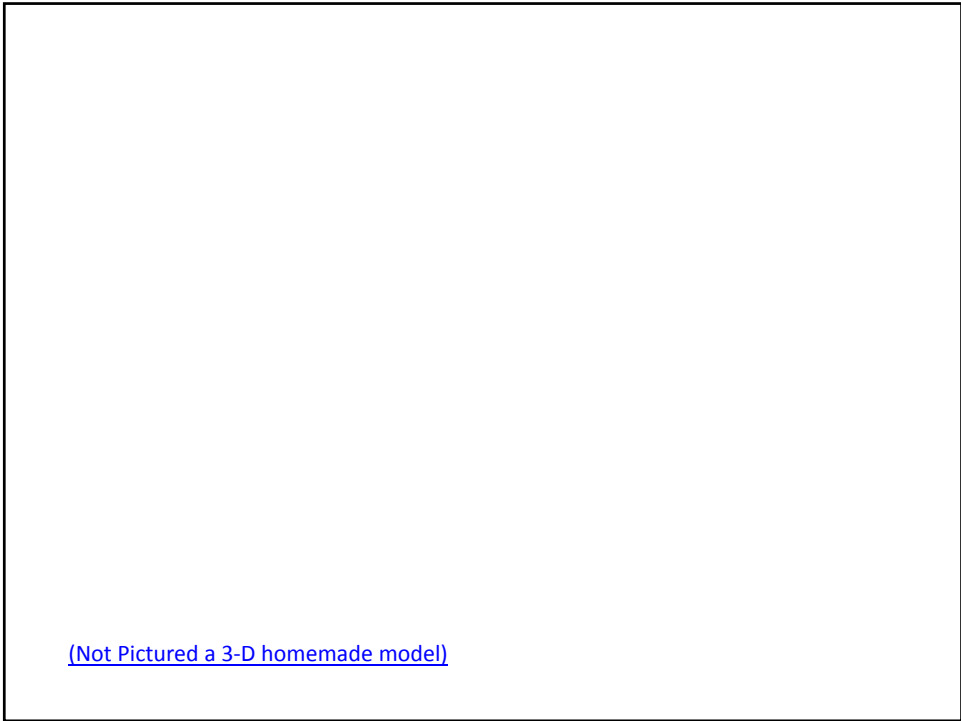
Fostering Relationships with a Culture of Transparency:



- Implementing a consistent signage program to start conversations...
- Encouraging customers to ask about their food sources...
- [Telling the story of our businesses](#)

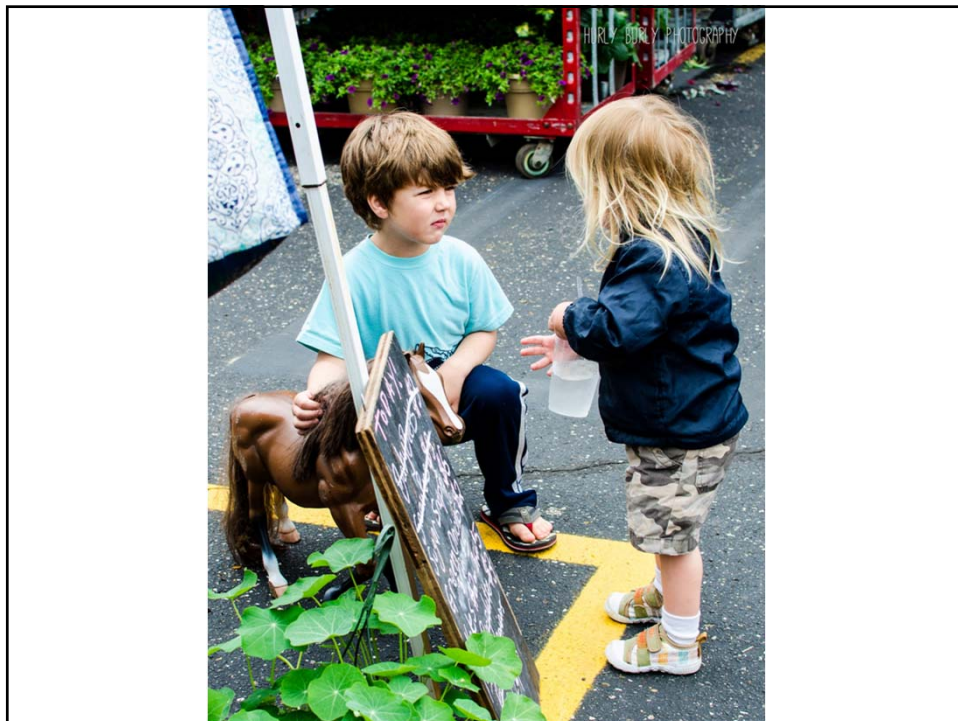
From Parking Lot to Pedestrian Square...



















Access created by our Vendors...

Fresh Food Fairy



Tabitha Farm





**KALAMAZOO
Farmers' Market**

Saturday • 7 a.m. to 2 p.m.
MAY through NOVEMBER

OPERATED BY
**people's
FOOD & CO-OP**
SINCE 1970

Tues. & Thurs. • 7 a.m. to 2 p.m.
JUNE through OCTOBER

peoplesfoodco-op.org farmersmarketkalamazoo.com

Chris Broadbent – Farmers' Market Manager
market@peoplesfoodco-op.org
269.342.5686 | 269.359.8309
Farmersmarketkalamazoo.com