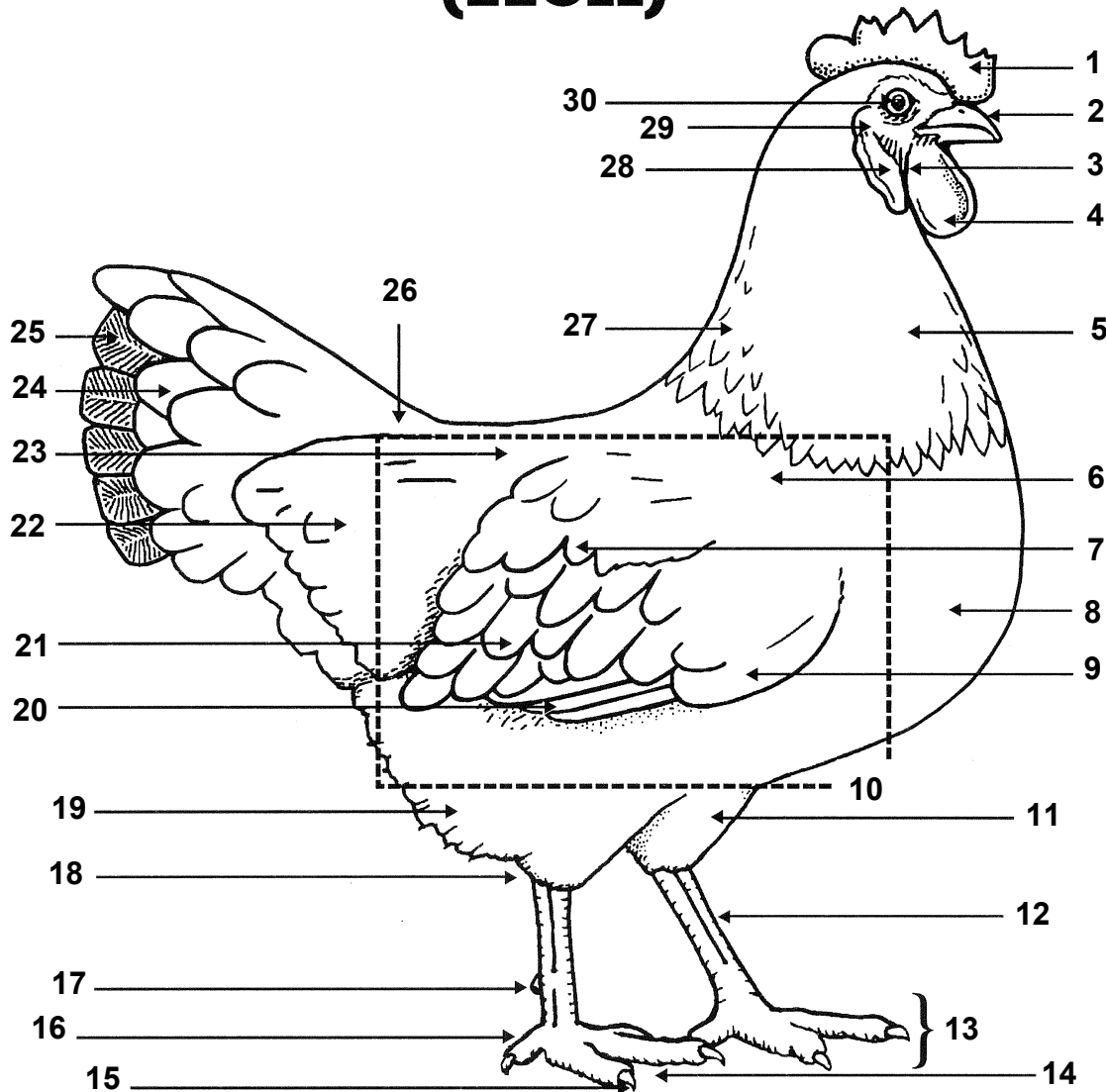


Parts of a Chicken (Hen)



Write in the number that corresponds to the correct part of the animal!

- | | | |
|--------------|------------------------|-------------------|
| ___ Back | ___ Fluff | ___ Sweep of Back |
| ___ Beak | ___ Foot | ___ Tail Coverts |
| ___ Body | ___ Hock | ___ Thigh |
| ___ Breast | ___ Main Tail | ___ Throat |
| ___ Cape | ___ Neck Feathers | ___ Toe |
| ___ Comb | ___ Primary Feathers | ___ Toe Nail |
| ___ Cushion | ___ Secondary Feathers | ___ Wattle |
| ___ Ear | ___ Shank | ___ Web |
| ___ Ear Lobe | ___ Shoulder | ___ Wing Bow |
| ___ Eye | ___ Spur | ___ Wing Coverts |