

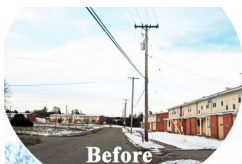
MARQUETTE AREA CLIMATE & HEALTH ADAPTATION ACTION GRANT

What is it?

The Marquette Area Climate & Health Adaptation Action (MACH A2) Grant is a pilot grant project designed to assist up to two Marquette County communities address health-related climate concerns. It offers a graphic visioning process that provides communities with a set of images and recommendations to guide adaptation improvements in their area that address climate and health. Projects completing the MACH A2 Grant process may also be eligible to apply for additional implementation funding. The MACH A2 Grant builds on more than a decade of success of the Sustainable Built Environment Initiative (SBEI) offered through Michigan State University (MSU) and provides a source directly for Marquette County communities for physical design assistance in climate and health adaptation.



Before/After Example: Lakeshore Drive, Marquette



Before/After Example: K.I. Sawyer Community



The Michigan Department of Health and Human Services (MDHHS) Michigan Climate and Health Adaptation Program (MICHAP), MSU Extension (MSUE) and the MSU School of Planning, Design and Construction (SPDC) have partnered since 2017 to advance climate and health adaptation in Marquette County. The partnership allows for an integrated approach to solving complex county-wide climate and health problems through the diverse expertise found within MICHAP and SPDC, including Public Health, Construction Management, Interior Design, Landscape Architecture and Urban & Regional Planning, along with MSUE's institutes and Extension educators.

Adaptation Grant Objectives

- Work with two communities to develop adaptation planning and design ideas for local climate and health issues and opportunities;
- Build consensus and generate ideas to address challenging climate and health concerns for specific areas;
- Act as a bridge between communities and consulting planning and design professionals; and
- Provide in-community student learning, and serve as a creative and scholarly outreach and engagement work endeavor involving campus faculty and field Extension educators.

Contacts

Wayne Beyea, Senior Specialist,
MSU School of Planning, Design, and Construction
beyea@msu.edu +1(517)432-7600

Brad Neumann, Senior Extension Educator
MSU Extension
neuman36@msu.edu +1(906)475-5731

Lorraine Cameron, Senior
Environmental Epidemiologist
Michigan Climate & Health
Adaptation Program
cameronl@michigan.gov

MICHAP

Michigan Climate & Health Adaptation Program
Michigan Department of Health and Human Services

MICHIGAN STATE UNIVERSITY | Extension

MICHIGAN STATE UNIVERSITY | School of Planning, Design and Construction

Project Types

The MACH A2 Grant seeks projects that integrate planning and design elements within a climate and health adaptation framework. Projects must explicitly relate to the climate, health (vector-borne disease awareness, air quality, emergency response/extreme events, and water related), and vulnerable population concerns and design and planning recommendations in the [Marquette Area Climate and Health Adaptation Project Guidebook Volumes](#). Projects might include regeneration (vacant land use, brownfields, placemaking), renewable energy (green development and building technology) and resiliency (economic shock, natural disasters) using the imaging/visioning umbrella of physical sustainable design. Examples could include downtown streetscapes, parks, bikeways and trails, open space systems, industrial/commercial reuse, beautification, land use, signs, agriculture/conservation land preservation, ecosystem management, and neighborhood/residential development. The scale of the project can vary from a single parcel to a neighborhood or commercial district. Projects that include a focus on climate-vulnerable groups within the community are preferred.

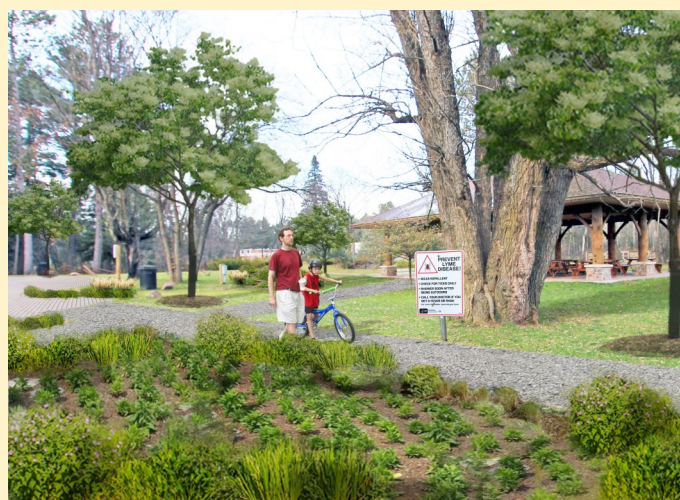
Who Qualifies?

Political jurisdictions in Marquette County can apply for MACH A2 Grant assistance. This may include townships and charter townships, as well as villages, cities and the County. Nonprofit organizations that serve Marquette County communities are also eligible. Projects must address each of the following selection criteria based on the [Marquette Area Climate and Health Adaptation Project Guidebook Volumes](#):

- Relationship to climate and health concerns (at least one of the following: vector-borne disease awareness, air quality, emergency response/extreme events, and water related)
- Design recommendations (Volume I) and policy recommendations (Volume II)
- Focus on climate-vulnerable groups within the community
- Broad-based community involvement and support; and
- Clear community objectives and quality of supporting materials (maps, data, etc.).



Before: Peter Nordeen Park, Gwinn



After: Educational signage, green infrastructure

How to Apply

Communities interested in receiving MACH A2 Grant assistance must complete an application package. Applications must be submitted by **October 18, 2019**. Complete the application form available for download on the SBEI website. Please note that **responses to short-answer questions 1-4 of the [application](#) must explicitly state how the project relates to the climate and health concerns and design and planning recommendations listed in the [Marquette Area Climate and Health Adaptation Project Volumes](#).**

Please visit <https://www.canr.msu.edu/climatehealthguide> to learn more about the Marquette Area Climate and Health Adaptation Project and to access the Guidebook Volumes or <https://www.canr.msu.edu/spdc/research-outreach/sbei> to learn more about MSU SBEI and apply.

Note: The \$7,500 local match required in the SBEI application is being covered by a grant from the Michigan Department of Health and Human Services.