

Southwest Michigan Field Crops Updates August 8, 2019

Here are updates from the MSU Extension Field Crops team in Southwest Michigan. If you have any items you would like me to include in future email updates—whether events you want others to know about or topics you would like to have addressed—please send me an email or call the office.

Homegrown Newspaper

For those who subscribe to the Sturgis Journal, the Coldwater Daily Reporter, or the Hillsdale Daily News may have noticed a weekly page that focuses on agriculture in the region. The spread is called Homegrown and is a joint effort between the editorial staff of those newspapers and MSU Extension. Dave Thompson, swine educator based in Coldwater, and I have been working with the editors to offer timely articles and calendar event postings related to crop and livestock topics as well as 4-H programs, home horticulture topics, and other ag-related issues. If you do subscribe to one of these, please take a moment to contact the respective editors and thank them for their commitment to the agricultural community. Also, if you have particular topics or events you would like to see highlighted in that weekly page, contact me, Dave, or the respective editors and let us know.

Industrial Hemp at MSU

I have been learning as much as I can about industrial hemp production this year to gain expertise on the MSU Extension field crops team. Notice I didn't use the term "expert" in that sentence. But I have been working with a group of MSU educators and specialists to produce educational materials and conduct some basic research on the crop. I have fielded two dozen questions via the "Ask an Expert" function on the MSU Extension website and (seemingly) countless other calls and emails since January. I have presented a "Hemp 101" talk at meetings and during a webinar ([recording available here](#)), and I worked with the Berrien Conservation District to host a meeting on industrial hemp production this spring. There is a steep learning curve for all of us in Michigan working with this crop this year, as you can imagine with a brand-new crop. For those who are interested in learning more about growing hemp, there are several good resources on [MSU's Hemp Production webpage](#): a bulletin, several articles, webinar presentations (more to be posted soon), and an FAQ. You can also browse the previously-answered questions on [eXtension's Ask an Expert](#) or type in a new question in the [Ask an Expert portal](#) on the MSU Extension

website. For those who live near St. Joseph County and are growing industrial hemp this year, let me know—I'm interested in learning from you all as well and visiting production fields.

WBC Trapping Report

Western bean cutworm (WBC) moth flights were greatly reduced in the region this past week. Purdue numbers from Week 6 were only 10% of those from Week 5 at many locations. Traps in western Branch County caught only 22 and 91 moths (130 and 240 the previous week) and the trap in SE Kalamazoo County only had 4 from July 30-August 5. This is good news for those with late-planted corn that is still in late-vegetative stages as the female moths look for corn that has just tasseled or is pre-tassel to lay eggs.

	6/20/19- 6/26/2019	6/27/19- 7/3/2019	7/4/19- 7/10/2019	7/11/19- 7/17/2019	7/18/19- 7/24/2019	7/25/19- 7/31/2019
Elkhart	1	2	28	118	184	5
Jasper	0	1	31	252	1152	142
Jasper	5	3	7	114	76	
Lake	0	1	4	10	32	12
Lake	0	1	12	16	189	15
Lake	1	0	0	19	140	36
LaPorte	4	1	40	45	555	57
Marshall	1	1	5	16	34	1
Marshall	0	0	8	105		
Porter	0	0	1	9	24	4
Pulaski	6	0	0	30	84	10
Pulaski	2	0	0	1	3	0
St. Joseph	0	0	2	41	9	
St. Joseph	0	0	5	10	47	19
Starke	0	0	1	21	11	8
Whitley	0	0	1	8	9	17
Whitley	0	0	2	11	11	1

Weather and Crop Update Update

Weather: Rainfall totals this past week for the area ranged from 0.06" in Albion to 1.3" in Benton Harbor with an average of 0.65". We received only 50-75% of normal precipitation in July. The rains that fell late Wednesday night were the last ones we'll likely see for a while as another week of cool and fair weather sets in until at least Tuesday next week. Current forecasts for our area call for ½" up to 1.25"

through next Thursday. The 6-10 day outlook is calling for cooler temps but those will give way to warmer than normal temps during the third week of August with normal to below-normal precipitation.

On this week's Virtual Breakfast webinar meeting, MSU's ag climatologist Jeff Andresen highlighted the [U2U website](#) where farmers can input a few pieces of information about their corn crop to get an estimate of when you can expect the crop to mature compared with historic first frost dates. Bruce MacKellar wrote [a recent article about the tool](#) that you can check out for more details. For example, the screenshots below show the difference in expected end-of-season scenarios for 108 and 90 day corn planted on June 1st. Assuming a normal GDD accumulation for the rest of the season, the 108 day does not make it to black layer by the typical first frost date (in this case, I set it to 28 °F for a hard frost, but you can set it to 32 °F) while the 90 day hybrid would unless the first frost is particularly early. The [SoyWater crop model](#) is also available for soybean, and Mike Staton mentioned that soybeans that have reached R7 are immune to damage from frost.

Field crops educator Bruce MacKellar reports that he and the Chilvers lab have found more fields in Allegan and Ottawa counties with tar spot. The drier weather this summer likely suppressed the disease, but fields—in particular those under irrigation—are now being found with higher numbers of lesions. Continue scouting corn fields that 1) had tar spot in the vicinity last year and 2) are irrigated.

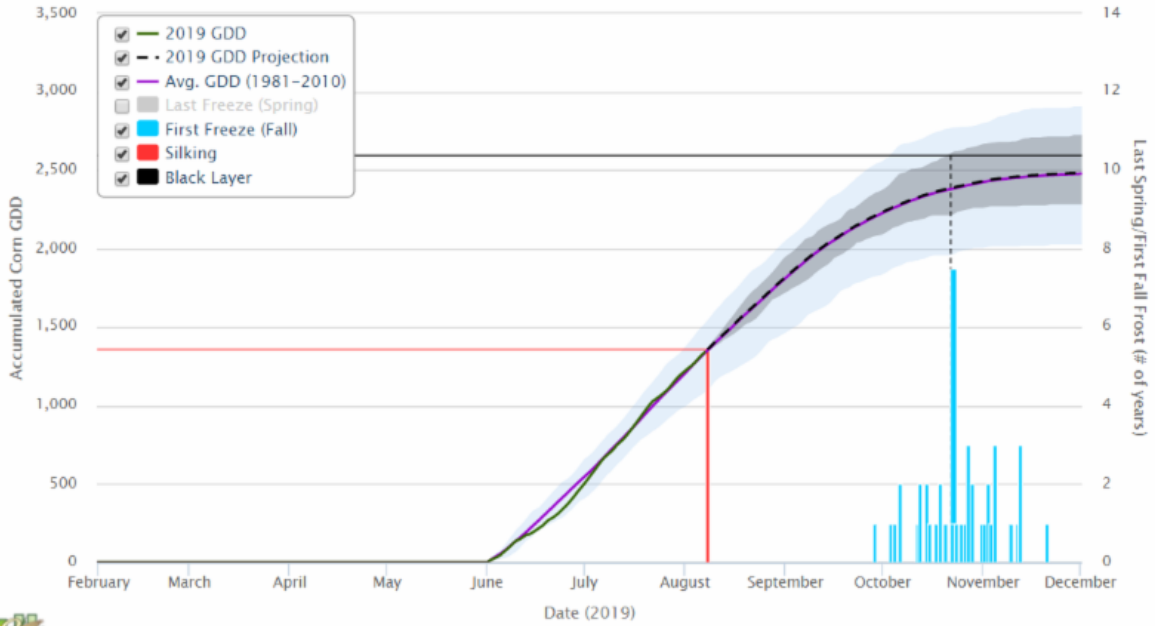
GDD Start: Comparison Years: Corn Maturity Days: Silking GDDs:

Freeze Temperature (°F): Variation: Current Day: Black Layer GDDs:

Corn Growing Degree Day Tool

Chart Options

Location: 41.92, -85.53 in St. Joseph Co., MI, Start Date: June 1, Maturity Days: 108, Freeze Temp: 28°F, Variation: All Years



GDD Base 50/86 (degrees F); Created: 08/08/2019

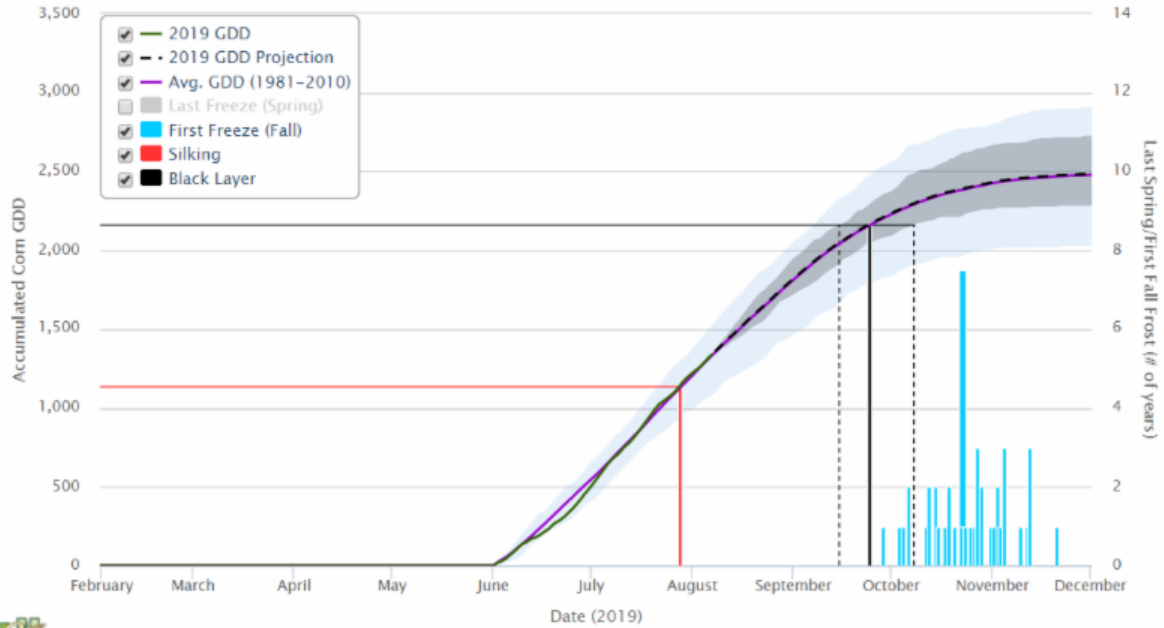
GDD Start: Comparison Years: Corn Maturity Days: Silking GDDs:

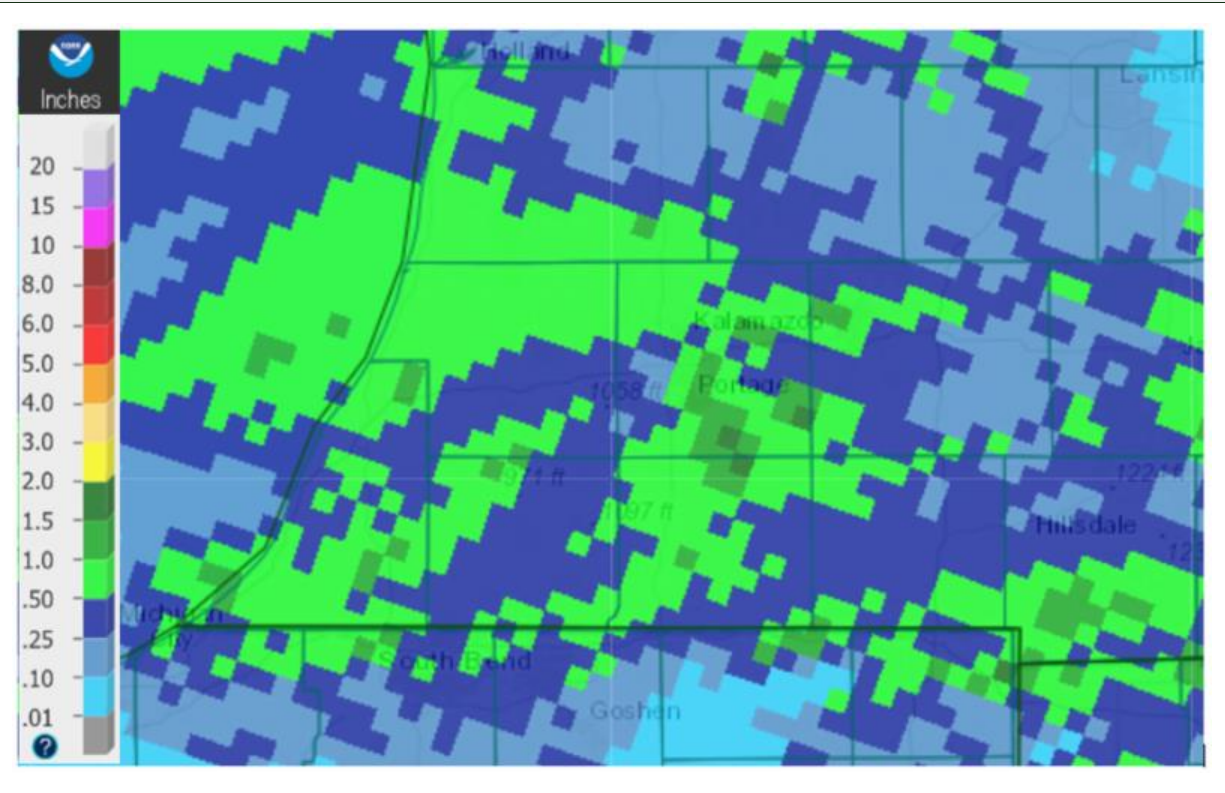
Freeze Temperature (°F): Variation: Current Day: Black Layer GDDs:

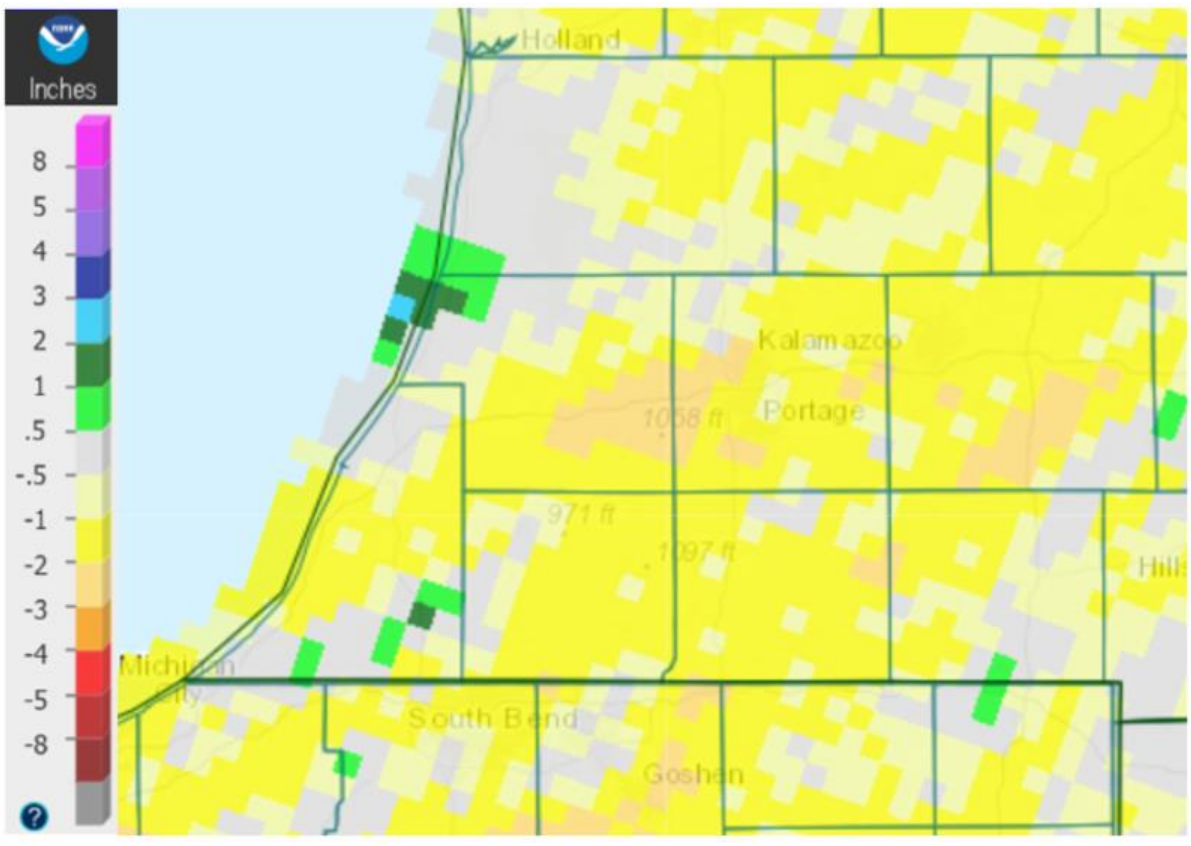
Corn Growing Degree Day Tool

Chart Options

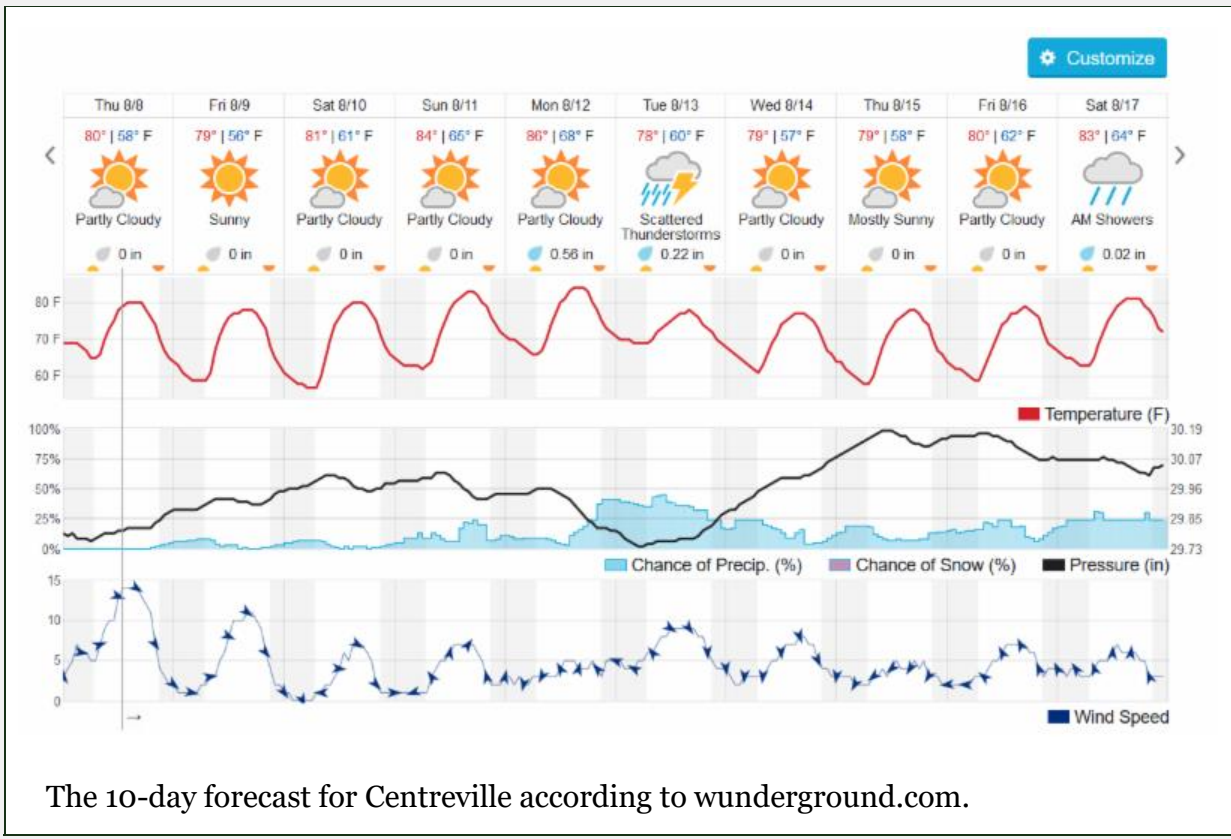
Location: 41.92, -85.53 in St. Joseph Co., MI, Start Date: June 1, Maturity Days: 90, Freeze Temp: 28°F, Variation: All Years



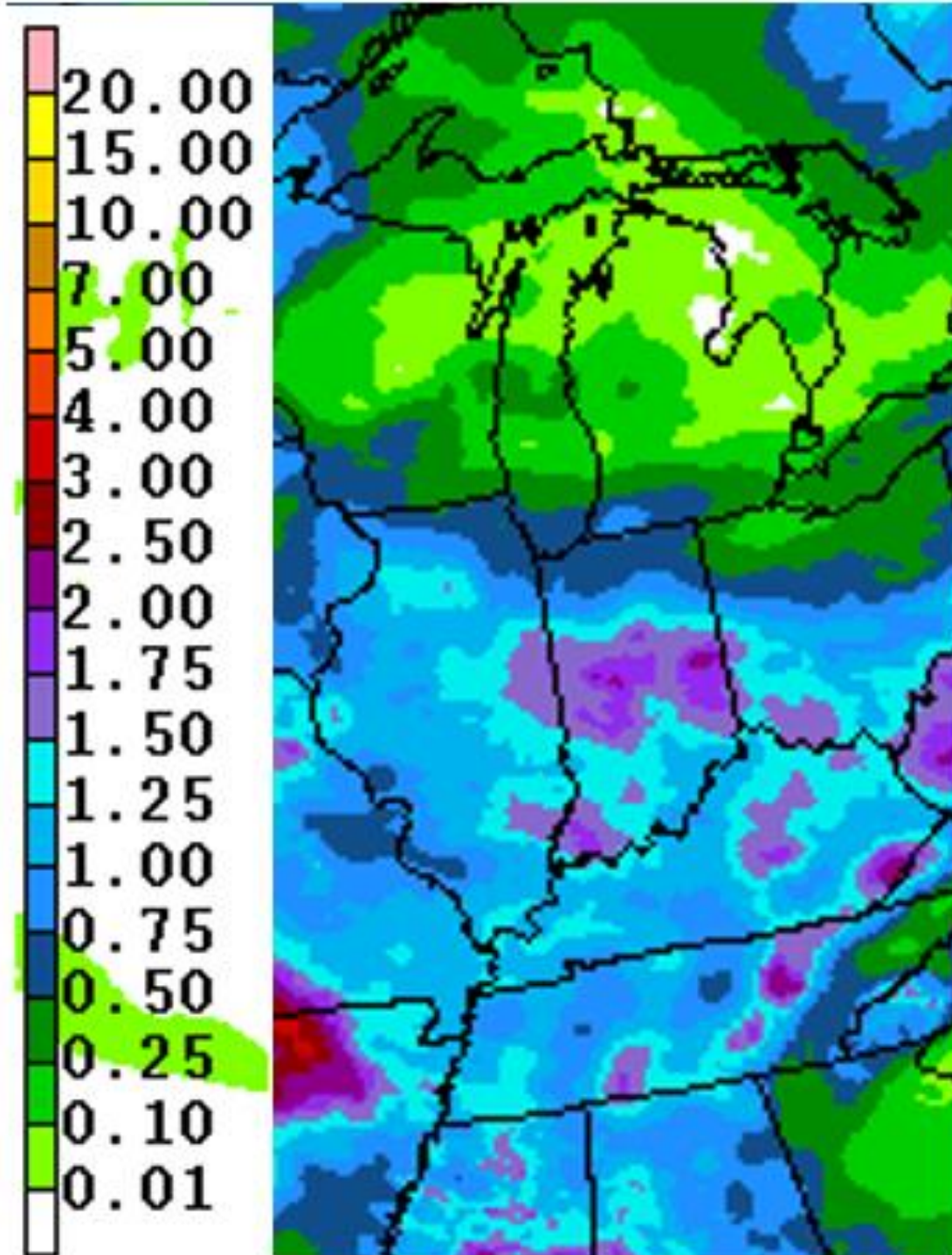




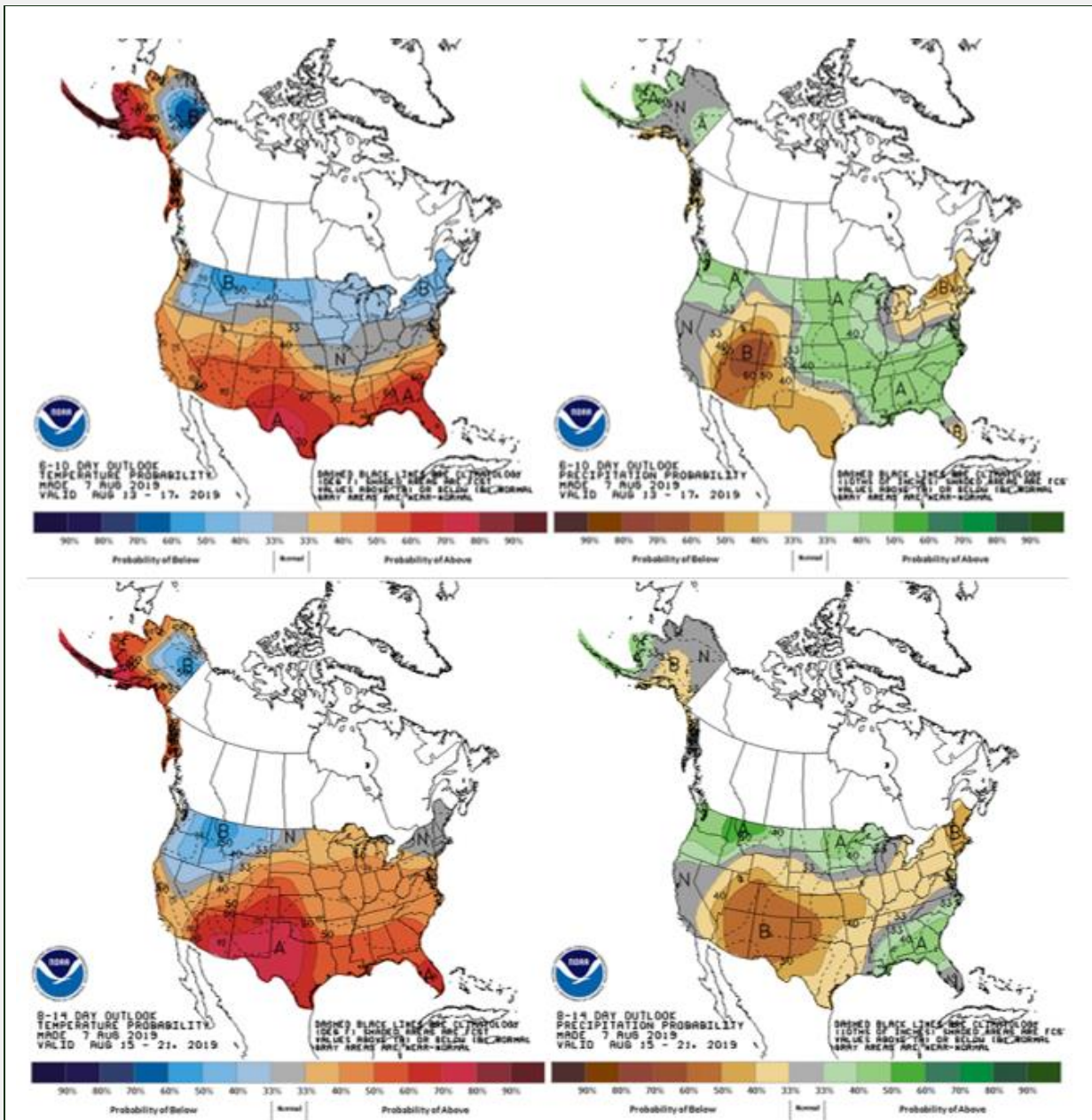
Precipitation totals for week ending August 8, 2019 (top). The bottom graphic shows rainfall departure from normal over the past 30 days.



The 10-day forecast for Centreville according to wunderground.com.



Forecast for precipitation totals for the week of Aug 8-15, 2019....1/4" to 1.0 inches depending on location.



National Weather Service 6-10 day outlook (Aug 13-17, top) and the 8-14 day outlook (Aug 15-21, bottom) for temperature (left) and precipitation (right). Temperatures will remain cooler than normal for the next week before returning to warmer than normal during the third week of August.

Calendar

Titles are clickable links to online content when highlighted and underlined

Aug 15 **Field Crops Virtual Breakfast Free Webinar.** Thursdays 7:00-7:30 AM. This week: “Industrial Hemp” with Kurt Thelen. Join via computer or mobile device (audio and video, <https://msu.zoom.us/j/552324349>) or by phone (audio only, **669-900-6833** and enter meeting ID **552-324-349**). To receive a weekly reminder of the Virtual Breakfast, sign up at <http://eepurl.com/gm-PIv>.

Aug 16 **SW MI Crop and Irrigation Research Field Day.** 8:00am-1pm. N. Centreville Rd. 1/2-mile south of Featherstone Rd., Sturgis, MI. Join MSU crop and irrigation educators and specialists for several talks highlighting ongoing research and current recommendations in irrigated corn and soybean. Cost is free, register online by Aug. 14th to reserve space and lunch.

Aug 20-21 **2019 Bridging the Experience Gap.** Saginaw Valley Research and Extension Center, 3775 S Reese Rd, Frankenmuth, MI. This program provides a platform for professionals to gain experience, network with their peers and ask questions from knowledgeable instructors without fear of rejection or criticism. Cost is \$350, supplies and lunches included, register online.

Aug 21 **Small Farm Environmental Education Day.** 10am-2pm. Food Forest Farm and Nursery, 558 River Rd, Coldwater, MI. \$10/person includes lunch. MAEAP Phase I credit available. Call the Branch Conservation District (517-278-2725 x5) to RSVP.

Sep 5 **Cass MAEAP Field Day.** 4-7pm. Crane Pond DNR office, 60887 M-40, Jones, MI. Managing for Forestry Health and Profit. Program offers 2 RUP credits. Co-sponsored by SWMLC, DNR, SWxSW CISMA & MAEAP. Dinner provided to registrants. Call 269-445-8641 x 5 to RSVP.

MSU Extension Digest Briefs

Corn and soybeans will be competing for irrigation this year

PUBLISHED ON AUGUST 8, 2019

Late-planted corn will have maximum water needed well into August, matching the typical time for irrigating soybeans for many irrigators.

Field Crops Virtual Breakfast focuses on industrial hemp production

PUBLISHED ON AUGUST 7, 2019

MSU Extension’s Field Crop Virtual Breakfast on Aug. 15 will discuss production aspect of industrial hemp in Michigan

Last minute emergency forage planting options

PUBLISHED ON AUGUST 6, 2019

With time running out on the growing season, what are the best remaining options to extend forage supplies?

Good hay crop in Michigan’s eastern Upper Peninsula

PUBLISHED ON AUGUST 5, 2019

So far, local farmers report an above-average yield and good quality hay despite a wet and late spring season.

Getting the most from your single-cut hay system

PUBLISHED ON AUGUST 2, 2019

For a variety of reasons, many hay acres across Michigan are harvested only once per year. Here are some tips for good results in this situation.

Eric Anderson
Michigan State University Extension
Field Crops Educator - St. Joseph County
612 E. Main St., Centreville, MI 49032
(269) 467-5510 (Office)
(269) 467-5641 (Fax)

MSU is an affirmative-action, equal-opportunity employer, committed to achieving excellence through a diverse workforce and inclusive culture that encourages all people to reach their full potential. Michigan State University Extension programs and materials are open to all without regard to race, color, national origin, gender, gender identity, religion, age, height, weight, disability, political beliefs, sexual orientation, marital status, family status or veteran status. Issued in furtherance of MSU Extension work, acts of May 8 and June 30, 1914, in cooperation with the U.S. Department of Agriculture. Jeffrey W. Dwyer, Director, MSU Extension, East Lansing, MI 48824. This information is for educational purposes only. Reference to commercial products or trade names does not imply endorsement by MSU Extension or bias against those not mentioned.