

See what's happening at Tollgate this month!



MSU Tollgate Farm August 2020



Visit Our Website or Follow us on  

Save the Date! Upcoming Events



Tollgate programming and events during Coronavirus COVID-19

Michigan State University has made the decision to cancel or postpone all in person activities until further notice. This means

the farm will be closed to the public, but select volunteers have been given permission to work in the gardens on the farm. Although this may make it appear that Tollgate is now open to the public we remain closed. If you are interested in volunteering at Tollgate, [see the article below](#) on instructions for steps to volunteer. We appreciate your help in keeping our staff and volunteers healthy and safe by not entering the farm during this time.

NEW! Virtual Goat Experiences

Last time we checked goats can't use phones very well, but luckily our MSU Tollgate staff can! Join us for Virtual Goat Encounter and Storytime Friday mornings in September. Want a personal goat encounter? Sign up for Goat to Meeting or Goat Shout Outs! Learn more about our new virtual goat experiences [here](#).



NEW! Virtual Evenings in the Garden

Register for these upcoming virtual sessions [here](#).

September 10

Dr. Tyler Bassett -

Michigan's Native Grasslands and Savannah's: The tallgrass prairie and savanna grasslands of North America are among the most critically imperiled ecosystems in the world. Dr. Bassett will discuss efforts to restore the remnant examples of these ecosystems in Michigan which provide habitat for the many rare species that depend upon them. Dr. Bassett is a botanist and plant ecologist and works for MSU Extension and on the Michigan Natural Features Inventory.

October 15

Jae Gerhart - *The Impacts of Covid-19 on Local Food Systems:* Washtenaw County Food Systems Coordinator, Jae Gerhart, explores the impacts of the coronavirus on local food systems - from production and processing to distribution, effecting the economy and health of the region.

October 29

Angie Lucas - *Ferntastic!:* Learn some fascinating facts about ferns of the NW Lower Peninsula by joining us for a presentation by Angie Lucas, Senior Land Steward and botanist at the Grand Traverse Regional Land Conservancy, as she presents an overview of the native fern species found in the Grand Traverse region and how land protection and

stewardship efforts benefits rare and declining species, as well as some identification tips and resources to use while exploring the northern forest and wetland trails of northwest lower Michigan. Additionally learn how GTRLC uses various tools like floristic quality assessments to prioritize restoration, protection and other nature preserve projects.

Evenings in the Garden presents: Race, Food, & Land in Detroit.

Across the United States Black farmers and Black communities face major barriers related to farmland acquisition and food sovereignty. These issues often go unseen. MSU Extension and MSU Tollgate Farm is facilitating a three-part lecture series to investigate the past, present, and future of race relations in Detroit and how it has impacted land acquisition and food sovereignty. The last two parts of this series will be August 27th and September 24th. During each session, a team of MSU Extension facilitators, will be joined by panelists from across the Detroit food systems landscape to share their lived and learned experiences. Registration fees, minus the cost of stipends for the panelists, will go toward initiatives that support the needs of Black/African-American farmers in Detroit. Individual sessions are \$10 each or \$25 for all three.



Pre-register for these Zoom sessions [here](#). Each session is eligible for 2 hours of continuing education for Extension Master Gardeners.

If you would like to attend but are unable to contribute financially, scholarships are available for qualifying participants on a first come first served basis.

Explore Self-Care and Stress Reduction, August 20, 4 pm For ages 13-19

Over fifty Tollgate Farm
stewards and stewards-in-



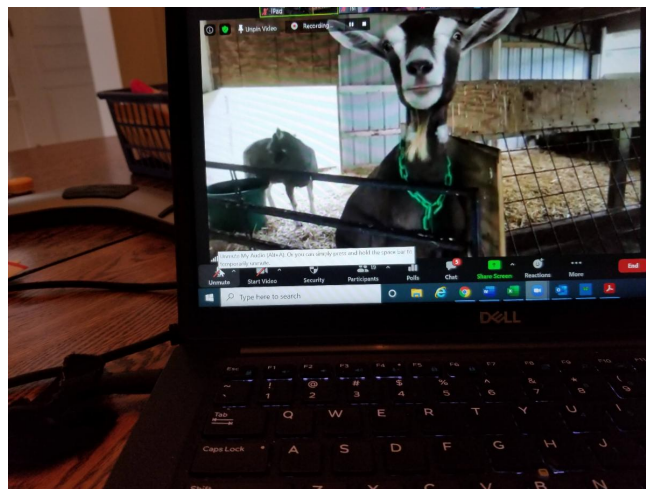
training have signed on to be a part of a virtual summer series to explore topics of leadership and resiliency together. These strong teen leaders, led by a group of their peers, have explored topics from mindfulness to communication, time management, relationships, money management, and more. We even tried our first Goose Chase Challenge, just for fun! Teens ages 13-19 are welcome to join us Thursday, August 20th, 4 pm, for the last in our

summer series as Kea Norrell-Aitch explores how self-care and stress reduction can play an important role in our health in these challenging times and beyond!

[Register here!](#)

Virtual Learning Takes Shape At Tollgate: Experiential Learning in a Virtual World

How does the farm take experiential farm-based education into the world of remote learning? This summer, Tollgate's education staff ventured into the world of synchronous virtual programming with nearly one hundred campers to find out. [Read more here.](#)



Want a look inside one of our virtual programs? Check out the Virtual Vet Science Blog with all the fun interactive activities and videos [here.](#)



HELP US DESIGN VIRTUAL PROGRAMMING

Take our survey!

Help Us Design Virtual Programming

At MSU Tollgate Farm, we want to know how we can help you during this time of remote learning by connecting students with the science phenomena on the farm and in the students' community. Are you a parent? A

teacher? An administrator? A homeschool group leader? We need your feedback to help us design virtual programming! Please complete our survey [here](#) and share with any other parents or teachers you know!

For In-Person School Classes and Families Learning at Home: Join Tollgate This Fall for Remote Learning Opportunities

This fall, in person classes and students learning from home are able to explore the farm and the natural world virtually through inquiry and place-based learning. Remote learning series are available in a variety of formats which include video segments, journal pages, STEM challenges, and interactive virtual visits from the farm. Tollgate Farm programs align with teaching goals, standards, and science kits. Series include **Vet Science** (grades 5-8), **Plants and Pollination** (early elementary), **The Nutrient Cycle on the Farm** (grades 3-5), **The Secret Life of Trees** (K-2), and **Harvest Farm Ecology** (grades K-5).



Interested in a farm-school virtual collaboration for this coming school year? For more information, email Ellen Koehler.

Tollgate strives to provide opportunities for youth and adults of all income levels and welcomes a broad cross-section of participants to experience farm-based experiential learning. The goal of the financial aid process at Tollgate is to provide as many youth and adults as possible with the opportunity to enrich learning and broaden their experiences. Funding is limited and applications are reviewed based on the needs of the participants, potential impact on their learning, cost of the program, and potential for meaningful collaboration.



Summer Adventures from Home

COVID-19 presented us with a challenge on how we can continue to fulfill our mission of providing hands-on, screen free, and experiential learning opportunities to our community.

We are now on week 9 of 10 weeks of our free summer "virtual" programming. You can visit our blog [Experience Tollgate](#) to access a camp themed page filled with educational videos, excursion ideas, recipes, and easy to do activities that are perfect to keep your at-home-campers busy, learning and exploring! Although this won't be able replace our summer camp on the farm we hope that the community can use it as a tool to inspire the youth to get outside and discover all the magic that nature has to offer!

Get your Tollgate swag from our new Farm Store!

We still have limited T-shirt sizes available. Check out our new Farm Store for two t-shirt options, the one seen here and the 2020 camp t-shirt.

Visit the Farm Store [here](#).



Tollgate Farm Highlighted on Public Television's Camp TV

What is the role of a chicken on a farm? And how is a chicken connected to the rest of the

living things around us? Tollgate was highlighted on Detroit Public Television's Camp TV on Friday, August 14th as viewers got an up-close look at the role chickens play on a farm and their role in the nutrient cycle. In addition, Camp TV campers explored the important parts of an egg as they followed along with an egg dissection!

[View episode here.](#)

Fall CSA Registration Coming Soon!

Are you interested in a weekly supply of seasonal, sustainably grown produce? Join us for our Fall CSA, which starts October 21st and runs for 10 weeks.

Registration will open in September, keep your eyes on the newsletter for registration information when it opens!



This Month's 4-H Newsletter is



Book of Black entomologists' memoirs shows young people the possibilities

Joy Landis - July 2, 2020

Book co-editor Willye Bryan says young Black people need to see individuals who look like them in the field of entomology as an incentive to choose the field as a career.

Reasons for low numbers of African Americans and other minorities in the field of entomology are multi-layered and a challenge to address. Young Black people have negative associations and experiences with farming and rural settings where much of entomological work occurs. In most instances, agricultural careers are seen as field work that is generally equated with past injustices experienced by African Americans in the U.S. Even urban entomologists do not intentionally recruit in

urban schools or programs that mentor African American young people. Most young people have little interaction with those working in the sciences and racism is a factor as well.

With heightened awareness that the entomology field needs more diversity, one step people can take is to amplify a resource already in place that showcases careers of Black entomologists. The book "Memoirs of Black Entomologists: Reflections on Childhood, University, and Career Experiences" was published by the Entomological Society of America (ESA) in 2015. It includes three entomologists who studied or worked at Michigan State University and one of them, Willye Bryan, was part of the book's editorial team.

"When I first went to the annual ESA meeting in the early 80s, there weren't many Black people attending, probably about 10 or 12," Bryan said. "We would get together for dinner

Here!

Oakland County 4-H Connections is a monthly newsletter for 4-H members, families, and the general community with news and information about 4-H youth development activities in Oakland County.

August Newsletter

Tollgate News & Announcements

Interested in Volunteering at Tollgate?

We are grateful and appreciate our volunteers at MSU Tollgate Farm. We are now able to allow Extension Master Gardeners and Non-Extension Master Gardener volunteers to return to the farm once they have completed our new volunteer selection process. If you would like to begin the steps to volunteer, please visit our blog for the full instructions. Please remember that we cannot allow volunteers to enter the farm until they are completed this process and have permission from our Farm Manager, Roy Prentice, or Education Coordinator, Ellen Koehler.



Update on Sustainable Agriculture at Tollgate Farm

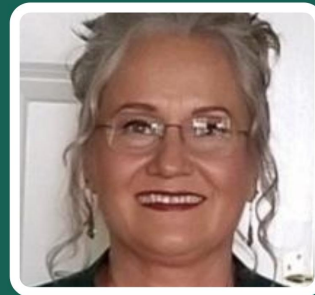
Our Sustainable Agriculture team doesn't just grow amazing produce for the CSA, they also educate the public and CSA members about sustainable agriculture. Want to learn more? Click here to read more.



Meet Our Staff & Volunteers!

Curious about everyone who works at MSU Tollgate Farm? Every Monday on our Facebook and Instagram we feature a staff member or volunteer. The last month we have featured Carmen Hamilton, an Educational Program Leader, Renee Cottrell, President of the Tollgate Garden Volunteers organization, Ellen Koehler, our Education Coordinator, and Kathryn Fitzpatrick, the Area Garden Leader for the MSU Tollgate PAR (Plant a Row for the Hungry) Garden. Read more about these staff and volunteers [here](#).

MEET OUR VOLUNTEERS



Kathryn Fitzpatrick

MSU Tollgate Farm and Education Center offers programs throughout the year designed to allow adults and children to experience learning hands-on, explore the joys of gardening and the natural world, appreciate and promote locally grown food, and build community.

MICHIGAN STATE
UNIVERSITY | **Extension**

MSU Tollgate Farm and Education Center
28115 Meadowbrook Rd.
Novi, MI 48377

248-347-0269
tollgateprograms@msu.edu
<http://tollgate.msu.edu/>

MSU is an affirmative-action, equal-opportunity employer. Michigan State University Programs and materials are open to all, without regard to race, color, national origin, gender, gender identity, religion, height, weight, disability, political beliefs, sexual orientation, marital, family or veteran status.

STAY CONNECTED with TOLLGATE:

