

See what's happening at Tollgate this month!



MSU Tollgate Farm July 2020



Visit Our Website or Follow us on  

Save the Date! Upcoming Events



Tollgate programming and events during Coronavirus COVID-19

As you may already know, Michigan State University has made the decision to cancel or postpone all in person activities until September 1st. This means the farm will be closed to the public until September 1st, but select volunteers have been given permission to begin work in the gardens on the farm. Although this may make it appear that Tollgate is now open to the public we remain closed. If you are interested in volunteering at Tollgate, [see the article below](#) on instructions for steps to volunteer. We appreciate your help in keeping our staff and volunteers healthy and safe by not entering the farm during this time.

**Evenings in the Garden
presents: Race, Food, & Land**

in Detroit.

Across the United States Black farmers and Black communities face major barriers related to farmland acquisition and food sovereignty. These issues often go unseen. MSU Extension and MSU Tollgate Farm will be facilitating a three-part lecture series to investigate the past, present, and future of race relations in Detroit and how it has impacted land acquisition and food sovereignty. During each session, a team of MSU Extension facilitators, will be joined by panelists from across the Detroit food systems landscape to share their lived and learned experiences. Registration fees, minus the cost of stipends for the panelists, will go toward initiatives that support the needs of Black/African-American farmers in Detroit. Individual sessions are \$10 each or \$25 for all three.



Pre-register for these Zoom sessions [here](#).

Each session is eligible for 2 hours of continuing education for Extension Master Gardeners.

If you would like to attend but are unable to contribute financially, scholarships are available for qualifying participants on a first come first served basis.



**Registration is now LIVE
Tollgate's Virtual Interactive
Outdoor Adventure Camp
July 27-31 Ages 11-14**

Daily virtual interactive
wilderness skill-building

sessions accompany self-directed blog activities and challenges to try in the great outdoors. Topics include Team-building and the Ten Essentials, Knot-Tying and Fishing Skills, Kayaking and Paddling Basics, Shelter-building and Fire-building, and Survival Skills Showcase. Those who register for Tuesday's session will receive supplies in the mail for knot-tying and fishing skills with special guest Mark Stephens of Project FISH.

[Register here!](#)

MSU Tollgate Virtual Summer Stewards Series Continues!

The Tollgate Summer Virtual Stewards Series continues with more sessions designed for past, present, and potential stewards and stewards-in-training ages 13-19. Join us July 23rd at 4 pm for a session on Friendships, Boundaries, and Communication with Lisa Tams, a Master's level licensed and accredited clinical social worker with MSU Extension. Lisa has an open inviting way of allowing participants to explore ideas of healthy relationships. Youth-led and staff moderated, this series is designed for teen to gain resiliency and leadership skills. Remaining sessions include Fun Money: Money Management and YOU on August 6th and Stress Reduction and Self Care on August 20th.



[Register here!](#)



Summer Adventures from Home

COVID-19 presented us with a challenge on how we can continue to fulfill our mission of providing hands-on, screen free, and experiential learning opportunities to our community. We are now on week 4 of our 10 week long free summer "virtual" programming. You can visit our blog [Experience Tollgate](#) to access a camp themed page

filled with educational videos, excursion ideas, recipes, and easy to do activities that are perfect to keep your at-home-campers busy, learning and exploring! Although this won't be able replace our summer camp on the farm we hope that the

community can use it as a tool to inspire the youth to get outside and discover all the magic that nature has to offer!

Farm and School Learning Collaboration for the 2020/2021 School Year

Using research-based curriculum and methods, school and community groups explore the farm and the natural world through inquiry and place-based learning. Remote learning series are available which include video segments, journal pages, and interactive



virtual classroom visits from the farm. Tollgate Farm education staff is able to tailor a program or series to align with your teaching goals, standards, and science kits.

Interested in a farm-school virtual collaboration for this coming school year? For more information, email [Ellen Koehler](mailto:Ellen.Koehler@msu.edu).

Tollgate strives to provide opportunities for youth and adults of all income levels and welcomes a broad cross-section of participants to experience farm-based experiential learning. The goal of the financial aid process at Tollgate is to provide as many youth and adults as possible with the opportunity to enrich learning and broaden their experiences. Funding is limited and applications are reviewed based on the needs of the participants, potential impact on their learning, cost of the program, and potential for meaningful collaboration.

[Reserve School-to-Farm Visit for 2020/2021 School Year Here](#)



Box!

Are your campers at home bored and missing summer camp? Have no fear, MSU Tollgate has a solution! This summer we are offering two different camp themed boxes,

the **Survival Box** and **Garden Box**. Each of these boxes are filled with camp activities, materials, camp favorite Garden Kitchen recipes, camp swag, and much more! From starting your own compost pile to dissecting an owl pellet, these boxes will provide experiential learning opportunities that promote curiosity and discovery! These boxes are perfect for everyone and are only available for a limited amount of time! Don't delay and visit our Farm Store to buy your "Camp-in-a-Box" today!

Get your Tollgate swag from our new Farm Store!

We still have limited T-shirt sizes available. Check out our new Farm Store for two t-shirt options, the one seen here and the 2020 camp t-shirt.

Visit the Farm Store [here](#).



Virtual Mornings on the Farm

Mornings on the Farm with sustainable agriculture educator Will Jaquinde will continue to be virtual for the rest of the summer with a \$15 cost for attendees.

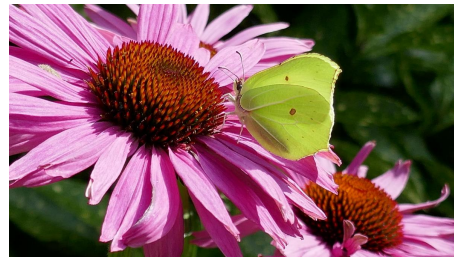
The next workshop on August 16th on Season Extension and Putting the Garden to Bed. Will is in his 5th season managing the vegetable

production at MSU Tollgate, which grows more than 150 varieties across 50 crops and three acres using organic growing practices for a community supported agriculture (CSA) program. In this series, Will shares his decades of plant experience to help you grow a low maintenance, productive vegetable garden! If you have any questions about the series, please email [Will Jaquinde](#).

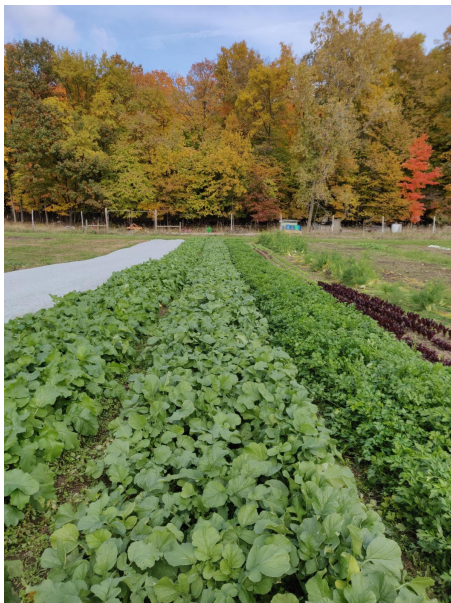
For more information or to register, visit the [event page](#).

The Tollgate Pollinator Project

What are pollinators, and why are they important to us? How can we help pollinators?



The Tollgate Farm Pollinator Project is a new remote learning series for formal and non-formal educators including videos, journal pages, and resources for place-based learning about plants, pollinators, and pollination. For more information, visit the [website](#).



Fall CSA Registration Coming Soon!

Are you interested in a weekly supply of seasonal, sustainably grown produce? Join us for our Fall CSA, which starts October 21st and runs for 10 weeks. Registration will open in September, keep your eyes on the newsletter for registration information when it opens!

This Month's 4-H Newsletter is Here!

Oakland County 4-H Connections is a monthly newsletter for 4-H members,

families, and the general community with news and information about 4-H youth development activities in Oakland County.

July Newsletter



Pathology as a career option

Frank Cox, Michigan State University Extension - June 17, 2020

Are you interested in investigating different issues related to a sickness or illness? Can you see yourself working in a lab setting or conducting research? Doctors are needed for research and treating patients with health issues or for determining the cause of death in patients. If you can see yourself helping to solve issues related to a sickness or illnesses, consider a career in pathology.

Pathology is the study of various body tissues or secretions for signs of illness and medical conditions. A pathologist is a physician who leads the examination of the tissue and organ samples and coordinates or communicates with the primary care physician to ultimately determine a diagnosis of disease or cause of death. Pathologists practice in different settings such as hospitals, clinics, independent laboratories, private offices and other medical facilities. Their job responsibilities will

consist of running tests, interpreting the results, working with other doctors to explore treatment options and research.

Most pathologists become trained in clinical and anatomical pathology. The subspecialty areas in this field are blood banking/transfusion, chemical pathology, clinical informatics, cytopathology, dermatopathology, forensic pathology, hematology, medical microbiology, molecular genetic pathology, neuropathology and pediatric pathology.

A bachelor's degree, four years of medical school and a residency are requirements to become a pathologist. For the bachelor's degree, a student can major in the sciences such as biology, chemistry, biochemistry, microbiology or physics. Any major can be acceptable but a student needs to meet the prerequisites for medical school, including all the classes needed.

Students in high school can prepare for a career in pathology in different ways. First, strive to get the best grades in the math and science classes. To prepare for college, research colleges and universities that have good science programs or

Tollgate News & Announcements



Interested in Volunteering at Tollgate?

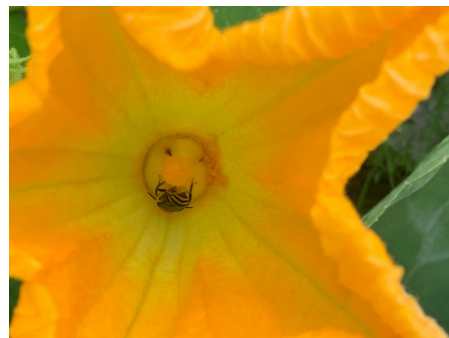
We are grateful and appreciate our volunteers at MSU Tollgate Farm. We are now able to allow Extension Master Gardeners and Non-Extension Master

Gardener volunteers to return to the farm once they have completed our new volunteer selection process. If you would like to begin the steps to volunteer, please visit our blog for the full instructions. Please remember that we cannot allow volunteers to enter the farm until they are completed this process and have permission from our Farm Manager, Roy Prentice, or Education Coordinator, Ellen Koehler.

Update on Sustainable Agriculture at Tollgate Farm

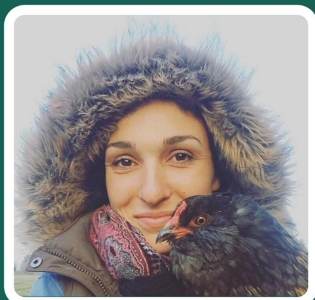
Our Sustainable Agriculture team has been sweating and working hard in the fields and although we might not like the heat, the hot crops are loving it.

Want to hear more about how the crops are doing in the field and how squash pollination happens? [Click here to read](#)



more.

MEET OUR STAFF



Rachael Moran: Place-Based
Livestock Instructor

Meet Our Staff & Volunteers!

Curious about everyone who works at MSU Tollgate Farm? Every Monday on our Facebook and Instagram we feature a staff member or volunteer. The last month we have featured Rachael Moran, our Place-Based Livestock Instructor,

Wayne Watson, a long time Maple Sugaring volunteer, Will Jaquinde, our Sustainable Agriculture Instructor, and Mary Hutka, Tollgate Farm 4-H Club Leader. Sadly, Rachael will be leaving Tollgate this week but we were glad to feature her and highlight all her hard work and improvements. Read more about these staff and volunteers [here](#).

Tollgate Opportunities

Rent the Tollgate Conference Center Starting September 1st, 2020 with a 20% discount in 2021

Because of the COVID-19 pandemic, MSU Tollgate has cancelled all weddings, business meetings, festivals and educational events through September 1st, 2020. With all the disappointment COVID-19 has brought to our lives, we would like to offer a 20% discount to any group that was unable to have their event in 2020, whether it was scheduled at MSU Tollgate or not. The discount will apply to the rental rate for any event scheduled in 2021.



To learn more about hosting your event at Tollgate, visit the [Conference Center Website](#) and see more photos of our historic barn and conference center on our [blog](#). Questions? Email our Events Coordinator [Kari Heughens](#).

MSU Tollgate Farm and Education Center offers programs throughout the year designed to allow adults and children to experience learning hands-on, explore the joys of gardening and the natural world, appreciate and promote locally grown food, and build community.

MICHIGAN STATE | **Extension**
U N I V E R S I T Y

MSU Tollgate Farm and Education Center
28115 Meadowbrook Rd.
Novi, MI 48377
248-347-0269
tollgateprograms@msu.edu
<http://tollgate.msu.edu/>

MSU is an affirmative-action, equal-opportunity employer. Michigan State University Programs and materials are open to all, without regard to race, color, national origin, gender, gender identity, religion, height, weight, disability, political beliefs, sexual orientation, marital, family or veteran status.

STAY CONNECTED with TOLLGATE:

