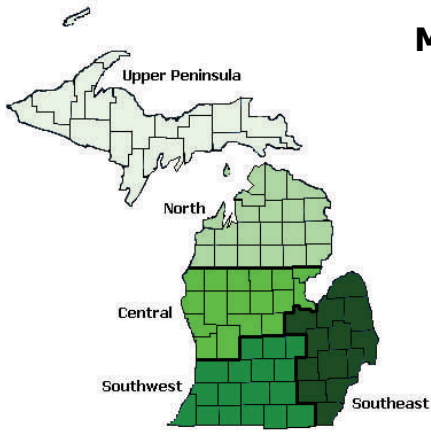


Michigan State University Extension



Michigan State University Extension (MSUE) helps people improve their lives through an educational process that applies knowledge to critical issues, needs and opportunities.

For more information
Contact:

MSU Extension – Roscommon County
PO Box 507
500 Lake Street
Roscommon, MI 48653
Phone: 989-275-5043
E-mail: msue72@msu.edu

This profile is brought to you by the
**Michigan State University Extension and the
Community Development Area of Expertise Team**
Helping build Michigan communities through interdisciplinary
and customer-focused educational programming and processes.

Profile data sources: U.S. Census Bureau unless otherwise noted.

December 28, 2006

Michigan State University Extension programs and materials are open to all without regards to race, color, national origin, gender, religion, age, disability, political beliefs, sexual orientation, marital status or family status.

Michigan State University, U.S. Department of Agriculture and counties cooperating.
Michigan State University is an affirmative-action, equal-opportunity institution.

MICHIGAN STATE
UNIVERSITY
EXTENSION

Roscommon County Profile



Brought to you by

**Michigan State University Extension
Community Development Area of Expertise Team**

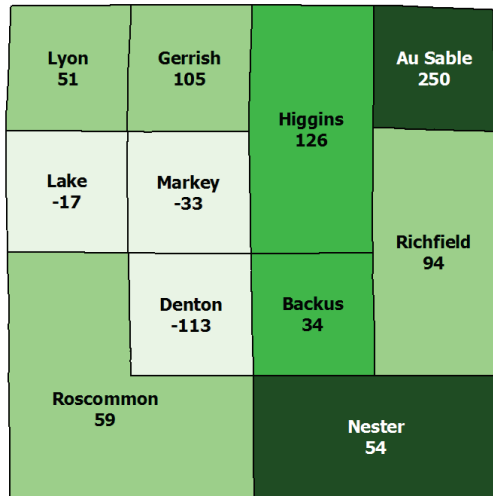
<i>Quick facts</i>	<i>Roscommon County</i>	<i>Michigan</i>
Land area, 2000 (square miles)	521	56,804
Population, 2005 estimate	26,079	10,120,860
Housing units, 2004	24,578	4,433,482
Households, 2000	11,250	3,785,661
Median household income, 2003	\$30,028	\$46,291
Retail sales, 2002 (\$1000)	320,147	109,350,139
Median age, 2000	47.2	35.5

MICHIGAN STATE
UNIVERSITY
EXTENSION

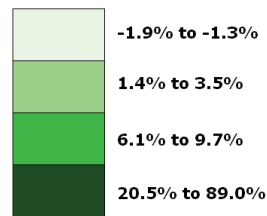
Population

Roscommon County Population Change From 2000 to 2005 Estimate

Number Change



Percent Change



Minor Civil Divisions & County Population	1990	2000	2005 Estimate
Roscommon County	19,776	25,469	26,079
Au Sable township	231	281	531
Backus township	249	350	384
Denton township	4,290	5,817	5,704
Gerrish township	2,421	3,072	3,177
Higgins township	1,685	2,061	2,187
Lake township	1,234	1,351	1,334
Lyon township	1,037	1,462	1,513
Markey township	1,768	2,424	2,391
Nester township	225	263	317
Richfield township	3,413	4,139	4,233
Roscommon township	3,223	4,249	4,308

Poverty

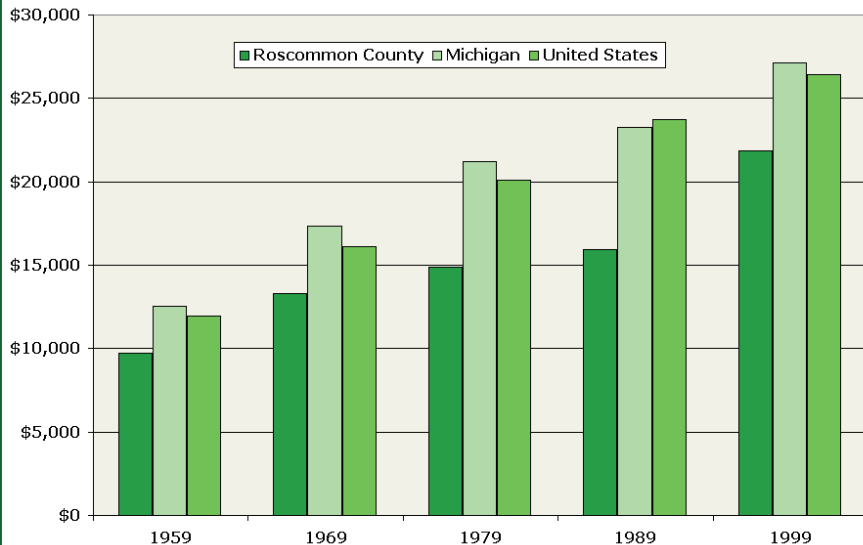
Poverty Rates Comparison	1989			1999		
	Roscommon County	Michigan	United States	Roscommon County	Michigan	United States
All Families	14.2	10.2	10.0	8.6	7.4	9.2
With related children under 18 years	22.5	16.0	14.9	17.6	11.3	13.6
With related children under 5 years	27.1	20.6	18.3	23.7	14.7	17.0
Families with female householder, no husband present	48.3	35.8	31.1	35.7	24.0	26.5
With related children under 18 years	58.8	48.1	42.3	46.4	31.5	34.3
With related children under 5 years	70.4	64.6	57.4	65.7	44.2	46.4
All Individuals	18.1	13.1	13.1	12.4	10.5	12.4
18 years and over	15.9	11.1	11.3	10.6	9.3	10.9
65 years and over	12.4	10.8	12.8	6.5	8.2	9.9
Related children under 18 years	25.8	18.2	17.9	18.9	13.4	16.1
Related children 5 to 17 years	24.2	16.7	17.0	16.6	12.7	15.4

In 1989 the poverty threshold for a household of four with two related children under 18 years was \$12,575. In 1999 the threshold for the same type of family was \$16,895.

Income

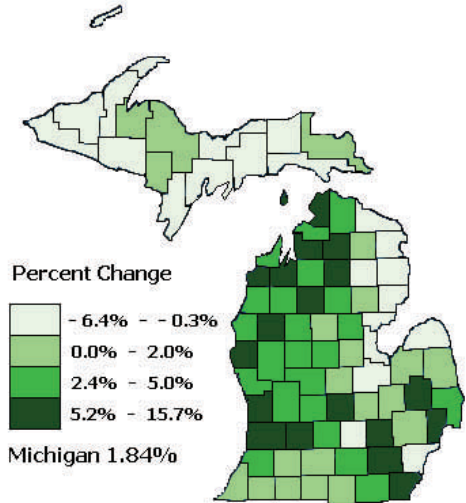
Household Income	Roscommon County		Michigan	
	1989	1999	1989	1999
Less than \$10,000	25.7%	10.7%	15.6%	8.3%
\$10,000 to \$14,999	16.9%	8.8%	8.6%	5.8%
\$15,000 to \$24,999	25.1%	21.0%	16.4%	12.4%
\$25,000 to \$34,999	13.9%	17.5%	15.3%	12.4%
\$35,000 to \$49,999	10.1%	17.2%	18.7%	16.5%
\$50,000 to \$74,999	6.1%	15.2%	16.3%	20.6%
\$75,000 to \$99,999	1.5%	5.3%	5.4%	11.4%
\$100,000 to \$149,999	0.5%	2.8%	2.5%	8.6%
\$150,000 or more	0.2%	1.5%	1.2%	4.1%
Total Households	8,587	11,264	3,424,122	3,788,780
Median Household Income	\$17,047	\$30,029	\$31,020	\$44,667

Per Capita Income Comparison In 2006 Dollars



Source: The 1959, 1969, and 1979 values were brought to 1989 levels by the U.S. Census Bureau. Oct. 5, 2006 levels were calculated using the CGI calculator at <http://data.bls.gov/cgi-bin/cpicalc.pl>.

Michigan Population Change from 2000 to 2005 Estimate



Roscommon County ranks 39 out of 83 in the state for population change from 2000 to 2005 estimate.

Education

Educational Attainment for Persons Age 25 and Over

	Less than 9th grade	9th to 12th grade, no diploma	High school graduate	Some college, no degree	Associate degree	Bachelor's degree	Graduate or professional degree
1990 Roscommon County	8.2%	22.4%	40.6%	15.4%	5.4%	5.1%	2.8%
1990 Michigan	7.8%	15.5%	32.3%	20.4%	6.7%	10.9%	6.4%
1990 U.S.	10.4%	14.4%	30.0%	18.7%	6.2%	13.1%	7.2%
2000 Roscommon County	4.4%	16.1%	39.2%	23.2%	6.2%	6.5%	4.4%
2000 Michigan	4.7%	11.9%	31.3%	23.3%	7.0%	13.7%	8.1%
2000 U.S.	7.5%	12.1%	28.6%	21.0%	6.3%	15.5%	8.9%

For the 2001–2002 school year, in Roscommon County there were 55 high school dropouts or 5.0% and in Michigan there were 17,167 dropouts or 3.7%.

Source: Michigan Family Independence Agency

Population Composition

Roscommon County			
Age Range	1990	2000	2005 Est
00-04	1,070	1,089	1,005
05-09	1,253	1,465	1,178
10-14	1,177	1,565	1,592
15-19	1,067	1,547	1,552
20-24	795	831	1,597
25-29	1,058	927	1,331
30-34	1,275	1,147	1,200
35-39	1,152	1,566	1,384
40-44	1,057	1,811	1,671
45-49	931	1,699	1,859
50-54	991	1,817	1,728
55-59	1,286	1,980	1,848
60-64	1,731	1,971	1,863
65-69	1,828	1,831	1,752
70-74	1,361	1,737	1,447
75-79	948	1,257	1,436
80-84	517	690	885
85+	279	539	751
County Total	19,776	25,469	26,079

In the 2005 estimate, Roscommon County's population included 12,832 males and 13,247 females, or 49.2% and 50.8% respectively. For Michigan, males represented 49.2% and females 50.8%.

Median Ages

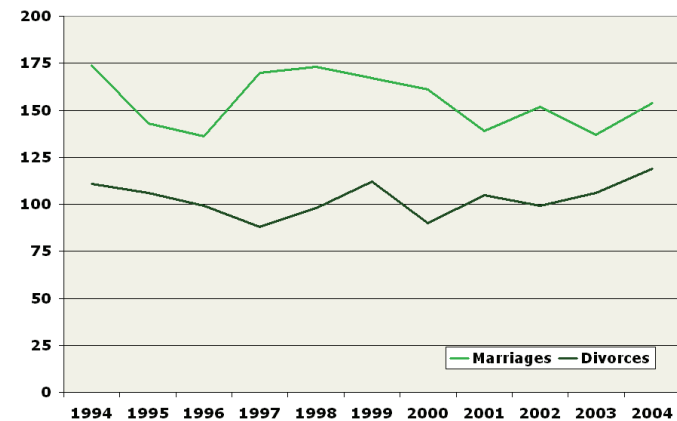
	1980	1990	2000
Roscommon County	40.5	44.9	47.2
Michigan	28.8	32.6	35.5
U. S.	30.0	33.0	35.3

Households & Families

In 2000, Roscommon County had

- 11,250 households and 7,619 families.
- 377 grandparents living in a household with one or more of their own grandchildren under 18 years and of these 133 grandparents were responsible for their grandchildren.
- 869 female householders with no husband present, and 541 of these households included children under 18 years.
- 1,571 householders 65 years and older.
- 1,320 children under age 18 living with a single parent. This represented 25.9 percent of all children in Roscommon County. In Michigan, 24.5 percent of all children lived in single parent families.

Marriage and Divorce History in Roscommon County

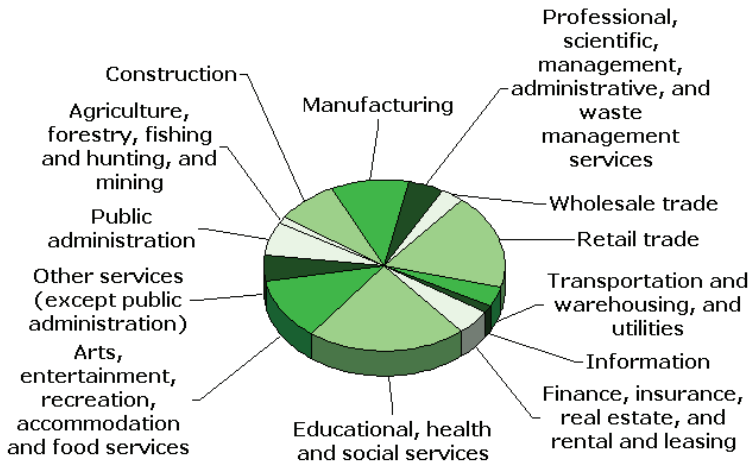


In 2004, there were 36,779 Michigan children involved in divorces and annulments.

Source: Michigan Department of Community Health

Employment

2000 Employment by Industry in Roscommon County



Regional Employment Forecast for Arenac, Clare, Gladwin, Iosco, Ogemaw, and Roscommon Counties	# of Employees		Growth Rate
	2002	Forecast 2012	
Total, Wage & Salary Employment	39,520	44,010	11.4%
Food Services & Drinking Places	4,230	4,720	11.7%
Ambulatory Health Care Services	1,440	1,910	32.7%
Nursing & Residential Care Facilities	1,490	1,890	27.3%
Hospitals	1,690	2,000	18.3%
Specialty Trade Contractors	1,200	1,460	21.5%
Building Material & Garden Supply Stores	910	1,160	27.5%
Administrative & Support Services	760	960	26.6%
Professional, Scientific, & Tech Services	580	740	26.2%

This chart displays the total for the region and the highest forecast growth industries by number of employees. For more information go to www.milmi.org, click on Industry Information and select East Central Michigan.

Roscommon County Population Composition

Population by Race and Hispanic or Latino Origin	1990	2000	2004 Est
White	19,597	25,005	25,615
Black	37	82	125
American Indian/Alaskan Native	101	163	156
Asian or Pacific Islander	23	60	91
Two or More Races	18	159	116
Total	19,776	25,469	26,103
Hispanic or Latino (of any race)	94	204	239

Of the 11,250 households in 2000, there were 575 unmarried partner households, of which

- 9 were male householder and male partner
- 316 were male householder and female partner
- 16 were female householder and female partner
- 234 were female householder and male partner

Urban and Rural Population	Year 2000
Total:	25,469
Urban:	11,094
- Inside urbanized areas	0
- Inside urban clusters	11,094
Rural:	14,375
- Farm	63
- Non-farm	14,312

Disability *	Year 2000
Total population 5 to 20 years	4,654
- With a disability	456
Total population 21 to 64 years	13,526
- With a disability	3,178
- Percent employed	41.3%
- No disability	10,348
- Percent employed	65.3%
Total population 65 years and over	5,912
- With a disability	2,435

* Civilian non-institutionalized population only

Labor Force

Where Roscommon County Residents Work

Roscommon County residents who worked in their own county:

	1980	1990	2000
Number	3,467	4,475	6,140
Percent	84.4%	75.7%	70.4%

Roscommon County residents who worked outside their county of residence, but in Michigan:

	1980	1990	2000
Number	642	1,366	2,499
Percent	15.6%	23.1%	28.7%

Roscommon County residents who worked outside Michigan:

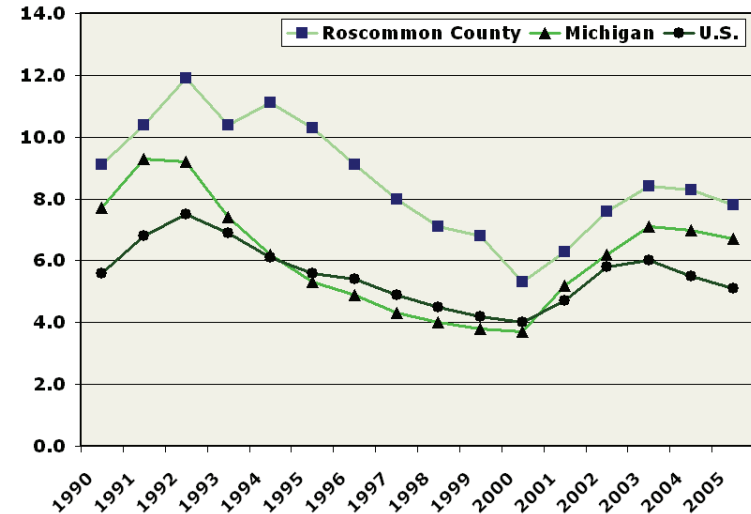
	1980	1990	2000
Number	0	69	80
Percent	0.0%	1.2%	0.9%

Analysis of Roscommon County Women 16 Years and Older In the Labor Force in 2000

	Employed	Unemployed	Not in Labor Force
Women with children of their own, all under 6 years of age.	54.9%	9.9%	35.2%
Women with children of their own under 6 years of age and children of their own between 6 and 17 years.	74.2%	6.5%	19.3%
Women with children of their own between 6 to 17 years only.	71.9%	3.5%	24.6%
Women with no children under 18 years of age.	32.1%	2.3%	65.6%

Unemployment

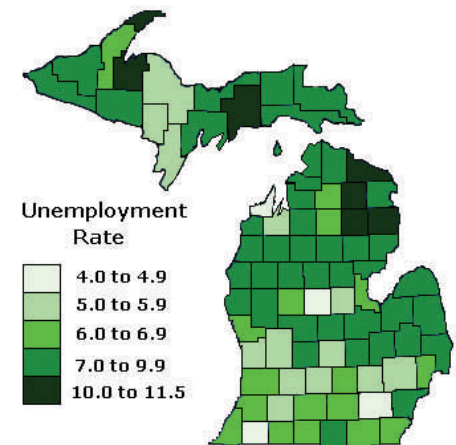
Unemployment Rates 1990 to 2005



Roscommon County Unemployed

Year	%	Count
1997	8.0%	653
1998	7.1%	566
1999	6.8%	557
2000	5.3%	554
2001	6.3%	664
2002	7.6%	790
2003	8.4%	895
2004	8.3%	934
2005	7.8%	893

Unemployment Rates by County not seasonally adjusted Michigan Annual 2005



Source: All data on this page is from the Bureau of Labor Statistics.