

# 4-H NEWSLETTER

## Inside this Edition:

Fair Time	1
Mkt Livestock InforJudging Schedule	2
Ear Tag Requirements to Unload	2
Weigh In/Participation Fees/ Recording	3
Club Responsibilities for Auction	4
Steer Clipping Clinic	4
Market Livestock Info & Committee	5
SMAA Information/ Club Responsi- bilities for Auction	6
Entry day for SMAA	6
SMAA Info/ SMAA Committee	7
All Market Animals	8
MDARD Information	9
Fair Vet	9
MDARD ANIMAL CHECKLIST	10
Horse Information	11
Building Superintendents	12
Complains & Concerns	12
No Food or Drink in Buildings	12
Feeding America	13
4-H Ambassadors	13
DTE Energy Grant– Thank you	13
Stay Off Equipment	13
4-H Grand Slam	14
ALL 5-8 yr. old rules	14
Gate Passes & Items Needed for Fair	15
Volunteers Needed	16
Entry Day / Awards & Nominations	17
4-H # or Y #???	18
Action Demonstrations	18
Youth Exhibit Building Info	19
Keeping Kids Safe—Buddy System	20
<b>4-H CODE OF CONDUCT (by all)</b>	21
Cloverbud Policy	22 & 23

## FAIR NEWSLETTER & INFORMATION!

The information provided in this newsletter will help you prepare for this year's Fair which begins Tuesday, August 22nd and will run thru Saturday evening, August 26th. **Please take some time to read the newsletter carefully.** If you should have any questions, we encourage you to contact the MSU Extension Office at 231-873-2129. We hope that everyone has a great time at the Fair!

If you are entering still exhibits in the youth building - you may enter them between 9:00 a.m.-5:00 p.m. on Tuesday.

Those with animals; when arriving at the Fair, you will follow the established rule of 15 minutes to load or unload feed, or tack, and then you will have to park in the back lot.

**ALL LIVESTOCK AND HORSE TRAILERS MUST BE REMOVED FROM THE FAIRGROUNDS AT THE CLOSE OF ENTRY DAY. ANY TRAILER ON THE GROUNDS WEDNESDAY MORNING WILL BE TOWED.**

We thank everyone for the wonderful cooperation that we have had with parking. Remember, the only people allowed to park by the barns are the *Building Superintendents* and *Fair Vet*.

Please be helpful and supportive to your club members, leaders and stall/ pen neighbors. The Fair is an opportunity to show off your efforts in various project areas and promote Oceana County 4-H.

Information provided & prepared by:  
Samantha Brodley, 4-H Program Coordinator  
&  
Toni Van Bergen, 4-H Secretary

Michigan State University Extension programs are open to all without regard to race, color, national origin, gender, religion, age, disability, political beliefs, sexual orientation, marital status or family status.

---

## MARKET LIVESTOCK INFORMATION

\*\*\* The following information includes important reminders related to the 4-H Market Livestock Projects \*\*\*

**JUDGING SCHEDULE:** The Livestock Judging schedule is as follows:

Wednesday, August 23

8:00 a.m.- Swine judging begins in the Small Arena

8:30 a.m.- Beef judging begins in the Large Arena

4:00 p.m.- Sheep judging begins in the Small Arena

All Livestock Showmanship Classes will be held first.

---

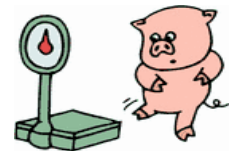
## WEIGHT REQUIREMENTS

Steers– 950 lbs. to 1600 lbs. (since the scales are only rated to 1600 lbs., anything over 1600 lbs. will be sold as 1600 lbs.)

Lambs– 90 lbs. to 185 lbs.

Swine– 220 lbs. to 310 lbs.

Animals that do not meet the above weight ranges will not be eligible to sell during the 4-H Market Livestock Auction.



### **SALE ORDER:**

**\* SWINE \* LAMB \* BEEF \***

---

## EAR TAG REQUIREMENTS

All 4-H Market Livestock Lamb Project animals must be tagged with an ear tags provided by the MSU Extension Office along with their required Scrapies tag. Any animal coming to the Fair without these tags will not be allowed in the barn. Swine must have one green “4-H” tag and one yellow “USDA” tag. Steers must have the required RFID tag. It is your responsibility to notify the Extension Office immediately if and when your animal has lost its ear tag.

**SWINE must have their yellow MDARD tag in their ear and a 4-H tag or cannot be unloaded!**

**All BEEF & DAIRY must have a RFID tag in their ear or cannot be unloaded!**

**SHEEP must have their correct scrapies tag in their ear and also a 4-H tag or cannot be unloaded!**

---

---

## WEIGH –IN DAY AUGUST 22, 2017

### STEER, FEEDER CALF & YOUNG BEEF WEIGH-IN

All steer, feeder calf & young beef market project animals must be weighed in between 8:00 a.m.– 12 noon in the Beef Barn.

### LAMB WEIGH-IN

All 4-H Market Livestock Lamb project animals will be weighed between 8:00 a.m.– 10:00 a.m.

### HOG WEIGH-IN

The 4-H Market Livestock Executive Committee will begin weighing hogs at 10:15 a.m. Hogs must be in their assigned pens no later than 11:00 a.m. and must be weighed no later than noon. If they should arrive early and there are no lambs to be weighed, the weigh-in crew will begin to weigh hogs.

**\*\* GOAT WEIGH-IN (speak with your superintendent)**



---

## PARTICIPATION FEE FOR LARGE & SMALL MARKET



The 4-H Market Livestock Committees have imposed a Participation Fee for all 4-H members *whose animal does not make weight*, and the member elects to keep the animal at the Fair for showmanship classes only. If your animal is either over or underweight or you choose to not participate in the auctions and you want to keep it at the Fair, whether you are going to sell it out of the barn or not, *you must pay a \$25.00 participation fee for Large Market or \$15.00 for Small Market animals*. This fee must be paid by 5:00 p.m. on entry day or you will be required to take it home. Just to clarify, to keep it at the Fair you must pay the \$25 (Lg Mkt) or \$15 (SMAA/JR MKT) fee. This fee was established to help offset the cost of clinics, advertising, buyer's awards, ribbons etc., that are deducted from members that have completed the project with the sale of their animal. **The fee for those electing to stay at the Fair will be due upon entry day; payable to the superintendent.** Members will receive for this fee a sign, which they may display once their auction has begun, that their animal is "For Sale", if they choose to sell the animal out of the barn. **To have your animal hauled to a processor or re-sale auction, you will need to contact Hollis Rockwell, Beef Superintendent, to purchase a hauling pass to have your animal removed from the Fairgrounds by the 4-H Market Livestock haulers.** If you should have any questions please contact the MSU Extension Office at 873-2129.



---

## VIDEO RECORDING

The 4-H Market Livestock Committee has made arrangements to record the auction. 4-H members will have until 12:00 noon on Friday, August 25th to question any sale prices. The 4-Her must go to the MSU Extension Office with any sale questions. If there is a difference in sale prices, Kathy will contact the Market Livestock Committee and make the necessary adjustment. Remember, if you have the slightest question on your sale price, please stop by the Extension Office on Friday after the sale between 8:00 a.m. and 12:00 noon to appeal the recorded price.

---

## MARKET LIVESTOCK AUCTION SCHEDULE

Please check the schedule below to see if your club is responsible for auction preparation or take-down this year. **This does not count as a non-club point, as it is part of your responsibilities as a member of a Market Project.**

Note: The club responsible for auction take-down will also be required to clean (hose/ scrub off) the white cement wall and collect garbage from the Grandstand. **There will be NO non-club points given for cleanup**, it is a club responsibility.

The Market Livestock Committee voted to provide a hot dog/brat roast again this year for the buyer reception. The buyers will be offered hotdogs, brats, chips and bottled water upon presenting their buyer's letter.

YEAR	AUCTION SET UP	RECEPTION	AUCTION TAKE-DOWN
2017	Country Beefmen & The Herd 4-H Clubs	Me & Ewe	Pretty Porkers

**SALE ORDER ~ SWINE ~ LAMB ~ BEEF**

*Continue to promote the auction which takes place on  
Thursday, August 24th beginning at 7:00 p.m.*

*The festivities will kick off with  
the new 2017/2018 ambassador(s) being introduced as  
well as the Special Buyer's plaques being presented to those who  
have been long time supporters of the auction!*

---

## STEER CLIPPING CLINIC

4-Star 4-H Club is hosting a CLIPPING CLINIC on Tuesday, August 15th. If you would like your animal clipped, it will be \$50.00 per animal and begins at 4:00 p.m. You **MUST** call or text Michelle Holladay at 231-742-0414 to schedule a time.

Beginning at 6:00 p.m., there will be a presentation on how to clip your animal. This is worth 1 nonclub point for those in the market projects.



### DISPOSING OF WATER IN THE BEEF BARN

All water to be disposed of from this barn is to be dumped by the fence and not by the barn doors. The entrance to the barn has been a slippery, muddy mess in past years and efforts to keep it dry this year will be enforced.

**Please be helpful and dispose of water along the fence line.**



### STEER CLIPPING PRIOR TO FAIR

It has been requested that all steers be clipped prior to arriving at the Fair. With the many preparations going on during show day, one less activity will help keep the barn traffic flowing smoother.



### REMOVING GROOMING CHUTES

All 4-H Market Livestock Members must have all grooming chutes removed by 1:00 p.m. Thursday of Fair. This will allow for more room during the remaining activities the remaining days of Fair.

**Thank you for your cooperation.**

### SPRINKLING CAN REQUIRED!!

All 4-H Market Livestock Swine Clubs are required to have a sprinkling can filled with room temperature water available during judging and other times when it may be needed to cool



## DO YOU HAVE A PROPOSED RULE CHANGE FOR THE 2017/2018 MARKET LIVESTOCK PROGRAM?

The 4-H Market Livestock Committee will hold its annual fair and program rules evaluation meeting in late September. This is the only time that changes to the 4-H Market Livestock program are made. All 4-H Market Livestock leaders and superintendents are invited to attend in person or to mail or fax written comments to the Committee. If you have an idea or suggestion, please talk to your leader or superintendent and send it in writing to the Extension office to be considered by the committee. Please note that ALL CHANGES ARE FINAL by the time of the Annual Meeting. As it is set on a school night, and is for rules and distributing checks, we would like to remain very efficient with everyone's time!

The current Market Livestock Committee consists of:

**Hollis Rockwell  
Eric Whitaker  
Nicole Rockwell  
Dave Hansen**

**Lance VanSickle  
Stan Hallack  
Joel Woller  
Kim Mischler**

**Michelle Holladay  
Jack Woller  
Emma Babbin  
Ryan VanderZwaag**

### DO YOU WANT TO RUN FOR THE MARKET LIVESTOCK COMMITTEE?

The 4-H Market Livestock Committee seeks interested members, volunteers and parents to submit their name for the election ballot. Fair is the time to make that known. Please mention your interest to your leader or call the Extension Office and leave a message so that when the Committee holds the evaluation meeting, they can place your name, or your suggested candidate's name, on the ballot. **Teens hold one-year terms, but other representatives hold three year terms.** We are looking for people who are committed to attending the (up to) **six** meetings that are held annually. The Committee prefers that candidates attend the Annual Meeting so they can stand to be recognized and give a brief bio and explanation of interest. Please forward any names that you may have to your leader or the Extension Office at 873-2129.

## \*\* SMALL MARKET ANIMAL MEMBERS \*\*

### AUCTION PREPARATIONS

Below is the rotational schedule that was agreed upon at the last Small Market meeting. The refreshments served to buyers at the auction this year will be cookies, brownies & bottled water.

YEAR	PICTURE SET UP	RECEPTION	TEAR DOWN/CLEAN UP
2017	Hunny Bunnys/ Showy Chevons/ Wings & Waddles	Pen Pals/ Kips Kids/ Furry Friends	Country Beefmen/ Backyard Critters

All parents are expected to continue to pitch in at the barn getting the animals ready for auction. We NEVER have an issue with this and we thank you for your hard work and citizenship!!!

**The SMAA & Junior Market Auctions will be held Saturday, August 26th  
at 5:00 p.m. in the Large Arena.**

**POULTRY:** Poultry will be pullorum tested and banded on entry day of Fair.

**RABBITS:** Rabbits must be tattooed to enter in the Fair, even if they are for show only. Pat Mackey will have a tattooer available on entry day.

**GOATS:** All sheep and goats must be identified with an USDA approved form of identification when moved. (please see full details on page 5 of this newsletter) More information can be found at: [https://www.michigan.gov/documents/mdard/Michigan\\_Sheep\\_and\\_Goats\\_Official\\_ID\\_525414\\_7.pdf](https://www.michigan.gov/documents/mdard/Michigan_Sheep_and_Goats_Official_ID_525414_7.pdf)

**NOTEBOOKS:** Please make sure your notebooks are up-to-date, neat and complete by Fair time. They are required for ALL Small Market/Junior Market Animal entries. Notebooks must be checked by the weigh master and turned in to the **4-H Building before 5:00 p.m. on Entry Day.** Be sure your exhibit card is attached to your notebook. Make sure your notebook reads 2017 on the front.

**ALL ENTRIES, INCLUDING MARKET:** As a precaution, it may be wise to check with your leader to be sure your premium statement is correct, with all entries listed according to the fair book sequence.

### JUDGING/SHOWING TIMES

Wednesday, August 23rd - 8:30 a.m.	Beef	Large Arena
	Young Beef & Feeder Calf to follow	
Thursday, August 24th- 9:00 a.m.	Goats	Small Arena
10:00 a.m.	Rabbits	Rabbit/Poultry Barn
Friday, August 25th - 9:00 a.m.	Poultry	Rabbit/Poultry Barn

All exhibits will be judged for top quality and against a standard of excellence. Remember, the judge's decision is **FINAL and good sportsmanship is EXPECTED!**



## CLEANLINESS OF ANIMALS—AUCTION

All Small Market Animals are expected to be spotlessly cleaned and groomed for the Auction, this includes rabbits, poultry, goats, young beef, and feeder calves. 4-H youth are responsible for cleaning the cages/pens of their animals. A time schedule will be set up for clubs and individuals. Remember that buyers will be touring the barns beginning as early as 4:00 p.m. You will definitely catch their attention with a clean animal and cage/pen. The extra effort that you put into making sure that not only your animals, but also your notebook, are as neat as possible will pay off in the long run!

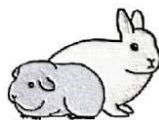
## SMAA/JR. MARKET ANIMAL AUCTION

Due to the restrictions of the MSUE staff not being able to help at the Junior Market Auction, the SMAA and Junior Market must have a clear distinction again this year. Small Market animals will be auctioned first as Junior Market went first last year. We will again have community volunteers run the Jr. Mkt. Auction. Thank you to the volunteers helping to make this happen. When the Small Market is over, we will immediately begin the Junior Market Auction. Please remember to bring any cages and wagons that you may have available to use.



### RABBIT & CAVY CAGES

Be aware that the cages have wire bottoms so if you are bringing a cavy and would like a solid bottom to your cage you need to bring something with you.



### STALL/ PEN/ CAGE SPACE

The Barns are quite full again this year. Your leader requested space for your 4-H projects. *If you requested multiple cages or pens, or additional cages/pens as open, you will be notified by the superintendent and/or your leader if there is not enough space for everything requested.*

## DO YOU HAVE A PROPOSED RULE CHANGE FOR THE 2017/2018 SMALL/JUNIOR MARKET PROGRAM?

The 4-H Small Market Committee will hold its annual fair and program rules evaluation meeting in late September. This is the only time that changes to the 4-H Small Market program are made. If you have an idea or suggestion for changes and improvements, please talk to your leader or superintendent and send it in writing to the Extension office to be considered by the committee. Please note that ALL CHANGES ARE FINAL by the time of the Annual Meeting.

The current Small Market Committee consists of:

**Dolphie Eisenlohr**  
**Melanie Sayles**  
**Mikayla Hepworth**

**Jill Rockwell**  
**Heidi Bromley**  
**Mikaylyn Kenney**

**Audrey Herremans**  
**Kim Eubank**  
**Hollis Rockwell IV**

**Consider adding YOUR name to the ballot this fall to be part of the change!!!**  
**Contact the Extension Office at 231-873-2129 for additional details.**



## ALL MARKET ANIMALS—LARGE AND SMALL

**ANTIBIOTIC FREE STATEMENT REQUIREMENT:** This requirement is requested by one of the packers we use for the 4-H animals. Your leaders were provided with this form at the leader/superintendent meeting. We also have them in the office if needed. **These forms will need to be turned in on Tuesday, August 22nd (Entry Day) IN YOUR BARN!**

**4-H INFORMATION CARD:** Once again, we will be using the Market Livestock, 4-H Small Market Animal Member Information/Jr. Market cards during the auction. These were also given to your leaders. Please take a few minutes to complete the card as neatly as possible, and turn it in on **Entry Day IN YOUR BARN**. These cards will be used to announce members during the auction. The neater, the better!!

**DO NOT TURN YOUR CARDS IN TO THE EXTENSION OFFICE,  
THEY NEED TO BE TURNED IN TO YOUR BARN ON ENTRY DAY.**



### WORKBEE NIGHT

Workbee night is scheduled for  
Monday, August 21st  
beginning at 6:30 p.m.

In the hog barn-no pens will be assigned before the superintendent arrives. In other barns, please check with your leader or superintendent.

### PEN/STALL CLEANING

Please remember that all 4-H Market Livestock members must have their animal pens/stalls cleaned before 9:00 a.m. each day the Fair is open. This is a requirement of the project and if not completed each day will result in possible premium forfeiture and additional penalty.



## ANIMAL RELEASE TIMES

Release time for the Market Livestock Animals will be the morning of Sunday, August 27.

**NO EXHIBIT WILL BE RELEASED BEFORE SUNDAY !!!**

Please check with your barn superintendent, leader, or Hollis Rockwell to confirm the time your animal is scheduled to leave.

All manure and bedding will need to be removed from the barn at the conclusion of the Fair. If you neglect to clean your stall after release of your animal, you may forfeit your premiums.

## OPEN CLASS ANIMALS REQUESTING TO RIDE HAULING TRUCKS

If you have an open animal (or an animal that did not make weight and stayed at the fair) that you would like taken to a processor or Ravenna Livestock for reselling, please see Hollis Rockwell, in the beef barn, by noon on Friday for a loading pass. There will be a small charge for this service. Cost is as follows: Steers- \$14.00, Feeder Calf- \$10.00, Swine - \$8.00 and Lambs- \$6.00. (*Prices may vary slightly*).

**NO LOADING PASS — NO RIDING!!**



**REQUIREMENTS FROM MICHIGAN FAIR & EXHIBITIONS MDARD****Michigan Department of Agriculture 2017 HEALTH REQUIREMENTS  
& Rural Development (MDARD) GENERAL REQUIREMENTS**

Requirements for all animals may be found at the Animal Industry Division at

**[www.michigan.gov/mda-exhibitinfo](http://www.michigan.gov/mda-exhibitinfo)**

(800) 292-3939

**REVISED January 2017 (Replaces All Previous Editions)**

**All Sheep**

1. All sheep shall be identified with official USDA scrapie program identification tags.

Official ID is:

- a. USDA Scrapie Tag: Free scrapie tags are available through the USDA Michigan office at 517-337-4705.

- b. Legible Tattoo:

i. Scrapie Flock ID with individual animal tattoo.

- c. Use of microchips is strongly discouraged. There are many requirements to use a microchip as the sole official ID. For more details contact the USDA Michigan office.

2. Do not remove tags prior to weigh-in or showing. It is illegal to remove official USDA individual animal identification.

**All Goats**

1. All goats shall be identified with official USDA scrapie program identification tags.

Official ID is:

- a. USDA Scrapie Tag: Free scrapie tags are available through the USDA Michigan office at 517-337-4705.

- b. Legible Tattoo: There are two types of acceptable forms of tattoos
- i. Official breed registration tattoo (registry certificate listing tattoo must accompany animal).
- ii. Scrapie Flock ID with individual animal tattoo.

- c. Use of microchips is strongly discouraged. There are many requirements to use a microchip as the sole official ID. For more details contact the USDA Michigan office.

2. Do not remove tags prior to weigh-in or showing. It is illegal to remove official USDA individual animal identification.

**\* FOR MORE INFORMATION AND FOR ANIMALS BEING BROUGHT IN FROM OUT OF STATE AND MORE COMPLETE DETAILS PLEASE SEE MDARDS FAIR AND EXHIBITION WEBSITE**

**OCEANA COUNTY FAIR VET**

Thank you to Dr. Sarah Velat for agreeing to be the veterinarian for the Oceana County Fair. Sarah is usually found on the Fairgrounds with her own club and the committees thank her very much for volunteering her time and expertise.



**ALL ANIMAL EXHIBITORS**  
**CHECKLIST FROM MICHIGAN FAIR & EXHIBITIONS MDARD**  
[www.michigan.gov/mda-exhibitinfo](http://www.michigan.gov/mda-exhibitinfo)

**HORSES:**

- ☐ Proof of negative test for Equine Infectious Anemia (Coggins Test) within the last 12 months, except foals under six months of age and nursing their dam
- ☐ Interstate certificate of veterinary inspection if coming from out of state.
- ☐ Must be identified via a complete description, electronic identification, or digital photograph if coming from out of state

**GOATS:**

- ☐ Must be identified with official United States Department of Agriculture (USDA) scrapies program identification
- ☐ Interstate certificate of veterinary inspection if exhibitors are coming from out of state
- ☐ Must meet tuberculosis and brucellosis testing requirements if coming from out of state

**SHEEP:**

- ☐ Must be identified with official USDA scrapie program identification
- ☐ Interstate certificate of veterinary inspection if exhibitors are coming from out of state with appropriate statements

**SWINE:**

- ☐ Must be identified with official USDA identification ear tag
- ☐ Swine at a fair, exhibition, exposition, or show authority facility with a fever >105°F is reportable to the Michigan Department of Agriculture and Rural Development (MDARD)
- ☐ Interstate certificate of veterinary inspection if exhibitors are coming from out of state
- ☐ Must meet pseudorabies and brucellosis requirements
- ☐ No Russian Boars (*Sus scrofa* Linnaeus) and hybrids of Russian Boars can be imported or exhibited

**POULTRY:**

- ☐ Meet pullorum testing requirements
- ☐ If birds come to the fair untested for pullorum, they must test negative for *Salmonella* pullorum-typhoid before being caged and housed with other poultry.
- ☐ Interstate certificate of veterinary inspection if exhibitors are coming from out of state
- ☐ ILT vaccinated poultry may not be imported to Michigan
- ☐ Do not share feed and water containers between birds in different enclosures

**CATTLE:**

- ☐ Must be identified with official USDA ear tag ■ For Michigan cattle this is RFID ear tag

**\*FOR ANIMALS BEING BROUGHT IN FROM OUT OF STATE & TO SEE  
COMPLETE REQUIREMENTS ON MDARDS FAIRS & EXHIBITIONS SITE**





## HORSE INFORMATION



### GOOD LUCK TO STATE HORSE SHOW DELEGATES!!!!

The following 4-H-ers will be competing at the state horse show, August 11-13, 2017

**Caitlin Coppess, Madelyn Meacham & Hannah Riggs**

-----  
The Horse Superintendent's office is located at the West end of the draft horse barn.

**Please enter ANY class that you "THINK" you might want to be in...**

It is easier to scratch a class later than to try to add it.

Watch in the horse barns for posted schedules, etc.

Please remember that you are responsible for cleaning your horse stall before 9:00 a.m. daily. When Fair visitors come through, they will be impressed by your cleanliness. NO blacking of hooves in aisle way. Please bring a board and take your horse outside. Also, please keep all lawn chairs and tack out of the aisles. To maintain open aisle ways, please keep your horse moving to the exit when leaving your stall. Visitors may ask questions in order to learn more about 4-H or horses in general. Please be polite and if you do not know how to answer their question, get your leader or another adult who may be able to help.

After Wednesday's classes and also after the costume class on Friday, everyone needs to help clean up the ring.

Please look for the exercise schedule and list of barn rules at both ends of the barns. We hope that everyone will follow both. Also, there will be NO horses out of the barns *after 5:00 p.m.* unless a 4-H Horse event is scheduled.

You **MUST** clean up after your horse at all times. It does not reflect well on any of us that visitors to the fair have to walk around piles that have been left on sidewalks and walkways. We have not had any complaints the past few years, let's keep it that way!

Everyone needs to make sure they clean up their gathering/sitting area and properly dispose of all trash.

**"Leave where you have been, better than you found it"**

All 4-H Project members **MUST** present their project notebook for examination of content & points at the time that your entry cards are turned in.

Let's try to be helpful to one another and congratulate each other for our efforts & successes.

**Good sportsmanship is not something that we hope you will exhibit,  
it is something that is EXPECTED—PARENTS TOO!**

We are required to display the Equine Liability signs. These signs must be displayed and visible at all times. Please make sure they are up and not removed.

**ALL RIDERS MUST DISMOUNT BEFORE LEAVING THE BEEF (LARGE) ARENA. IF YOU ARE NOT IN THE MAKE-UP AREA OR IN THE RING, YOU WILL NOT BE ON YOUR HORSE. YOU WILL BE ASKED TO DISMOUNT AND IF YOU DO NOT, YOU WILL LOSE PREMIUMS AND MAY BE ASKED TO LEAVE THE GROUNDS. YOU MUST ALSO WEAR APPROPRIATE BOOTS/FOOTWEAR & HELMETS. THIS IS A SAFETY ISSUE AND A RULE.**

A valid Negative Coggins Test must be on file in the MSU Extension Office before entry day.

No trailers may be left on the Fairgrounds for the duration of the Fair.

## **GENERAL 4-H INFORMATION**

### **BUILDING SUPERINTENDENTS . . .**

Superintendents are the special people who are in charge of a specific building at the Fair. If you have any questions, please contact them. If you do not fulfill your responsibilities to your building or barn; and don't keep everything cleaned up or display a bad attitude, the building superintendents have the authority to pull your premiums, withholding your monies. You may also risk not being allowed to attend next year's Fair.

### **SUPERINTENDENTS**

4-H Youth Exhibit Building	Becky Freeman	↑	Draft Horses	Terry Kidder
Beef Barn	Hollis Rockwell, III	↓	Poultry	Ted Gilmore
Dairy Cattle	Heidi Bromley		Rabbits	Pat Mackey
Goats	Kip Cole		Sheep	Lindsey Merten
Light Horses	Connie Cargill		Swine	Phil Carter

### **PREMIUM CHECKS**

The Oceana Agricultural Society has asked us to let you know that if you are not going to cash your premium checks in the allotted time, and would prefer to donate the monies back to them please check the:

#### **DONATE BACK**

line on your premium sheet. It is right under your address. It costs them to reissue checks and unclaimed checks must be turned over to the state so if you want the funds to stay with them make sure to check this box. Thank you.

### **COMPLAINTS & CONCERNS**

If you have a concern, complaint or problem please use the following line of authority:

1. Contact your leader.
2. Your leader will contact the barn superintendent
3. Your superintendent will contact a member of the Executive Committee for your project.
4. The Executive Committee may contact the 4-H Youth Council

**PLEASE DO NOT GO TO THE FAIR OFFICE.  
WORK WITH THESE INDIVIDUALS FIRST.**

### **REMINDER - NO FOOD/DRINK OR POTLUCKS IN THE BARN**

Following recommendations from the Michigan Association of Fairs and Exhibitions (MAFE) and the Federal Centers for Disease Control (CDC) there will be **no food, drink or potlucks in the barns or buildings. Make sure keep food & drink outside.**

All 4-H fair exhibitors are considered ambassadors for their project areas and as such, bear a civic responsibility to educate fair patrons as the opportunity arises.

Exhibitors are role models, expected to model behavior that reinforces quality animal care and execute biosecurity prevention measures to the best of their ability. Clubs are encouraged to utilize the space by the Youth Exhibit Building for their community gatherings.



## FEEDING AMERICA

Don't forget that this year, the Oceana county Fair's livestock auction supporters have the option of helping out families in need by purchasing an animal who's meat will go to families in need!



Through Feeding America's Grand Champion Giving Program, buyers have the option of donating an animal to Feeding America West Michigan.

The food bank covers all transportation, slaughter, and processing costs of the donated livestock which the buyer would typically be responsible for, and the donors receive a tax benefit. It is a great way for the buyers to further support 4-H, and help those in need!

### **2017/2018 OCEANA COUNTY 4-H AMBASSADOR(S)**



*The 2017/2018 Ambassador(s) will be announced Tuesday the 22nd at 5:30 p.m. in the large arena.*

Please try to take a minute to acknowledge your fellow 4-H members who have went above and beyond. Not only those who were awarded this recognition this year but all of those who applied, we have a great group of teen leaders in our 4-H program!

## DTE ENERGY GRANT

For this year's Fair the 4-H Program was contacted about applying for a grant that would enhance the Fair experience for our 4-Her's as well as the general public. The funds will be used to cover the buyer's receptions during the 4-H Market Livestock Auction and Small/Junior Market Auction as well as provide funding for the Ag Olympics events. These funds will benefit all three events greatly and we appreciate DTE Energy reaching out to Oceana County!



NO PLAYING,  
CLIMBING OR  
SITTING ON  
THE  
TRACTORS!!!

**THE TRACTORS ON DISPLAY AT THE FAIRGROUNDS NEXT TO THE 4-H YOUTH EXHIBIT BUILDING ARE NOT PLAYGROUND EQUIPMENT .**

**(per the Oceana Agricultural Society)  
Adults are asked to supervise all children in this area.**

## ALL ANIMAL PROJECT MEMBERS



### 4-H GRAND SLAM SHOWMANSHIP

The Grand Champion Showman in the following animal species will be entitled to compete in the Grand Slam Showmanship Competition for a trophy and monetary award from the Joyce Semelbauer Memorial Fund. (beef, dairy, horse, goat, lamb, swine, poultry, and rabbits). **Due to this being sponsored by the Oceana County 4-H Youth Council, the youth must be a registered Oceana County 4-H member in order to participate.** If the Grand Champion is not a registered 4-H member then the opportunity to compete in the Grand Slam will be offered to the Reserve Champion (and so on).

Upon being awarded the chance to compete see Pat Mackey or Ted Gilmore for details.

If you are not interested in competing, please let your superintendent know so that they may ask the Reserve Champion of your species.

- ◆ Must compete in Showmanship with all animals
- ◆ Take time to speak with and learn from exhibitors in other areas

### 5-8 year old EXHIBITORS with animals

**The Oceana County Fair Board follows the State 4-H Cloverbud guidelines for 5-8 year olds. This is for ALL animal project animals whether it is dairy, swine, beef, poultry, rabbits, etc.**

#### **This policy states:**

- ◆ Children aged **5 & 6** may be involved with animals on **halter & lead** but they must be directly assisted one-on-one by a parent, guardian or adult volunteer who is on the ground **holding the animal's halter or lead** to maximize safety.
- ◆ Those who are **7 & 8** may be involved with animals **on a halter & lead**. They must be assisted by either a parent or another adult or older youth volunteer who is **on the ground holding the halter & lead**.
- ◆ When **5 & 6** year olds are working with **horses**, assistance must be provided by adults on foot, rather than mounted on other horses.
- ◆ Children aged **5 & 6** may be involved with **non-halter** animals such as swine, chicken & rabbits. Again, each must be directly assisted one-on-one by a parent, guardian or adult volunteer while the child is in contact with the animal.
- ◆ In the 4-H horse project, walk trot experiences may be an appropriate activity for children in this age group, with adult volunteers in the ring with the children at all times.

Full Cloverbud rules can be read at:

<http://4h.msue.msu.edu/uploads/resources/4-HCloverbudPolicy.pdf>

**This was explained in your rules and guidelines that you were presented with when you registered for the project and was sent to the Market Project judges in their pre-fair packet. See copy on pages 22 & 23 of this newsletter!**

---

## 4-H GENERAL INFORMATION

---

### FAIR PASSES

There are several different passes available. All passes will be issued at the North End of the 4-H Exhibit Building on ENTRY DAY ONLY. You will not be allowed to cut through the Building, you must walk around. You will need to obtain a pass to get in the Main Gate in one of the following ways:

1. Livestock Exhibitor Pass  
Issued only to those that must take care of their animals everyday
2. Youth Pass  
Available for all 4-H youth building exhibitors- **\$3.00/pass**
3. 4-H Leader Pass/Parent Pass  
Available for all enrolled 4-H Leaders and Parents of Exhibitor- **\$6.00/pass**
4. Daily Pass  
For clerks and "Building Watch" volunteers (not needed if you have one of the above passes) This pass is free because you are volunteering your time for building watch.
5. Barn Loading & Unloading Permits  
There will be one per family. There will be a sign-in system to make sure only one is issued per family



**ALL PASSES ARE AVAILABLE ONLY ON TUESDAY, AUGUST 22, 2017**  
**UNTIL 5:00 p.m. NO PASSES WILL BE ISSUED AT ANY OTHER TIME.**

**BARN LOADING AND UNLOADING PERMITS WILL BE ISSUED**  
**ON TUESDAY ONLY.**

---

### THINGS THAT YOU WILL NEED FOR THE FAIR

1. 2017 Fair Premium Book (1 per family)
2. Premium Statement (1 per Youth Exhibitor)
3. Fair Youth Exhibit Tags– One for each class/exhibit entered. Use only one exhibit tag even though 3 articles may be required in a class. Please use complete mailing address, including city. The exhibit tags for Department of Youth are green in color.
4. Stall Card for Market Livestock Animals– available from your leader
5. Stall Card for Small Market Animals– available from your leader
6. Tab Sheet for Horses– available in the MSUE office or possibly from your leader.

Everyone: If you haven't spent a few minutes reading the Fair Book, do so before filling out your exhibit cards. An exhibitor may receive a B or a C ribbon, or even be disqualified, instead of an A because rules were not read carefully and followed. Please double check your cards.

**PREMIUM CHECKS will either be mailed, or if you are a market project member, attached to your buyer's picture along with reenrollment paperwork.**

---



---

## 4-H GENERAL INFORMATION

---



### **VOLUNTEERS NEEDED- HELP OUR FAIR RUN SMOOTHLY!**

***Please help in any way that you can, for however long as you can!!!***

Volunteers are needed each year to help in various areas during the Fair.

In the 4-H Youth Exhibit Building help is always needed. The building superintendent, will be seeking help with building watch throughout the duration of the Fair. Our Light Horse Superintendent will be looking for help, from horse club members and parents, during the horse showing classes as well. Some specific areas in need of help are listed below. Even if you can only give an hour of your time we appreciate it!

### **4-H BUILDING WATCH: *We need everyone to sign up for at least one 1 hour shift.***

Remember that notebooks are kept in the building along with the Youth exhibits, so we need EVERYONE to volunteer for at least one shift. Please call the MSU Extension Office to volunteer for the time convenient for you by August 18, 2017. ***After this date, we will make assignments to clubs and it will be the leader's responsibility to recruit parents.*** The building WILL BE CLOSED for any hours not covered.

### **RESPONSIBILITIES INCLUDE:**

- Watch over the building and it's contents
- Be available to answer Fair patron questions
- Represent 4-H with a friendly face
- Encourage new members to enroll in 4-H

**4-H WORKBEE:** This is held on Monday, August 21st at 6:30 p.m. at the Fairgrounds. **We will offer a non-club point for helping the morning of Monday, August 21st when moving things to the Fairgrounds in the morning. Heavy lifting will be involved, so please take this into consideration if you are volunteering. If you are interested in helping on this day, please call the MSUE Office by Wednesday, August 16.** On Monday, the 21st, Workbee night, Non-club points may be earned by jobs assigned from Superintendents or Extension Staff **but will apply to the 2018 Fair.**

***There will be NO non-club points given out after noon on the 21st that apply to this year's Fair.***

**CHECK-IN:** We need adults to help on entry day, Tuesday, August 22nd, checking people in and placing exhibits in the 4-H exhibit building. The more help we have, the shorter the lines and quicker everyone gets done. Please volunteer some time to help kids setup their exhibits. 4-H members may also volunteer to help place exhibits.

**CLERKS ON JUDGING DAY:** Wednesday, August 23rd from 8:45 a.m. until finished. Clerks work with the judges in specific areas stapling ribbons on exhibits and writing the judge's comments. **We need one adult and one teen for each judge. They are not involved in the actual judging**

**CLEAN-UP AND STORAGE:** On Sunday, August 27th we will need help cleaning the buildings and putting things away for next year's Fair.

**LET'S SEE EVERYONE PITCH IN AND HELP! EVERYONE SHOULD SIGN UP FOR SOMETHING. WE NEED EVERYONE'S HELP! THANKS!**

---



## THE BIG DAY– ENTRY DAY

### TUESDAY, AUGUST 22, 2017 FROM 9:00 A.M.- 5:00 P.M.

#### REMINDERS:

1. All youth will enter their exhibits, at the south end of the 4-H Youth Exhibit Building.  
All 4-Her members must register with 4-H numbers. (See June/July newsletter for numbers)  
All open youth, including the 5-8 year olds, non 4-H (except for horse entries), will register at table right outside the front entrance to the 4-H Youth Building.
2. All exhibits MUST be entered by 5:00 p.m. on Entry Day.
3. Exhibits may not be removed until Sunday, August 27th. Please check with your building superintendent for the time your exhibits will be released on Sunday.
4. You may only enter exhibits that have NOT been entered in our Fair or any other Fair before. Items or exhibits that you made this year are those eligible for entry. Items from last year or any previous year are NOT eligible (this excludes animal projects).
5. Fill out both the top and bottom of the Fair Youth Exhibit Tag.
6. Where possible, attach the exhibit tag to the exhibit. Identify all exhibits with the name of 4-Her by using masking tape, etc.
7. There are no entry fees in the Department of Youth, 4-H or open.

Each youth must fill out a Premium Statement. This statement lists the total exhibits entered by any one person. All classes in the Fair Book are listed in consecutive order and that is how the Premium Statement should be listed to the best of your ability.

A. Fill out only parts 1 and 2

B. If you have a 2017 Fair Book, complete your exhibit cards (green) and put them in the correct sequence. You will then transfer the class information onto a premium sheet. Keep them in numerical order to the best of your ability to make it easier for those paying the premiums after Fair.

C. If you don't have a 2017 Fair Book, there will be people available on Entry Day to assist you. Books are also available in the MSUE office and as a pdf on the Oceana County Fair website at [www.oceanafair.com](http://www.oceanafair.com)

### NOTICE SOMEONE GOING ABOVE AND BEYOND?

*Nominate them for an award!!!*

#### YOUTH

- **MI 4-H Sportsperson of the Year**
- **John Sayles Memorial Award**
- Mention it to a club leader  
for **Fall Awards nominations**

#### ADULTS

- \* **MI 4-H Sportsperson of the Year**
- \* **John Sayles Memorial Award**
- \* **Youth Council Volunteer Awards**  
Lifetime Achievement, Horizon,  
Mentor, Service, & Sportsmanship

## 4-H GENERAL INFORMATION

### WHAT NUMBER SHOULD I USE???

#### 4-H vs. Youth (Y) Exhibitor Numbers

##### 4-H Number

- Market Livestock Member (Large or SMAA)
- 4-H Member, age 9 or older, with non-animal exhibits
- 4-H Member, ages 5-8, PARTICIPATION RIBBON ONLY

##### Y Number

- Not a 4-H Member
- 4-H Member, ages 5-8, wishing to COMPETE (A, B, C ribbons), this includes ALL JUNIOR MARKET participants

Whichever number is used, it must be consistent throughout ALL entries at Fair. You can not enter some classes for competition and some classes for participation. If you have any questions on which to use, call the MSUE office at 873-2129 and we can help you figure it out. These numbers were included with the last newsletter. If needed, you can find the old newsletters on our website at <http://msue.anr.msu.edu/county/info/oceana> - click on the newsletter link.

## ACTION DEMONSTRATIONS

Additional premiums are awarded to those who share a 4-H experience with others. You can demonstrate something you have learned or tell about an exciting 4-H experience you had during 4-H Exploration Days, Folk Festival, any type of cultural skill, holiday celebration, food and games, etc.

Remember that these do not need to be long. For the younger 4-Hers, 3-5 minutes is fine. It will be difficult to hold an audience for anytime longer than 4-10 minutes. Also, remember that a good demonstration consists of:

1. A clear introduction
2. The Main Content-the actual information
3. A clear ending- wrap up everything

Demonstrations will be done under the tent on the west side of the 4-H Youth Exhibit Building.

EACH DEMONSTRATION MUST BE ON ONLY ONE PREMIUM STATEMENT, REGARDLESS OF HOW MANY 4-HERS ARE PARTICIPATING. YOU MUST INDICATE WHETHER OR NOT IT IS AN INDIVIDUAL OR GROUP DEMONSTRATION. YOU ALSO NEED TO HAVE SOMETHING TO PUT ON A DISPLAY ON ENTRY DAY WITH YOUR EXHIBIT CARD ATTACHED INDICATING YOUR DEMONSTRATION.






Demonstrations are listed under Educational Exhibits in the Fair book. It is the last item to add to your premium statement. You must have something on display in the 4-H Youth Exhibit Building such as; posters, pictures, etc. on Entry Day to qualify for a premium. The demonstration times are as follows:

Thursday, August 24

5:30-7:00 p.m.

If you have any questions please do not hesitate to contact the Extension Office or talk with your leader. The sign up sheet is posted on the door at the office.

## GENERAL YOUTH EXHIBIT BLDG INFO

<p>4-H EXHIBIT BUILDING ENTRIES</p>	<p style="text-align: center;"><b><u>CRAFTS &amp; OTHER PROJECTS:</u></b></p> <p>Place non-perishable exhibits in plastic bags to keep them clean (knitting, crocheting, clothing, etc.). Use a twist closure or zip locks (no scotch tape) so they can be opened for judging. If you have small items, place them together. 4-Her's must provide their own hangers for clothing.</p>
	<p>ALL entries in Department FF, ARTS, are <b>REQUIRED</b> to be mounted.</p> <p>Stories, if the cover is not cardboard, should be mounted on cardboard also.</p>
	<p><b><u>FRUITS &amp; VEGETABLES:</u></b></p> <p>For guidelines on selecting and exhibiting fruit and vegetables, use 4-H bulletin #1175.  <a href="http://msue.anr.msu.edu/uploads/236/67126/4H1175_SelectVegforExhibit.pdf">http://msue.anr.msu.edu/uploads/236/67126/4H1175_SelectVegforExhibit.pdf</a></p>
	<p>The bulletin will tell you such things as whether you need to cut the green part off of carrots and how to display your produce. <b>Plastic bags should not be used for fresh fruits and vegetables as they need air circulation.</b> All exhibits should be placed on paper plates with exhibit tags stapled to the plate. Use double plates for larger, heavier fruit and vegetable exhibits. Be sure to check the Fair Book and the 4-H bulletin to be certain of the way and numbers of fruits and vegetables that must be displayed.</p> <p><i>Exhibitors have been, and will be, disqualified if they do not have the correct number of vegetables/fruit on a plate. The judges look at this closely.</i></p>
	<p><b><u>You may not enter the "any other" category if you already have that fruit or vegetable in a class. You may not have two classes of the same variety!</u></b></p> <p><b><u>FOOD ITEMS:</u></b></p> <p>Recipes must be submitted on a 3" X 5" card with all baked goods. Make sure that all baked goods are cool before wrapping or placing in a plastic bag. <b>Fun with Food</b> items must be submitted with a 3" x 5" card with directions/ explanation of what your creation is and how you made it.</p>
	<p><b><u>FASHION REVIEW:</u></b></p> <p>If you are enrolled in a sewing, crocheting or knitting club, you should enter the Fashion Review. It is a great experience to model the article that you have made. There will be a place you can dress in the 4-H Exhibit Building. The Fashion Review will be included with the ACTION DEMONSTRATIONS. See the superintendent on entry day for the assigned time. You must be signed up by 5:00 p.m. on Entry Day to be included.</p>

**NO MEETINGS FOR YOUTH COUNCIL & HDC**  
**during the month of August. See you all in September.**

**WE HOPE THAT EVERYONE HAS A FUN AND SAFE FAIR!**  
**YOU HAVE ALL WORKED VERY HARD, ENJOY IT!!!**

---

## 4-H GENERAL INFORMATION

---

### “KEEPING KIDS SAFE!”

It is the responsibility of those involved with MSU Extension 4-H Youth to do all we can to ensure that the young people in our programs are treated with respect and dignity, and are provided with safe, caring environments in which to learn and have fun. All 4-H staff, volunteers, parents, grandparents and guardians who work closely with young people, have the potential to profoundly affect the well-being of children. This not only applies to their physical health, but their mental health, also.

If you see negative behavior on the part of a young person, don't wait for someone else to step in, whether or not they are in your club or are your child. 4-H is the village that is raising kids in a safe, encouraging environment. Please use positive approaches when correcting behavior. Give kids a congratulations when they have achieved their best and encouragement to try harder to those who are not happy with their accomplishments.

In your role as the adult at a 4-H event, please keep the following in mind:

- \* Be a positive role model and lead by example! Let your behavior reflect the widely used CHARACTER COUNTS six pillars of character that 4-H believes in: trustworthiness, respect, responsibility, fairness, caring and good citizenship.
- \* Keep in mind, just as it takes a village to raise a child, it takes all the adults at an event to contribute to a positive experience for the participants. Provide support, guidance and feedback to all the young people who are present.
- \* Communicate regularly with participants and use the language of the six pillars of character in you interactions. Point out examples of positive behaviors in action (for example, recognize good behavior as being respectful and caring of others).
- \* Be familiar with the Michigan 4-H Youth Development “Conduct Policy,” which is: *Positive behavior is a key expectation for youth and adults participating in 4-H activities-behavior that reflects trustworthiness, respect, responsibility, fairness, caring and citizenship. Participants are expected to follow all rules and guide-lines. Theft, vandalism, the use of illegal drugs and alcohol, inappropriate or threatening behavior that violates the rights of others, and other such offenses are strictly prohibited, and anyone involved with these offenses will immediately be dealt with in the appropriate manner. If it is determined by 4-H staff or persons in charge, that the offense warrants it, the offender will be turned over to the proper authorities.*



### USE THE “BUDDY SYSTEM” AT ALL TIMES

Part of keeping kids safe is making sure that the “Buddy System” is always used.

It is just as important during the day as it is at night, but especially at night.

The more people in a group, the less likely anyone with ill intentions will approach.

---

## THE OFFICIAL Michigan 4-H Youth Code of Conduct

**ALL 4-H PARTICIPANTS SIGN THIS CODE OF CONDUCT ANNUALLY WHEN ENROLLING IN 4-H. YOUTH ARE REQUIRED TO OBSERVE THIS CODE FOR ALL 4-H EVENTS INCLUDING THE OCEANA COUNTY FAIR.**

Participation in Michigan 4-H programs is subject to the observance of the program rules.

**\*Any participant who knowingly violates this code of conduct is subject to discipline, up to and including removal from the activity he or she is participating in (at his or her own expense) or the entire county 4-H program.**

Determination of disciplinary action shall be done with input from the volunteers and staff overseeing the program or activity. Final decisions about discipline will be made by the MSU Extension staff.

Michigan 4-H members will:

- ◆ Show respect for, and cooperate with, fellow members, volunteers and staff.
- ◆ Follow 4-H policies and procedures when participating in any 4-H-sponsored event.
- ◆ Under no circumstances, commit or threaten violence toward any individual, group or the program.
- ◆ Under no circumstances, possess, sell or consume alcohol, tobacco, or any controlled substances at an MSU Extension 4-H youth activity or event.
- ◆ Under no circumstances, attend or participate in an MSU Extension 4-H youth activity or event under the influence of alcohol and/or controlled substances (including tobacco, electronic cigarettes, etc.).
- ◆ Under no circumstances, bring dangerous or unauthorized materials (such as fireworks, explosives, weapons or similar items) to an MSU Extension 4-H youth activity or event.
- ◆ Abstain from hazing, harassment or bullying of another participant, volunteer or staff member (either in face-to-face interactions, through social media or other communication venues), particularly when the behavior is based on a person's appearance, race, color, national origin, gender, gender identity, religion, age, height, weight, disability, political beliefs, sexual orientation, marital status, family status or veteran status or other protected category under the University's Anti-Discrimination Policy.
- ◆ Not cheat or falsely represent efforts related to 4-H project activities.

### THE ROLE OF A 4-H PARENT

- ◆ I accept my responsibility to represent Michigan State University Extension 4-H Youth Development program by holding myself to the standards of the 4-H pledge and motto. I will refrain from behavior that negatively represents myself, my family, my community, 4-H or Michigan State University Extension.
- ◆ I acknowledge that the 4-H program utilizes competition related to project work as a tool for learning. I will ensure that the project exhibits created by my children are appropriate and respectful. I will demonstrate good sportsmanship, encourage this behavior in my child(ren), and not allow this to detract from the learning experience. I will not let my personal desire to win overshadow the needs of my child(ren) or violate positive youth development principles.
- ◆ I accept my personal responsibility to be informed and follow the policies, rules, and deadlines established by Michigan 4-H. I will not cheat, lie, knowingly furnish false information, deceive, or otherwise engage in dishonest, unethical or illegal behaviors. I will not encourage others to disregard or intentionally violate conditions of Michigan 4-H participation.
- ◆ I will act in a respectful and responsible manner during all 4-H programs. I will comply with directions of 4-H officials acting in the performance of their duties. I will not obstruct or disrupt any 4-H program or encourage others to engage in such conduct. I understand that a judge's decision is final.
- ◆ I will promote a spirit of inclusion and welcome participation of individuals from all backgrounds. I will practice fair-mindedness by being open to ideas and opinions of others. I will comply with equal opportunity and anti-discrimination laws. I will not participate in behaviors that discriminate against other people.



Michigan 4-H  
Youth Development  
Michigan State University  
Extension



## 4-H Cloverbud Program Policy Information

“Participation, safety, personal development and learning are the highest priorities for involvement in 4-H.”

### Introduction

Participation, safety, personal development, learning and fun are the highest priorities for Michigan 4-H Youth Development in providing cloverbud programs for 5- to 8-year-olds. The policies outlined in this document seek to ensure that 4-H cloverbud members remain safe and have positive, developmentally appropriate experiences in 4-H.

Determination for developmental appropriateness rests with 4-H staff members, supported by Michigan State University Extension.

### Program Name

County 4-H programs are asked to use the name “4-H cloverbuds” when identifying 4-H members aged 5 to 8. Even if a county 4-H program chooses to use a different name for members in this age group, the county 4-H program still must follow the policies established for Michigan 4-H cloverbuds.

### Participant Age

Children aged 5 to 8 on January 1 of the 4-H program year are 4-H cloverbud members.

### Enrollment

Leaders will complete 4-H member enrollment forms for 4-H cloverbud members. On the form, the club name and number should be that of their 4-H club (for example, Trail Blazers 4-H Cloverbuds or Busy Bee 4-H Cloverbuds). The **project code** for 4-H cloverbuds is **FD: Introductory 4-H Projects**. This is the code for recording the involvement of 5- to 8-year-olds on the federal ES-237 statistical report. Counties may use additional tracking methods in the Blue Ribbon software program to record members' specific interest areas.

### Learning Experiences

Children aged 5 to 8 need to be involved in activities and learning experiences that are developmentally

appropriate. Children in this age group typically are full of energy and willing to learn, and need educational materials designed for their specific abilities, needs and interests. In addition, activities and learning experiences should be geared to the informal settings offered by 4-H. Research indicates that competition at this age is not developmentally appropriate. It is important that 5- to 8-year-olds be involved in activities where the risk of failure is minimized and the opportunity to experience success is maximized. Educational programs for 5- to 8-year-olds should focus on cooperative learning. The participation and learning of the child should be the ultimate goal.

### Curriculum

The curriculum used in 4-H cloverbud activities must be developmentally appropriate. The *Michigan 4-H Cloverbud Resource Box* offers more than 75 age- and developmentally appropriate activities. Theme areas in the box include plants and animals, citizenship, service learning, healthy lifestyles, environmental and earth science, consumerism and family science, science and technology and more. For more 4-H cloverbud resources, visit the following curriculum and educational resource sites:

- Montana 4-H Cloverbud Clubs (<http://www.montana.edu/www4h/cloverbuds.html>)
- Ohio 4-H Cloverbud Connections (<http://cloverbudconnections.osu.edu/>)
- National 4-H Cooperative Curriculum System (<http://www.n4hbcs.org/>)
- Minnesota 4-H Policy (<http://www.fourh.umn.edu/staffonly/policy/#mn4h>)
- Pennsylvania 4-H Cloverbuds Curriculum (<http://pa4h.cas.psu.edu/Curricula/Cloverbuds.html>)
- Missouri 4-H Clover Kids (<http://4h.missouri.edu/go/Cloverkids/>)



“The participation and learning of the child should be the ultimate goal.”

### Participation in 4-H Activities

It is important that a parent or adult or older teen volunteer be with cloverbud members while they participate in 4-H activities at all levels. The recommended ratio is one adult or older teen for every six children. Some activities may require a higher ratio of adults or older teens to children. For example, animal activities require a 1-to-1 ratio. Cloverbud members may participate in 4-H at the local, county, regional and state levels in the following ways:

- **At the local level** – Cloverbuds may participate through authorized 4-H delivery systems such as community clubs, project clubs and special interest groups. Activities may include meetings, community service activities, tutoring, recreation and tours.
- **At the county, regional and state levels** – Cloverbuds may participate in noncompetitive, age-appropriate activities that are designed for this age group. These activities may include day or resident camps, workshops and clinics.
- **State 4-H workshops and events** – Refer to specific workshop and event announcements for age guidelines.

### Cloverbuds & Animals

Cloverbuds often do not own the project animals that they work with in 4-H educational experiences. Animals used during the year at club events and meetings can be brought in or shared by older members to help cloverbuds become accustomed to working with animals.

Age- and developmentally appropriate activities or topics that could be explored in learn-by doing experiences include:

- Identifying species, breeds, parts and tracks of animals
- Recognizing differences between animals
- Constructing the ideal animal
- Selecting and identifying equipment
- Observing animal behavior
- Learning livestock terms
- Determining an animal's age
- Exploring a veterinary clinic
- Grooming an animal
- Identifying products from animals
- Exploring what animals eat

- Touring a feed store
- Feeding an animal
- Visiting a zoo, pet store or farm
- Attending a 4-H meeting
- Giving a short presentation
- Keeping a scrapbook
- Learning animal photography

4-H volunteer leaders must work within the guidelines of the cloverbud policy to ensure that children are safe at all times. Their emphasis remains on the young people and on providing educational, activity-centered experiences.

If 4-H cloverbud members are to have direct contact with an animal, the contact must take place with direct, one-on-one assistance from a responsible parent, guardian or adult volunteer. The parent, guardian or adult volunteer must be with or near the child at all times while the child is in contact with the animal.

4-H cloverbud members must wear ASTM- or SEI-approved helmets for all 4-H cloverbud horse experiences.

Five- and 6-year-olds may be involved with animals on a halter and lead. They must be directly assisted one-on-one by a parent, guardian or adult volunteer who is on the ground holding the animal's halter or lead to maximize safety. When 5- and 6-year-olds are working with horses, assistance must be provided by adults on foot, rather than mounted on other horses.

Children aged 5 and 6 may be involved with nonhaltered animals such as swine, chickens and rabbits. Again, each 4-H cloverbud must be directly assisted one-on-one by a parent, guardian or adult volunteer while the child is in contact with the animal.

4-H cloverbuds who are 7 and 8 (who haven't reached the 4-H age of 9) may be involved with an animal on a halter and lead. They must be assisted by either a parent or guardian or another adult or older youth volunteer who is on the ground holding the halter and lead.

In the 4-H horse project, walk-trot experiences may be an appropriate activity for children in this age group, with adult volunteers in the ring with the children at all times.



**NOTE THAT BOTH ARE FOR ANIMALS ON HALTER & LEAD (5-8 YEAR OLDS)- SAME RULES APPLY**

**DTE GRANT???**

THANK YOU TO OUR  
OUTGOING 4-H AMBASSADORS  
FOR REPRESENTING OCEANA COUNTY  
4-H SO WELL FOR THE  
2016/2017 YEAR.

HAILEY LEMMEN  
KATIE LEMMEN  
MAISIE WHITAKER

