

**MECOSTA COUNTY 4-H SWINE PROJECT AREA**  
**NOTEBOOK GUIDELINES**  
**SWINE EDUCATIONAL NOTEBOOK # 3**

Items A, B, C, D and E are required for notebooks 2- 4

- A. Decorative Cover
- B. Title Page
- C. Table of Contents and Notebook Guidelines
- D. Your 4-H story (Tell about your swine project- where you obtained, your goals etc.)
- E. Place the year that you complete each page in the lower right corner of each page.

Level Three (3) Swine notebook options:

- Options #1 -Fifth year complete 6 of the following items.  
-Sixth year complete the remaining 6 items.

Option #2 - Fifth year complete all 12 items.

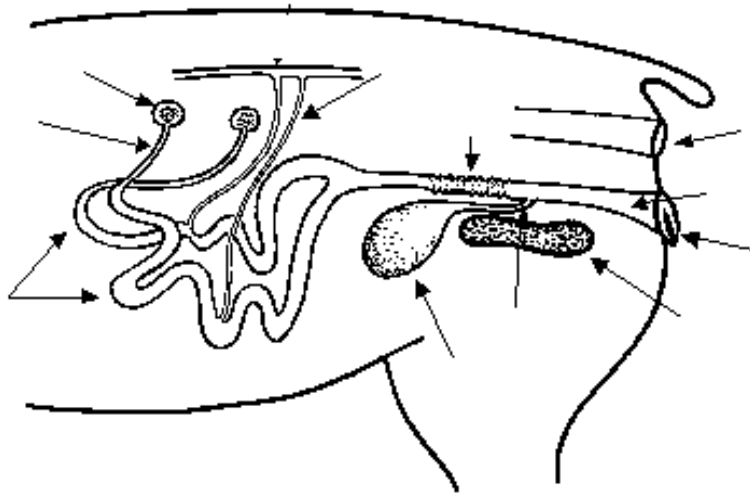
---

Year  
Completed

- \_\_\_\_\_ 1. Describe and tell the important characteristics of (2) breeds of swine. Total of (8) breeds in notebook. Include body type, breed standard and country of origin.
- \_\_\_\_\_ 2. Identify and label the parts of the reproductive system. Diagrams on page 2.
- \_\_\_\_\_ 3. Define the following terms; ovary, ovum, testis, sperm and the gestation period of a sow.
- \_\_\_\_\_ 4. Explain the proper procedure to help newborn piglets to breath if they need assistance.
- \_\_\_\_\_ 5. List (4) possible piglet loss reasons and how to avoid them.
- \_\_\_\_\_ 6. Explain why a gilt should be almost eight months old before she is bred.
- \_\_\_\_\_ 7. Describe the desirable characteristics of the swine's loin, shoulders and legs.
- \_\_\_\_\_ 8. Explain what cut bacon and ham come from and include (2) recipes containing either one.
- \_\_\_\_\_ 9. List (6) swine by-products and their uses.
- \_\_\_\_\_ 10. List what techniques are used to deworm swine.
- \_\_\_\_\_ 11. Continue your swine records for breeding, feeding, and expenses. Include in notebook
- \_\_\_\_\_ 12. Include pictures of you and your swine and any ribbons/awards you may have won at fairs/shows.

## Reproductive System

### THE REPRODUCTIVE TRACT OF THE SOW



#### Word Bank

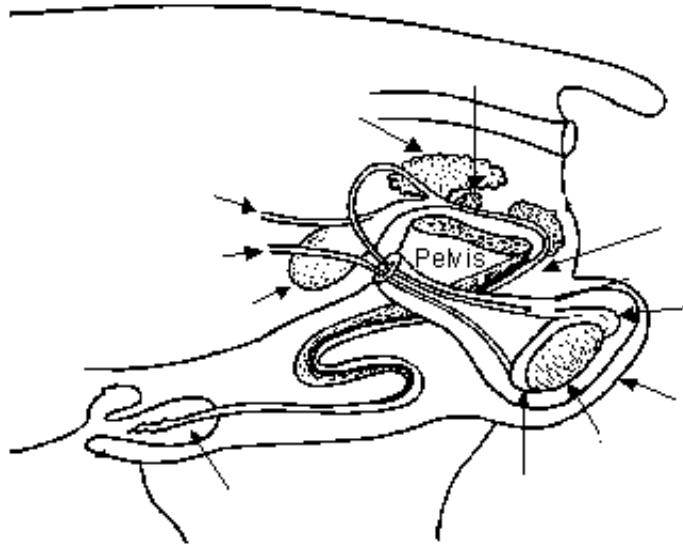
Ovary  
Horns of Uterus  
Bladder

Uterine Arteries  
Cervix  
Rectum

Oviduct  
Pelvis  
Urethra

Vulva  
Vagina

### THE REPRODUCTIVE TRACT OF THE BOAR



#### Word Bank

Bladder  
Epididymis(head)  
Prostate Gland

Testicle  
Ureter  
Epididymis (tail)

Blood Vessels  
Seminal Vesicles  
Urethra

Penis  
Scrotum