

MECOSTA COUNTY 4-H PROJECT AREA

NOTEBOOK GUIDELINES

BEEF EDUCATIONAL NOTEBOOK #2

Items A, B, C, D, and E are required for notebooks 2- 4

- A. Decorative Cover
- B. Title Page
- C. Table of Contents and Notebook Guidelines
- D. Your 4-H Story (Tell about your beef project- where you obtained, your goals etc.)
- E. Place the year you complete each page in the lower right corner of each page

Level Two (2) Beef notebook options:

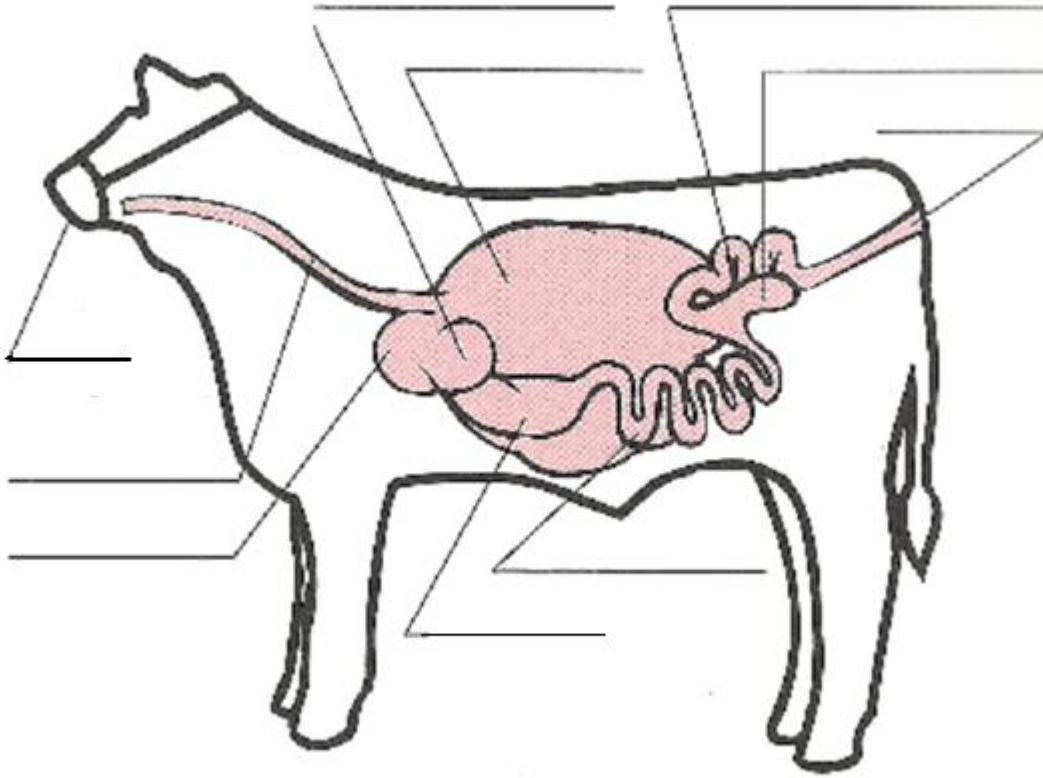
- Option #1 -Third year complete 6 of the following items
-Fourth year complete the remaining 6 items

- Option #2 -Third year complete all 12 items
-

Year
Completed

- _____ 1. Describe and tell the important characteristics of (3) breeds of beef. (May include dairy project breeds) Include body type and breed standard. Total of (6) in notebook.
- _____ 2. Identify and label parts of the digestive system. Diagram on page 2.
- _____ 3. Describe the symptoms, cause and treatment of pneumonia, ringworm and scours.
- _____ 4. Describe the daily feed requirements of grain, hay and water (in pounds) for both beef steers and feeder steers. Include what a typical grower and finishing ration of grain consists of. (% of ingredients)
- _____ 5. List the proper ranges for beef/dairy feeder vital signs. (temperature, heart rate and respiration rate)
- _____ 6. What is NCBA? How can they help you as a 4-H beef raiser?
- _____ 7. Explain the difference between a bull and a steer and why you would keep a bull intact or castrate.
- _____ 8. Identify three parasites that affect beef/dairy feeders.
- _____ 9. Describe a trip you took to a beef show, beef farm or any other beef event.
- _____ 10. List what vaccines should be administered to beef/diary feeder.
- _____ 11. Continue your beef/dairy feeder records for breeding, feeding, and expenses. Include in notebook.
- _____ 12. Include pictures of you and your animal and any ribbons/awards you may have won at fairs/shows.

Digestive System



Word Bank

Anus
Cecum
Rumen
Omasum

Abomasum
Reticulum
Large Intestine

Small Intestine
Esophagus
Mouth