

# MECOSTA COUNTY 4-H POULTRY PROJECT AREA

## NOTEBOOK GUIDELINES

### POULTRY EDUCATIONAL NOTEBOOK #4

Items A, B, C, D and E are required for all notebooks:

- A. Decorative cover
- B. Title page
- C. Table of contents and Notebook Guidelines
- D. Your 4-H story – tell us about your Poultry Project (to be completed each year)
- E. Place the year that you complete each page in the lower right corner of each page.

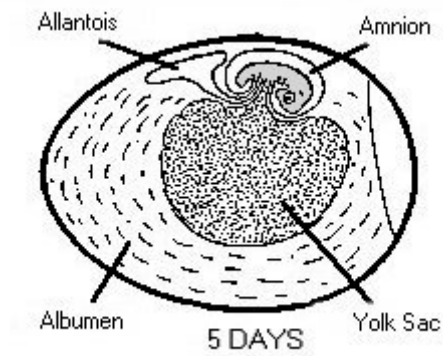
You must complete at least six of the twelve items to be considered a complete project notebook for the year. However, you do have the option of completing all twelve if you wish.

Please remember to keep the pages from Notebook #1, 2 and 3 in your binder as this is a progressive project notebook and should illustrate the knowledge you have gained over the years in your project area.

---

Year  
Completed

- \_\_\_\_\_ 1. Describe and explain the important characteristics of 10 breeds of poultry (i.e. Japanese bantams, Iza Brown, Bronze Breasted Turkey, Pekin Duck, etc) Examples of important characteristics includes, but are not limited to:
  - a. Average weight (male and female)
  - b. Color(s) of feathers, feet, skin, eggs, etc
  - c. Comb type
- \_\_\_\_\_ 2. Define the following terms as they refer to poultry:
  - a. Culling
  - b. Condition
  - c. Dubbing
  - d. Faking
  - e. Line-Breeding
  - f. Strain
  - g. Wattles
  - h. Uropygial Gland
  - i. Flock
  - j. Stub
- \_\_\_\_\_ 3. Explain and describe the American, Asiatic, and Mediterranean classes of chickens.
- \_\_\_\_\_ 4. Name three characteristics of poultry that are inherited and three that result from feeding and management.
- \_\_\_\_\_ 5. Explain cannibalism and how to prevent or stop it.
- \_\_\_\_\_ 6. Draw a diagram or take a picture of an incubator and describe/explain how it works..
- \_\_\_\_\_ 7. Describe each developmental stage of a chicken embryo (using diagram).
- \_\_\_\_\_ 8. Label the reproductive parts of both a hen and a rooster.
- \_\_\_\_\_ 9. Continue your record of expenses (feed, bedding, housing, purchase of new poultry)
- \_\_\_\_\_ 10. Label the parts of a wing.
- \_\_\_\_\_ 11. Add pictures of you and your poultry.
- \_\_\_\_\_ 12. Define organic and explain how it relates to poultry production.



Development at:  
5 days

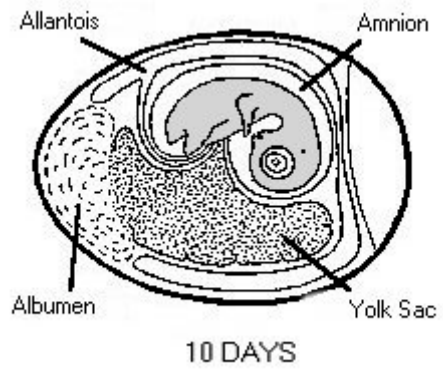
---

---

---

---

---



10 days

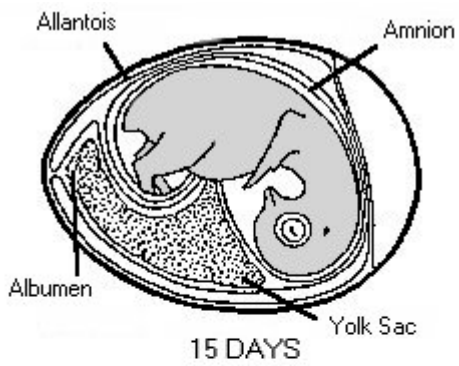
---

---

---

---

---



15 days

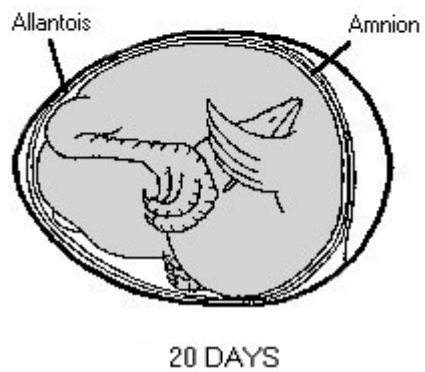
---

---

---

---

---



20 days

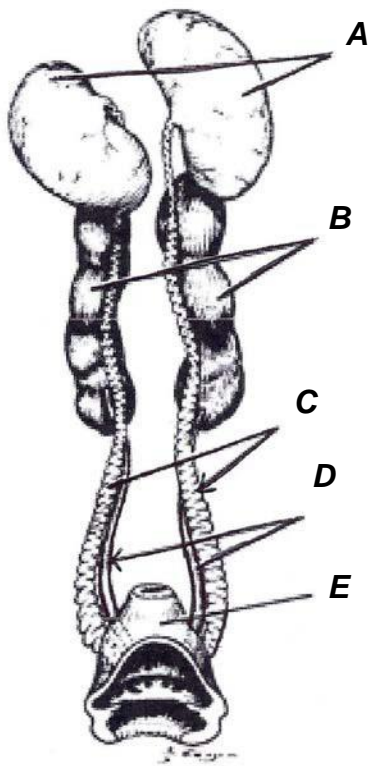
---

---

---

---

---



### Reproductive Parts of a Rooster

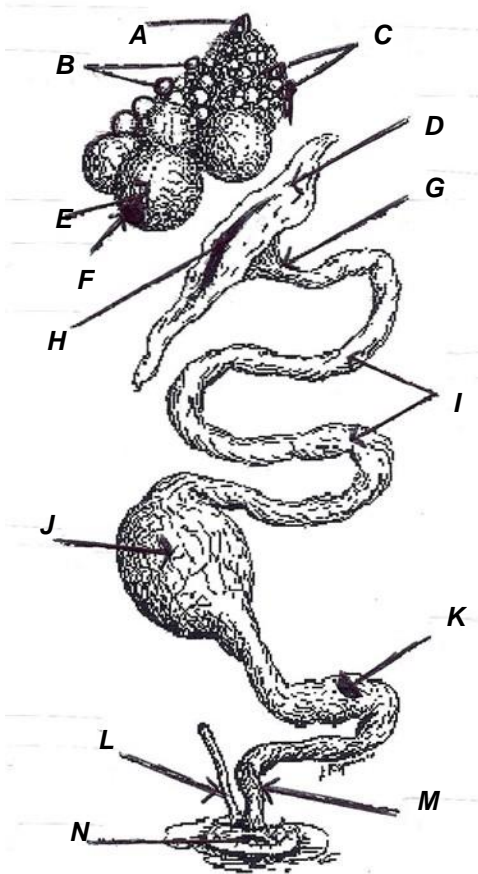
A \_\_\_\_\_

B \_\_\_\_\_

C \_\_\_\_\_

D \_\_\_\_\_

E \_\_\_\_\_



### Reproductive Parts of a Hen

A \_\_\_\_\_

B \_\_\_\_\_

C \_\_\_\_\_

D \_\_\_\_\_

E \_\_\_\_\_

F \_\_\_\_\_

G \_\_\_\_\_

H \_\_\_\_\_

I \_\_\_\_\_

J \_\_\_\_\_

K \_\_\_\_\_

L \_\_\_\_\_

M \_\_\_\_\_

N \_\_\_\_\_