

Lady beetles

Commonly predaceous as adults and larva. The adults also feed on pollen, nectar, and aphid honeydew



W. Sterling, Texas A & M

Larva



J. Kalisch, UNL Entomology

Soldier beetles / Ground beetles

Adults consume grasshopper eggs, aphids, caterpillars and other soft bodied insects. Adults also may feed on pollen and nectar.

Soldier beetle



Brett Blaauw, MSU Entomology

Ground beetle



Marlin E. Rice, Iowa State University

Lacewings (Brown and green)

Adults and larvae are predaceous. The adults also feed on pollen, nectar, and aphid honeydew



Brett Blaauw, MSU Entomology



Brett Blaauw, MSU Entomology

Larva



Brett Blaauw, MSU Entomology

Assassin bugs / Damsel Bugs

Predators as adults and larvae, feeding on aphids, caterpillars, and other pests.

Assassin bug



Robert L. Zimlich, BugGuide.net

Damsel bug



Tom Murray, BugGuide.net

Parasitic wasps

Some adults are predaceous, but most feed on pollen and nectar. Eggs are laid and larvae develop in or on host



Tom Murray, BugGuide.net



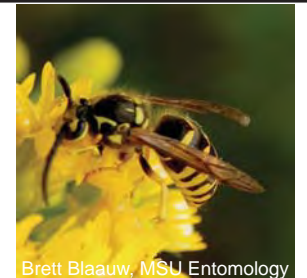
Tom Murray, BugGuide.net

Yellow jackets, hornets, and wasps

Primarily predaceous, may feed on nectar



Jo Ann Poe-McGavin, BugGuide.net



Brett Blaauw, MSU Entomology

Minute pirate bug

Both immature adults and larvae feed on a variety of small prey including thrips, spider mites, insect eggs, aphids, and small caterpillars



Tom Murray, BugGuide.net



Mike Quinn, BugGuide.net

Hoverflies

Look like bees, but only have 2 wings
Adults feed on pollen and nectar, larvae are predaceous

Larva



Brett Blaauw, MSU Entomology



Brett Blaauw, MSU Entomology

Common Crop Pollinators

Honeybees

The most commonly domesticated bee. Often used in fruit production for their pollination services.



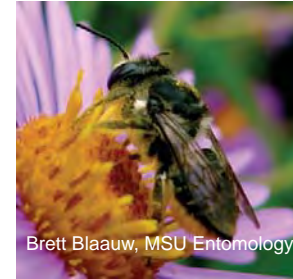
Brett Blaauw, MSU Entomology



Brett Blaauw, MSU Entomology

Mason bees and leaf-cutter bees

Names reflect the materials nest cells are made from - soil or leaves. Efficient pollinators that carry pollen on ventral side of abdomen.



Brett Blaauw, MSU Entomology



Edward Trammel, BugGuide.net

Bumblebees

A common native bee efficient at pollinating flowers. Domesticated bumblebees are also available for pollination services.



Brett Blaauw, MSU Entomology



Brett Blaauw, MSU Entomology

Blue orchard bee

A stingerless mason bee, commonly domesticated for fruit pollination.



Marvin Smith, BugGuide.net



Sean McCann, BugGuide.net

Yellow-faced bees and Cellophane bees

Small, dark colored bees. Commonly nest in the ground or in other natural cavities. Cellophane bees line nests with a thin transparent film



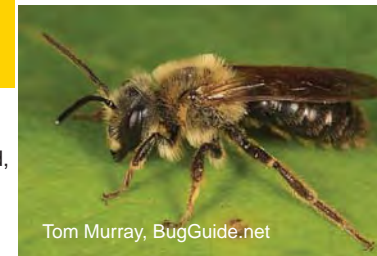
Tom Murray, BugGuide.net



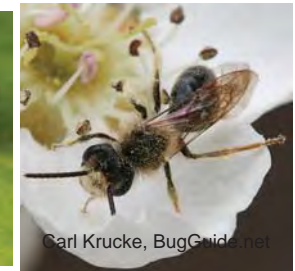
Ted Kroplewnicki, BugGuide.net

Mining bees

Small to moderate-sized, solitary, and nest in the ground.



Tom Murray, BugGuide.net



Carl Krucke, BugGuide.net

Sweat bees

Small, dark colored and sometimes metallic. Either nest in the ground or in wood.



Tom Murray, BugGuide.net



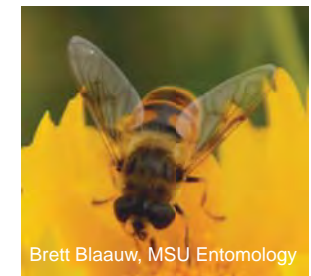
Brett Blaauw, MSU Entomology

Hoverflies

Look like bees, but only have 2 wings. Adults feed on pollen and nectar, larvae are predaceous



Brett Blaauw, MSU Entomology



Brett Blaauw, MSU Entomology