

A SNAPSHOT OF **BARAGA** **COUNTY**





About the Data

This County Profile is to be used with the 2015-2016 Issue Identification process for Michigan State University Extension. Unless otherwise noted, the data in the profile are drawn from the most recent 2000 U.S. Census and the 2013 American Community Survey. When information from one of the following sources is used, the source is indicated by the source number in parentheses. For example, information drawn from the Michigan Department of Agriculture and Rural Development will be noted like this: (1).

1. Michigan Department of Agriculture and Rural Development. (2014). *Michigan food and agricultural systems profiles*. Retrieved from <http://www.michigan.gov/mda rd/0,4610,7-125-1568-220573--,00.html>
2. United States Department of Agriculture. (2012). *USDA Census of Agriculture*. Retrieved from http://www.agcensus.usda.gov/Publications/2012/Online_Resources/County_Profiles/Michigan/index.asp
3. Michigan Department of Health and Human Services. (2013). *Community profiles: definitions, rates and ratios*. Retrieved from www.mdch.state.mi.us/pha/osr/CHI/profiles/frame.html
4. University of Wisconsin Population Health Institute. (2013). *County health rankings & roadmaps*. Retrieved from <http://www.countyhealthrankings.org/app/michigan/2015/overview>
5. The Michigan Department of Natural Resources. (2015, June). *Forestry state ownership by county*.
6. Index Mundi. (2006-2010). *Michigan Poverty Rate by County*. Retrieved from <http://www.indexmundi.com/facts/united-states/quick-facts/michigan/percent-of-people-of-all-ages-in-poverty#map>

A SNAPSHOT OF

Baraga County



Fast Facts

Population 8,787 people

Median age 44.4 years

Percent of people in poverty 12%

Median household income \$41,189

Median home value \$84,000

Top three economic sectors:

Manufacturing 23.4%

Educational services, health care and social assistance 19.9%

Retail 10.6%

Acres in:

Farmland 17,732 acres



GENERAL POPULATION

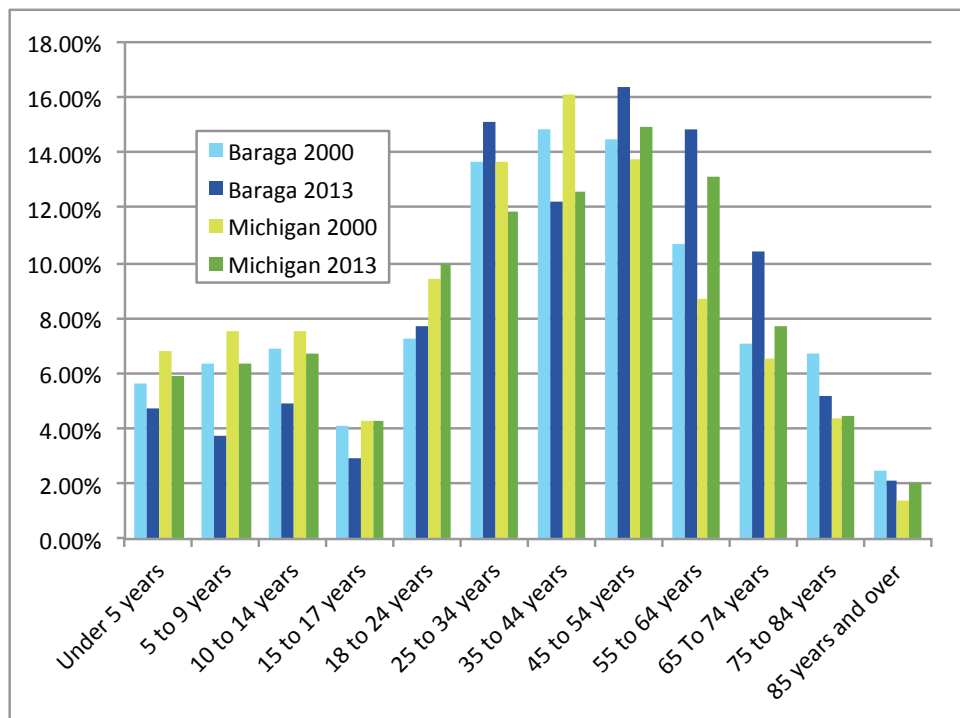
Year	Baraga County Population	Michigan Population
2000	8,746	9,938,444
2013	8,787	9,883,640

» The population in Baraga has increased from 2000 to 2013, while overall Michigan saw a decrease in total population.

Population Density (per sq. mile)

Year	Baraga Population Density (per sq. mile) / Area (Land)	Michigan Population Density (per sq. mile) / Area (Land)
2000	9.7 / 904	175.0 / 56,803.82
2013	9.8 / 898.26	174.9 / 56,538.90

Age Distribution



General Population, Continued

Gender

Year	Baraga County		Michigan	
	% Male	% Female	% Male	% Female
2000	52.6%	47.4%	49.0%	51.0%
2013	58.5%	41.5%	49.1%	50.9%

Race & Ethnicity

	Baraga County		Michigan	
	2000	2013	2000	2013
White alone	78.3%	73.9%	78.6%	76.3%
Black or African American alone	4.9%	15.3%	14.1%	13.9%
American Indian and Alaska Native alone	11.9%	5.8%	0.5%	0.5%
Asian alone	0.3%	1.1%	1.8%	2.5%
Native Hawaiian and Other Pacific Islander alone	0%	0%	0.0%	0.0%
Some other race alone	0%	0%	0.1%	0.1%
Two or more races	3.6%	2.7%	1.6%	2.1%
Hispanic or Latino	0.9%	1.1%	3.3%	4.5%



ECONOMY

Median Household Income

Median Household Income	Baraga County	Michigan
In 1999 dollars	\$33,673	\$44,667
In 2013 inflation-adjusted dollars	\$41,189	\$48,411

Per Capita Income

Per Capita Income	Baraga County	Michigan
In 1999 dollars	\$15,860	\$22,168
In 2013 inflation-adjusted dollars	\$17,701	\$25,681

» Per capita income is the average per-person income and is derived by dividing all the sources of income in an area by the total population.

Poverty

» Baraga Poverty Rate: 12% (6)
Michigan Poverty Rate: 14.8% (6)

Poverty Status	Baraga County		Michigan	
	2000	2013	2000	2013
Children under age 18:				
Living in poverty	14.0%	17.2%	13.9%	23.6%
Not living in poverty	86.0%	82.8%	86.1%	76.4%
Age 18 to 64:				
Living in poverty	10.2%	13.5%	9.6%	16.2%
Not living in poverty	89.8%	86.5%	90.4%	83.8%
Age 65 and over:				
Living in poverty	10.3%	8.4%	8.2%	8.2%
Not living in poverty	89.7%	91.6%	91.8%	91.8%

Economy, Continued

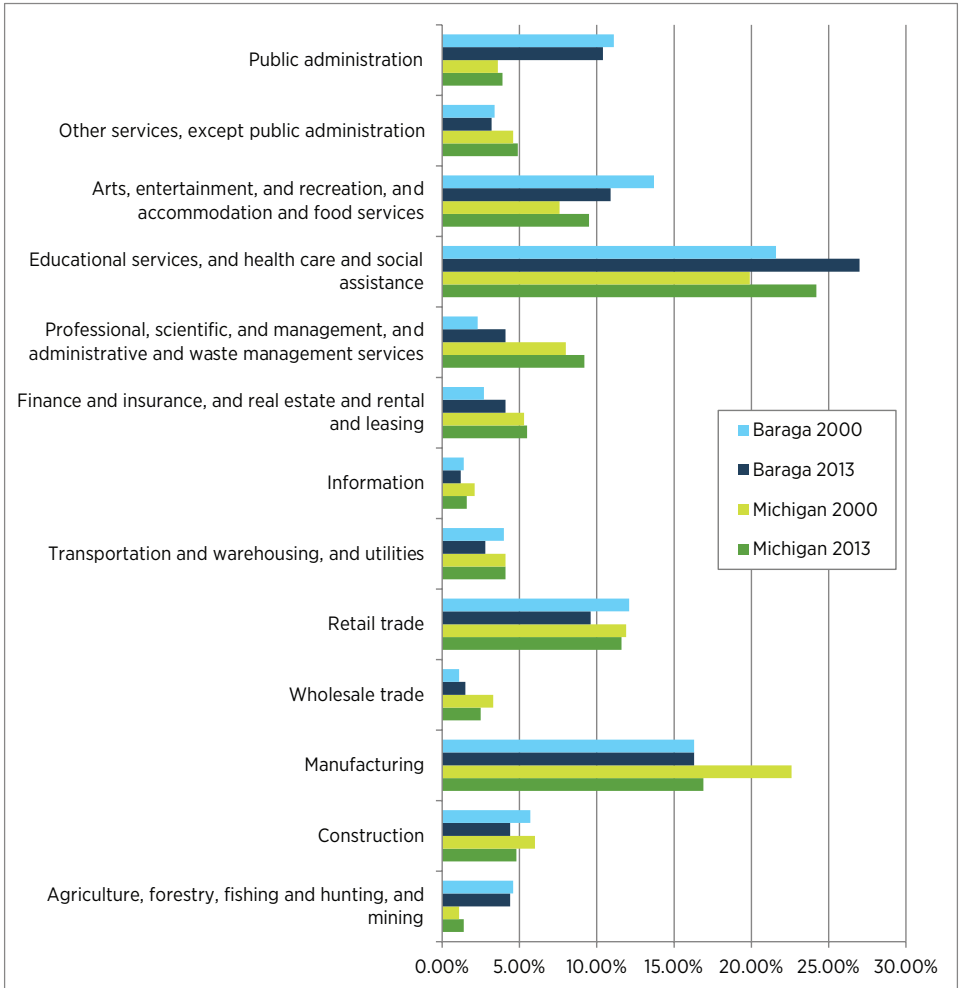
Labor Force

Employment Status for Total Population 16 Years and Over (2000)	Baraga County		Michigan	
	Number	Percent	Number	Percent
Population 16 years and over:	7,013		7,630,645	
In labor force	3,803	54.2%	4,926,463	64.6%
In armed forces	0	0%	4,010	0.1%
Civilian:	3,803	54.2%	4,922,453	64.5%
• Employed	3,504	50%	4,637,461	60.8%
• Unemployed	299	4.3%	284,992	3.7%
Not in labor force	3,210	45.8%	2,704,182	35.4%

Employment Status For Total Population 16 Years And Over (2013)	Baraga County		Michigan	
	Number	Percent	Number	Percent
Population 16 years and over:	7,531		7,865,350	
In labor force	2,894	38.4%	4,864,014	61.8%
In armed forces	3	0%	4,597	0.1%
Civilian:	2,891	38.4%	4,859,417	61.8%
• Employed	2,595	34.5%	4,242,948	53.9%
• Unemployed	296	3.9%	616,469	7.8%
Not in labor force	4,637	61.6%	3,001,336	38.2%

Economy, Continued

Industry



» From 2000 to 2013, manufacturing remained the same and the educational, health and social services sector increased in Baraga County. The same trend occurred for Michigan during that time.

Economy, Continued

Means of Transportation to Work (Age 16 Years and Over)

Means of Transportation to Work	Baraga County		Michigan	
	2000	2013	2000	2013
Car, truck, or van	90.3%	93.5%	92.9%	91.6%
Public transportation	0.4%	0.1%	1.4%	1.4%
Motorcycle	0.1%	0.2%	0.0%	0.1%
Bicycle	0.2%	0.2%	0.2%	0.5%
Walked	4%	1.9%	2.2%	2.2%
Other means	0.9%	0.7%	0.5%	0.6%
Worked at home	4.2%	3.4%	2.8%	3.6%



AGRICULTURE

Highlights	Baraga County	Michigan
Acres in ag production (2)	17,732 acres	9,948,564 acres
Acres of state forest (5)	68,665 acres	3,907,504 acres
Number of farms (2)	57 farms	52,194 farms
Average size of farm (2)	311 acres	191 acres
Average age of principal operator of farm (2)	58 years	57.6 years
Farm gate sales (2)	\$1,473,000	\$8,678,050,000

Baraga top three areas of agriculture production (by volume of sales) (2):

- » Cattle and calves
- » Other crops and hay
- » Fruits, tree nuts, and berries

FAMILIES & HOUSEHOLDS



Housing Units

	Baraga County		Michigan	
	2000	2013	2000	2013
Housing Units	4,631	5,243	4,234,279	4,529,311

Average Household Size

	Baraga County		Michigan	
	2000	2013	2000	2013
Average Household Size	2.4	2.1	2.6	2.5

Household Type

Household Type	Baraga County		Michigan	
	2000	2013	2000	2013
Family households:	66.3%	63.8%	68.0%	65.7%
• Married couple family	51.5%	48.7%	51.5%	48.5%
• Other family	14.8%	15.0%	16.5%	17.2%
- Male householder, no wife present	4.7%	3.5%	4.1%	4.4%
- Female householder, no husband present	10.1%	11.6%	12.4%	12.8%
Nonfamily households:	33.7%	36.2%	32.0%	34.3%
• Male householder	16.3%	17.2%	15.0%	16.0%
• Female householder	17.5%	19.1%	17.0%	18.4%

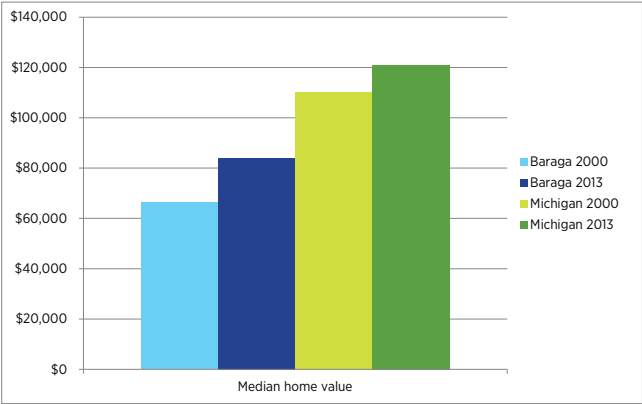
Marriages & Divorces

	Baraga County	Michigan
	2013	2013
Marriages filed (3)	43	55,396
Divorces and annulments granted (3)	18	31,687

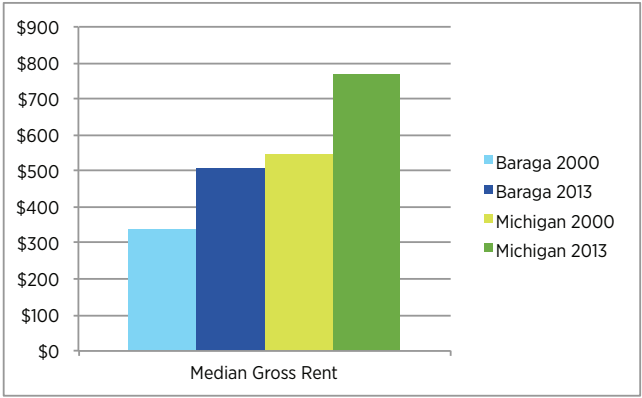


HOUSING

Median Home Value



Median Rent in Dollars per Month



Median Year Structure Built

	Baraga County		Michigan	
	2000	2013	2000	2013
Median year structure built	1965	1967	1965	1969

Type of Ownership

	Baraga County	Michigan
	2013	2013
Owner-occupied housing units	2,564	2,757,062



HEALTH & MORTALITY

Leading Causes of Death – Adults

Causes of Death (3)	Baraga County	Michigan
	2013	2013
Heart disease	28	24,143
Cancer	19	20,395
Chronic lower respiratory disease	3	5,547
Stroke	8	4,365
Accidents	3	4,194
Alzheimer's	3	3,228
Diabetes mellitus	6	2,821
Pneumonia/flu	2	1,892
Kidney disease	1	1,665
Suicide	6	1,296

Leading Causes of Death – Children Ages 1-19

Causes of Death (3)	Baraga County	Michigan
	2013	2013
Accidents	-	213
Assault (homicide)	1	90
Suicide	-	88
Cancer	-	56
Congenital malformations	-	42

Obesity & Diabetes

	Baraga County	Michigan
	2013	2013
Obesity (4)	32%	32%
Diabetic (4)	11%	10%

Health and Mortality, Continued

Children

	Baraga County	Michigan
	2013	2013
Live births (3)	79	113,732
Teen births (3)*	3	7,944
Children eligible for free lunch (4)	40%	41%

* Age of mother between 10–19.

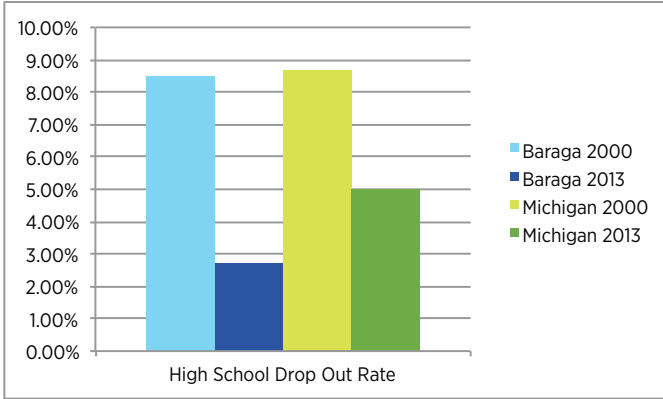
Health Insurance

	Baraga County	Michigan
	2013	2013
No health insurance coverage	11.3%	11.6%
With health insurance coverage:	88.7%	88.4%
• Public Health Coverage	42.5%	33.3%
• Private Health Insurance	68.2%	69.3%

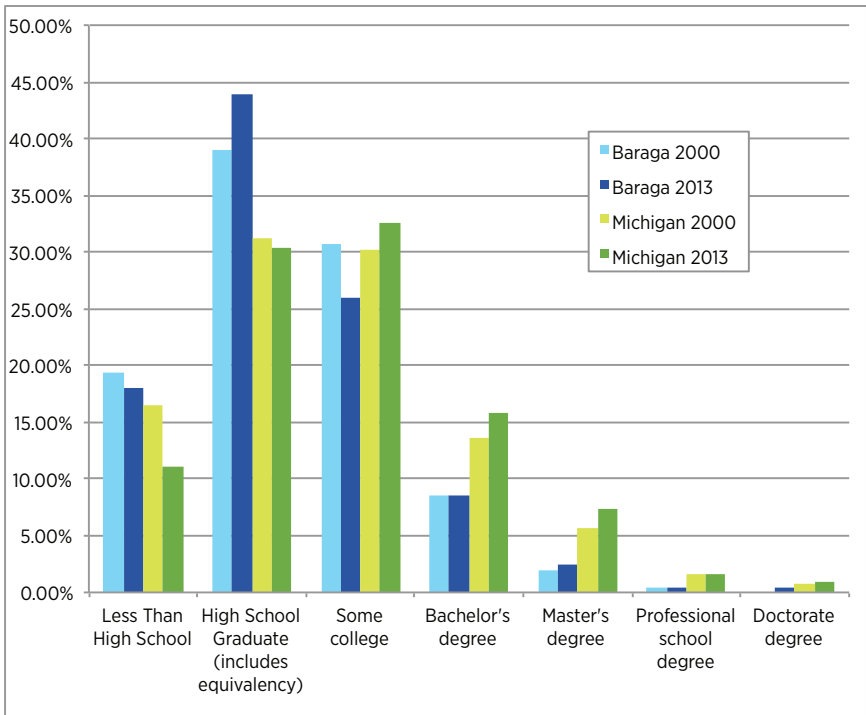
EDUCATION



High School Dropout Rate



Education Attainment



» The percentage of Baraga County residents with a bachelor's degree or more is 11.6% compared to Michigan residents with 25.9%



MSU is an affirmative-action, equal-opportunity employer, committed to achieving excellence through a diverse workforce and inclusive culture that encourages all people to reach their full potential. Michigan State University Extension programs and materials are open to all without regard to race, color, national origin, gender, gender identity, religion, age, height, weight, disability, political beliefs, sexual orientation, marital status, family status or veteran status. Issued in furtherance of MSU Extension work, acts of May 8 and June 30, 1914, in cooperation with the U.S. Department of Agriculture. Ray Hammerschmidt, Interim Director, MSU Extension, East Lansing, MI 48824. This information is for educational purposes only. Reference to commercial products or trade names does not imply endorsement by MSU Extension or bias against those not mentioned. Produced by ANR Communications. 7:2015-PA/MR