

Enviro-weather Tools for Tree Fruit:

Weather-based tools for better cherries and apples

Jeff Andresen, Tracy Aichele, Beth Bishop, Jim Brown, Joy Landis, Aaron Polyea, Larry Olsen, and Steve Marquie

Base research and extension for Enviro-weather is from Project GREEN, MSU Extension, AgBioResearch, Michigan Climatological Resources Program and MSU Integrated Pest Management Program

Fruit growers say Enviro-weather makes a difference

A survey of 1,000 Michigan apple, sweet and tart cherry growers found those using Enviro-weather were able to:

- Save on insecticide and fungicide applications
- Use 30 to 50 percent fewer fungicide treatments to control four major diseases
- Reduce the amount of pesticides applied to apples and cherries by 306,239 lbs of active ingredient per year

Get help making cherry leaf spot spray decisions

The cherry leaf spot model is a guide for determining if eradicative sprays are needed when protectant coverage is weakened by rain.

Station	Date	Temp (F)	Humidity (%)	Rain (in)	Leaf Wetness (hr)	Model Output
...

Enviro-weather answers questions: "Is it likely to freeze tonight?"

Three summary tables in the **Overnight Temperatures tool** help you evaluate whether frost damage occurred and if you should take frost-protection measures for the next night.

Table 1 - Hourly temperatures from last night for several local weather stations.

Station	Time	Temp (F)
...

Table 2 - Forecasted low temperatures for the next night.

(disregard date in forecast diagram)

Station	Forecasted Low (F)
...	...

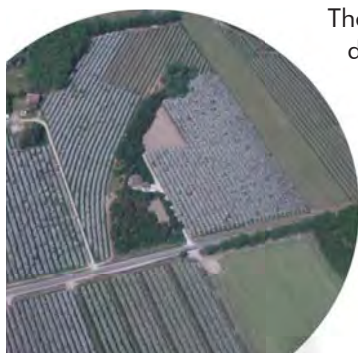
Table 3 - Late afternoon dew points for predicting frost in calm, clear conditions.

Station	Dew Point (F)
...	...

Use our models for better apple scab control

The apple scab report helps you determine fungicide control options based on whether a wetting period was sufficient to initiate infection.

Station	Date	Temp (F)	Humidity (%)	Rain (in)	Leaf Wetness (hr)	Model Output
...



Start it all at our home page:
www.enviroweather.msu.edu



Thanks for supporting Enviro-weather!

We can't do it without you

Michigan Apple Committee



Cherry Marketing Institute



Grand Traverse Fruit Council

Michigan State Horticultural Society

And our many farmer cooperators!

www.enviroweather.msu.edu