

## Squash bugs as pests of cucurbits in Michigan

By Amanda L. Buchanan, Alexandria Bryant, William R. Morrison III, Benjamin Werling, Nicole Quinn, and Zsofia Szendrei

Cucurbits in Michigan are vulnerable to squash bug damage throughout the growing season. Squash bugs prefer pumpkin and squash, but will feed on other cucurbits like cucumber and watermelon. Squash bug juveniles and adults can cause significant damage to foliage and fruits.

**Appearance:** Squash bugs lay clusters of 10-20 eggs on the surface or underside of leaves between leaf veins, or on the stem (Fig 1A). Eggs are small, oblong, and a shiny copper color. Upon hatching, nymphs are green with red legs and antennae, which turn black within hours (Fig 1B).

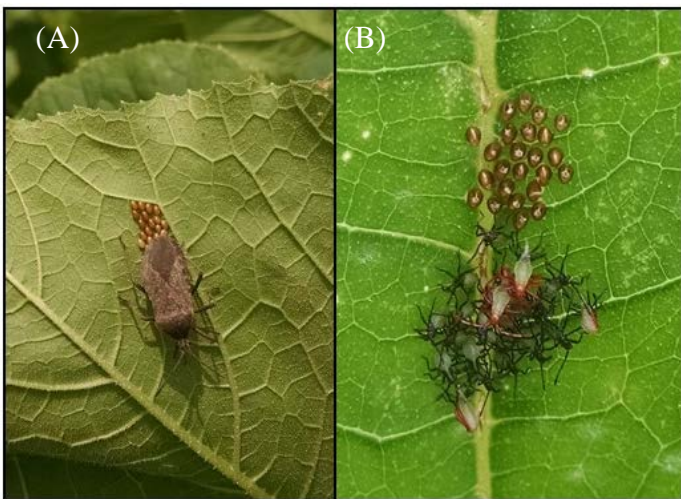


Figure 1. (A) Squash bug adult laying eggs, and (B) newly hatched eggs and early nymphs. Photo credit: A.L. Buchanan

As nymphs mature their bodies become gray (Fig 2A). Adults are flat-bodied, ~ 5/8" long, black and brown with light and dark stripes along the side (Fig 2B). Nymphs will often be seen clustered together, while

adults are found singly or in mating pairs. Adults can fly but generally walk on the ground between plants, where they are well-camouflaged.



Figure 2. (A) Squash bug late nymphs, and (B) adults. Photo credit: A.L. Buchanan, W.R. Morrison III

**Life cycle:** Adults overwinter indoors or in leaf litter or field debris, and emerge in April or May to lay eggs. Nymphs hatch within 10 days and begin to feed, reaching adult stage in 35-40 days. Squash bugs have one generation per year in Michigan, but all life stages can be observed at any time of the season.

**Similar species:** The horned squash bug feeds on cucurbits, but is less damaging than the squash bug. Horned squash bugs have more prominent spines on the head. Similar herbivorous insects include leaf-footed bugs (Fig 3) which are less likely to cause serious damage to cucurbits than squash bugs.



Figure 3. Other insects, like leaf-footed bugs, may appear similar to squash bugs but are not economically important pest of cucurbits. Photo credit: P.L. Coffey

To contact an expert in your area, visit [msue.anr.msu.edu/experts](http://msue.anr.msu.edu/experts), or call 888-MSUE4MI (888-678-3364).

Squash bug adults may also be confused with assassin bugs (Fig 4A) or spined soldier bugs (Fig 4B). Assassin bugs typically have a more sculpted body and a spiny exterior. Spined soldier bugs are shield-shaped with distinctly pointed shoulders. Both of these insects are beneficial predators and their presence should be encouraged.

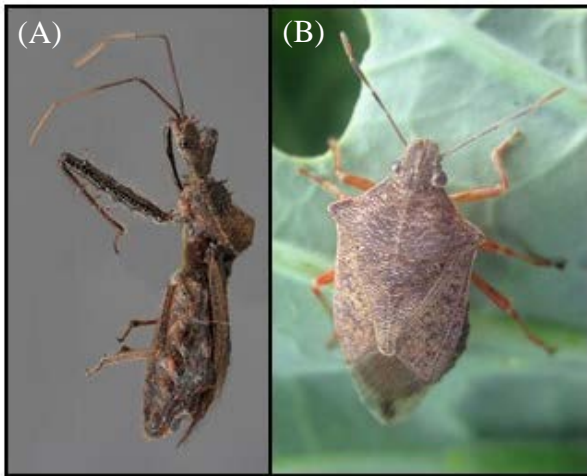


Figure 4. The (A) assassin bug and (B) spined soldier bug are beneficial predators. Photo credit: W.R. Morrison III

**Damage:** Squash bugs prefer squash and pumpkins but will feed on other cucurbits. Adults and nymphs feed on leaves and fruit by piercing and sucking plant juices, damaging plant tissue and potentially spreading disease. Leaf damage causes brittle discolored spots or wilting (Fig 5A-B). Fruit becomes disfigured and discolored (Fig 5C).

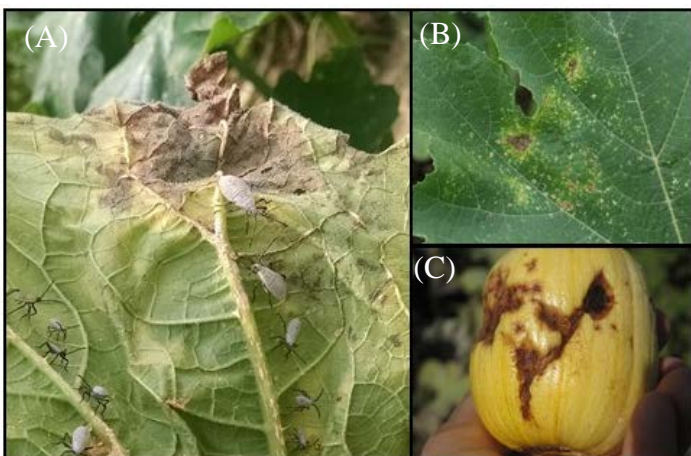


Figure 5. Squash bug damage on (A-B) leaves and (C) fruits. Photo credit: A.L. Buchanan, W.R. Morrison III

**Management:** Visual scouting for all life stages of squash bugs should occur from June to September. Insecticides are most effective on young squash bug nymphs (Fig 1B) compared to other life stages.

At cucurbit seedling stage, the threshold for chemical control of squash bugs is *any* squash bug presence.

After the seedling stage, the threshold for chemical control is one egg mass per plant.

### Cultural and biological controls

Removing field debris after harvest reduces overwintering habitat for adult squash bugs. Trap cropping can be used to exploit squash bugs' preference for squash and pumpkin—planting a border or small plot of squash or pumpkin near less-preferred cucumber or watermelon crops can attract squash bugs away from cucumber and watermelon fields. Natural enemies can help manage pest populations: spiders, lady beetles, ground beetles, lacewings, and nematodes feed on pests, and parasitoid wasps and flies kill pest eggs.

### Other resources

Enviroweather – up to date soil temps and degree days:  
<http://enviroweather.msu.edu/homeMap.php>

MSU vegetable entomology website:  
<http://vegetable.ent.msu.edu/>

Updated 3/3/2017

To contact an expert in your area, visit [msue.anr.msu.edu/experts](http://msue.anr.msu.edu/experts), or call 888-MSUE4MI (888-678-3364).

Michigan State University  
**AgBioResearch**  
 agbioresearch.msu.edu

MSU is an affirmative-action, equal-opportunity employer, committed to achieving excellence through a diverse workforce and inclusive culture that encourages all people to reach their full potential. Michigan State University Extension programs and materials are open to all without regard to race, color, national origin, gender, gender identity, religion, age, height, weight, disability, political beliefs, sexual orientation, marital status, family status or veteran status. This information is for educational purposes only. Reference to commercial products or trade names does not imply endorsement by MSU Extension or bias against those not mentioned.