

# grapes.msu.edu

[Home](#)[About Us](#)[Search](#)[Newsletters](#)[Weather /  
Climate](#)[Viticulture](#)[Pest  
management](#)[Scouting guide](#)[Publications](#)[Calendar of  
events](#)[Industry links](#)[Contacts](#)

Download [Adobe Acrobat Reader](#) to view pdf files.

## Ladybeetles

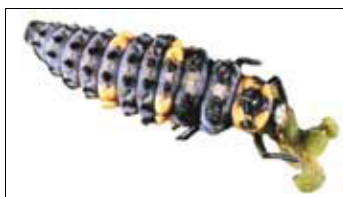
Rufus Isaacs, MSU Entomology

[Home](#) > [Scouting guide](#) > ladybeetles

Several species of lady-beetles are active in vineyards. They are generally oval and red to orange with varying numbers of dark spots. Both adults and larvae are predators, eating soft-bodied small insects.



Ladybeetle eggs are yellow and barrel-shaped and laid in clusters.



Larvae have dark, elongated bodies with orange markings and well developed legs. 5 mm



Ladybeetle.

### Additional information

- For additional information see: <http://www.ipm.msu.edu/asianladybeetle.htm>
- About **natural enemies** (from *Fruit Crop Ecology and Management*)
- More about **ladybeetles** (From *Identifying natural enemies*)

[Site map](#)[Copyright/Linking](#)

Funding for this web site provided by [Project GREEN](#), [American Farmland Trust](#), [EPA Region 5's Strategic Agricultural Initiative program](#), [The National Foundation for IPM Education](#), the [Center for Agricultural Partnerships](#) and the [MSU Integrated Pest Management Program](#) in collaboration with [MSU Extension](#) and the [Michigan Agricultural Experiment Station](#). Partially support from [NC-IPM Center](#).

05/26/11 Contact: E. Haney