

grapes.msu.edu

[Home](#)[About Us](#)[Search](#)[Newsletters](#)[Weather /
Climate](#)[Viticulture](#)[Pest
management](#)[Scouting guide](#)[Publications](#)[Calendar of
events](#)[Industry links](#)[Contacts](#)

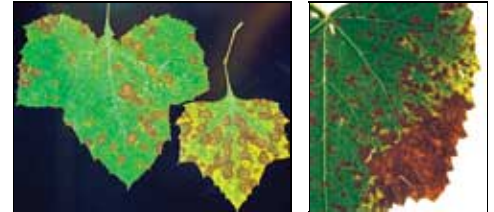
Download [Adobe Acrobat Reader](#) to view pdf files.

Septoria leaf spot - *Septoria ampelina*

Annemiek Schilder, MSU Plant Pathology

[Home](#) > [Scouting guide](#)> septoria leaf spot

Septoria leaf spot, also called mélanose, is a minor foliage disease in the eastern and midwestern United States. The disease mainly affects American Vitis and muscadine grapes. Angular, reddish brown to black spots that are 1 to 2 mm in diameter appear after midseason. Nearing veraison, lesions become larger with diffuse margins. Fruiting bodies may be seen with a hand lens. The area surrounding the spots may be yellow. The fungus overwinters in infected leaf debris.



Additional information

- Search [MSU Extension News for Agriculture](#) site
- [Search MSU Fruit CAT Alert](#) newsletter for articles
- [MSU Diagnostic Services](#)
- [Special grape disease problems and controls](#) (from [Michigan Fruit Management Guide](#))
(Download [Adobe Acrobat Reader](#) to view PDF files)

[Site map](#)[Copyright/Linking](#)

Funding for this web site provided by [Project GREEN](#), [American Farmland Trust](#), [EPA Region 5's Strategic Agricultural Initiative](#) program, [The National Foundation for IPM Education](#), the [Center for Agricultural Partnerships](#) and the [MSU Integrated Pest Management Program](#) in collaboration with [MSU Extension](#) and the [Michigan Agricultural Experiment Station](#). Partially support from [NC-IPM Center](#).

05/26/11 Contact: [E. Haney](#)