

# grapes.msu.edu

[Home](#)[About Us](#)[Search](#)[Newsletters](#)[Weather /  
Climate](#)[Viticulture](#)[Pest  
management](#)[Scouting guide](#)[Publications](#)[Calendar of  
events](#)[Industry links](#)[Contacts](#)

Download [Adobe Acrobat Reader](#) to view pdf files.

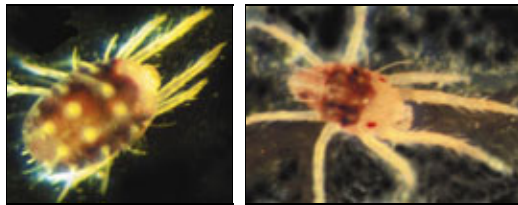
## European red mite

Rufus Isaacs, MSU Entomology

[Home](#) > [Scouting guide](#)> European red mite

Adult female European red mites are less than 0.5 mm and dark red with eight legs. Adult males are smaller than the females and have a pointed abdomen. Males are usually dull green to brown.

Mites hatch in the spring from tiny, spherical eggs laid around cane nodes and under loose bark. These eggs can be detected by scouting in early spring. Although several generations can occur each season, populations rarely increase enough to cause significant damage because predatory mites usually prevent their growth.



Above left, adult female; right, adult male.



Mite eggs.

## Additional information

- Search [MSU Extension News for Agriculture](#) site
- Search MSU *Fruit CAT Alert* newsletter for articles. Type in keyword: european red mite
- Recommendations from the [Michigan Fruit Management Guide](#)

[Site map](#)[Copyright/Linking](#)

Funding for this web site provided by [Project GREEN](#), [American Farmland Trust](#), [EPA Region 5's Strategic Agricultural Initiative](#) program, [The National Foundation for IPM Education](#), the [Center for Agricultural Partnerships](#) and the [MSU Integrated Pest Management Program](#) in collaboration with [MSU Extension](#) and the [Michigan Agricultural Experiment Station](#). Partially support from [NC-IPM Center](#).

05/24/11 Contact: [E. Haney](#)