

Postharvest rots

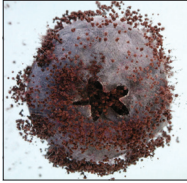
Various fungi

Post-harvest rots caused by various fungi can result in serious losses in stored blueberries.

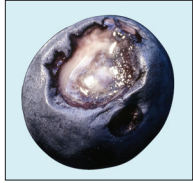
Symptoms. Berries become covered with fungal growth and/or spores, and may become soft or leaky.



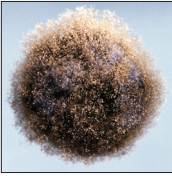
Alternaria



Aspergillus



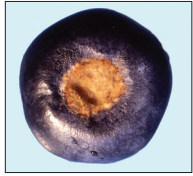
Aureobasidium



Botrytis



Colletotrichum



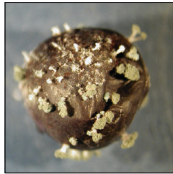
Epicoccum

Disease cycle. Most of these fungi attack only ripe or overripe fruit and are rarely seen in the field. They can spread from infected to healthy berries upon contact.

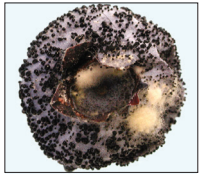
Management. Harvest in a timely manner; handle berries dry; rapidly cool fruit after harvest; apply fungicides before harvest.



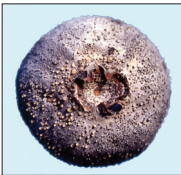
Hainesia



Penicillium



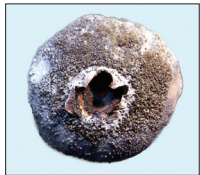
Pestalotia



Phomopsis



Rhizopus



Sphaeropsis