

*please help us grow...*

## The Curious Gardener

### Fall 2015 classes start next week!!

For more information, to register online, or to become a Garden Member, go to <http://www.hrt.msu.edu/curious-gardener/>

#### ❖ Fall Garden Treasures

**Dr. Art Cameron, Director, MSU Horticulture Gardens**

**Tuesday, September 8<sup>th</sup> from 6 to 8 PM**

**\$10 for Garden Members; \$15 for Non-members**

Take a walk with the Garden Director to view some of the amazing plants that show off in September in the MSU Horticulture Gardens. You'll be amazed at the diversity of plants that peak in autumn, including annuals, edibles, perennials, ornamental grasses and woody plants! Art will cover plant ID, showy combinations, design tricks and garden maintenance. Questions will be encouraged!

#### ❖ Love Your Tenders!

**Renata Reibitz, Perennial Manager, MSU Horticulture Gardens**

**Tuesday, October 13<sup>th</sup> from 6 to 8 PM**

**\$15 for Garden Members; \$20 for Non-members**

Did you have that one container that looked so good you want to save the plants for next year? Not sure how to store your summer blooming bulbs? We will discuss and demonstrate how to prepare and store tender bulbs such as elephant ears, dahlia, and canna as well as techniques for overwintering certain annuals. Discussion will also include preparing your garden for the winter, so bring your questions. Everyone will leave with a gem from the gardens.

#### ❖ Festive Fall Arrangement

**Dixie Sandborn, 4-H Horticulture Specialist and owner of Sandborn Botanicals**

**Friday, November 20<sup>th</sup> from 1 to 3 PM**

**\$40 for Garden Members; \$45 for Non-members**

Make a Thanksgiving arrangement that will be the talk of your holiday gathering. Using pumpkins, gourds and fall flowers, you will learn just how to create your own beautiful floral display. Each participant will receive all materials required and will take home their creation.

#### ❖ Evergreen Holiday Wreath

**Daedre Craig and Jessica Wright, MSU Horticulture Garden Staff Members**

**December 9<sup>th</sup> from 3 to 5 PM**

**\$35 for Garden Members; \$45 for Non-members**

Create an inviting entrance to your home by attending our Evergreen Holiday Wreath workshop. By the end of this workshop, you have a festive wreath you can take home to enjoy over the holidays. You will be provided with all the "parts" and will be given instructions on how to assemble the wreath with evergreens, ribbons and other accessories.

*please help us grow...*

## New Hosta Shade Arbor Installed in Gardens

Over the last few years, the trees (Bradford pears) shading our hosta collection have been hard-hit by ice storms! After the winter of 2013, no trees remained and by midsummer many hosta leaves were burnt by the bright sun. We needed to move the garden or provide some shade! Thanks to a generous gift from **Ronald Hagaman** and dedicated to his wife **Betty Hagaman**, we were able to construct a new hosta arbor this summer, creating shade and enhancing the value of our display. In Ron's words, "Betty and I worked many hours as volunteers in the Horticulture Gardens and Beal Gardens. Betty loved hostas and contributed several to the Gardens." After construction was completed last month, Perennial Garden Manager Renata Reibitz quickly created a beautiful design including nearly 100 hosta cultivars. Over 60 new cultivars were donated by one of our volunteers Jerry Nester. Thanks Jerry! We are very pleased with how the new arbor and design seem to fit perfectly in the gardens. For more photos, [follow this link](#). We hope to continue expanding this collection as the garden matures.



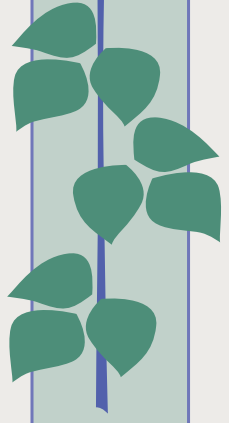
Ice storm damage, Winter 2013



Construction begins, July 2015



Completed shade structure with new design utilizing over 100 cultivars of hosta, August 2015



*please help us grow...*

## Master Gardener Design Contest

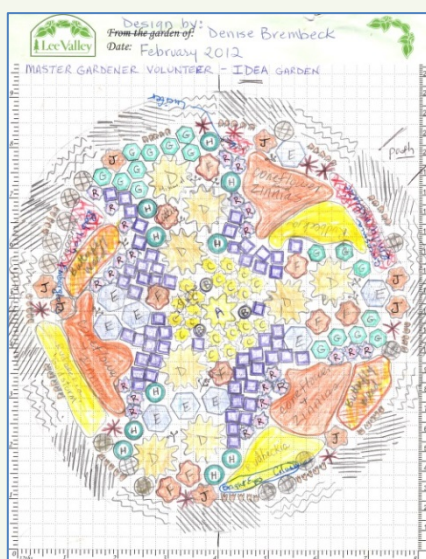
**Michigan Master Gardeners** are invited to submit a garden design for the Master Gardener Idea Bed located in the Michigan State University Horticulture Gardens. Master Gardeners can work individually or in teams. If selected, your design will be planted spring of 2016 and grown for four years. Also, with your permission, your name will be displayed on a sign with a description placed near the bed.

**Judith and George Mynsberge** generously endowed this garden to give Master Gardener Volunteers an opportunity to share their creative garden design skills and ideas.

**Design criteria:** This bed is round and ~35 feet in diameter with full sun. Include path(s) for maintenance access into the bed and utilize hardy perennials, shrubs and bulbs (no annuals). Use “tough” plants since there is no installed irrigation in this area. There is also no electricity for water features.

**Judging** will be by MSU Horticulture Garden staff horticulturists based on the following criteria:

1. Unique and suitable plant material used to create interesting plant combinations
  2. Viewable from all sides
  3. Ease of maintenance
  4. Use of at least one ornamental grass, plants with blue foliage or flowers as per donor request
  5. Use of functional ideas that educate and perhaps inspire our visitors
- Themes are useful but not necessary. If you do have a theme, please let us know!
  - You do not need to be a professional designer – so have fun and submit. You may just win!
  - Your design will not be judged by your presentation skills
  - Submit forms and designs by mail or by email **no later than December 1, 2015**.
  - Volunteer credit will be awarded for each design submitted.



Illustrated here is the 2012 winning design submitted by Denise Brembeck. You can download a pdf with the design and photographs of the performance this past summer [by clicking here](#)

Download application forms by [following this link](#).

Submit your design with the Design Contest Registration Form to:  
**Master Gardener Idea Bed Design Contest**  
 1066 Bogue Street,  
 B110 Plant and Soil Science Building  
 East Lansing, MI 48824

You can submit the design and application by email to:  
 Renata Reibitz at [reibitzr@msu.edu](mailto:reibitzr@msu.edu)

If you have any questions, please contact Renata Reibitz at [reibitzr@msu.edu](mailto:reibitzr@msu.edu) or 517-353-0330



please help us grow...

## Garden News

### Our new bathrooms will be finished soon!

We have always needed more bathrooms in the gardens since its inception. All our visitors know it can be a long walk back into the Plant and Soil Science Building from the far corners of the garden! We are so pleased that construction is moving along, and we expect our new bathrooms to open this fall. They are located just east of the 4-H Children's Garden and west of the Schoolyard Demonstration Garden. [Check here for photos of the progress.](#)

### New shade in conservatory

After 27 years, the shades in our conservatory were in bad shape! Stains made them unsightly and broken cables meant that they did not fully open or close. We are excited that these old shades are now replaced with new light-weight versions that look and function great! What an improvement this will be for wedding receptions and other functions on hot sunny days.

### What a team!

We have heard many positive comments about our gardens this year. More than once, visitors have told us that this is just the best it has ever been! We like to think so, too! It truly takes team work to make the gardens so beautiful. Our team definitely includes our staff and students! We are indebted to their enthusiasm and dedication this past summer.



### Pictured left to right:

**Back row :** Ryan Betzer\* (*student intern*), Dan Bulkowski (*Garden Manager*), Daedre Craig (*Annual Trial Garden Manager*), Renata Reibitz (*Perennial Garden Manager*), Art Cameron (*Garden Director*)

**Middle row:** Eileen Reeves (*summer student*), Erin Faivor\* (*summer student*)

**Front row:** Angela Nelson\* (*student intern*), Nicole Coleman (*summer student*), Erin Zerwas (*summer student*), Mary Haven\* (*summer student*), Carly Roberts\* (*student intern*), Jennifer Sweet (*Events Coordinator*)

**Not pictured:** Summer students: Alex Noffsinger, Kate Lang, Leah McKenney, Ian Quam, Enrico Sabbatini, Kyle Bindseil\*

**Staff:** Doug Badgero

**Curators:** Dr. Norm Lownds and Dr. Robert Schutzki

\*denotes horticulture major

*please help us grow...*

## Garden Events

### ❖ Fall Garden Treasures

Tuesday, September 8<sup>th</sup> from 6 to 8 PM

\$10 for Garden Members; \$15 for Non-members

[Register for Fall Garden Treasures online here](#)

Learn new plants and plant combinations, how to store tender bulbs and how to make your own holiday arrangements by participating in one of our Curious Gardener programs this fall. The series starts Tuesday, September 8 with “Fall Garden Treasures”, an informative walk led by Garden Director Dr. Art Cameron. For more details on the rest of the series, check page 1 or [follow this link](#).

### ❖ 4-H Children’s Gardens - Stories for Sprouts & Seedlings:

*The Apple Pie Tree* by Zoe Hall

September 15, 10 – 11 am

[Register for Stories for Sprouts and Seedlings online here](#)

This program is designed especially for young children, ages 2-4, to experience the wonders of gardening through stories and hands-on projects. Each month features a different book with an accompanying gardening activity.

Cost per child: Free (though we appreciate it if you register) though Parking not included. Parking can be paid for at the meter with either a credit card or U.S. coins. The charge for parking is \$1.80 per hour.



### Recent email from a “fan”!!

*Wow the gardens are the most beautiful they've ever been!!! I have been in love with the gardens since grad school in 81/82. I no longer live in town but visit them most trips home when visiting family. I just wanted to tell you that the flowers and plants seemed the most beautiful ever Thursday night. Everything is so vibrant and lush and fun. Especially the zinnias, kales, onions and senecios. Thank You!*

*please help us grow...*

## Follow us on Facebook

If you are a Facebook person, please “like” us to learn more about our [Programs](#) and our [Weddings and Events](#), details about our upcoming programs, or to see what has been flowering in our gardens!

## Support our MSU Horticulture Garden Endowments

Our MSU Horticulture Gardens are largely self-funded and we generate over half of our yearly budget by MSU Horticulture Garden Memberships, spring plant sales and events and weddings, educational programs and workshops, and fees from our Annual Plant Trials. The remainder of our budget comes from endowments, which are critical since they help support staff and summer student salaries. Your gifts to our endowments helps us improve visual, educational and inspirational experiences for all our visitors!

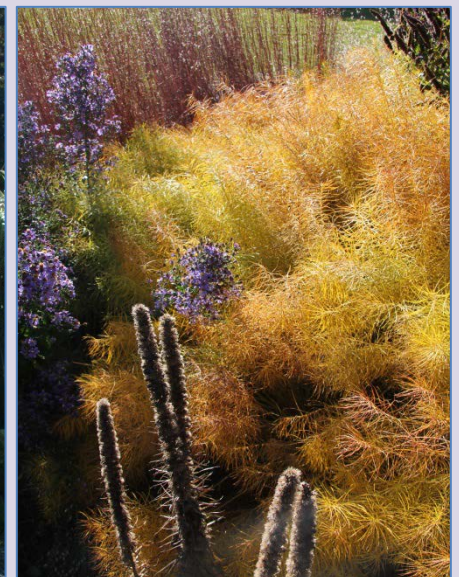


To contribute directly to our endowment, consider sponsoring a brick, bench, lamp or garden bed. Tributes can be made to honor special person(s) or occasion(s) in your life. For more information, visit our [website](#)

Contact: Art Cameron, MSU Horticulture Gardens Director, [cameron@msu.edu](mailto:cameron@msu.edu)  
Samantha Adler, Assistant Director of Development, [adlersa2@msu.edu](mailto:adlersa2@msu.edu)



## A Sampling of Summer in the Gardens



*please help us grow...*

