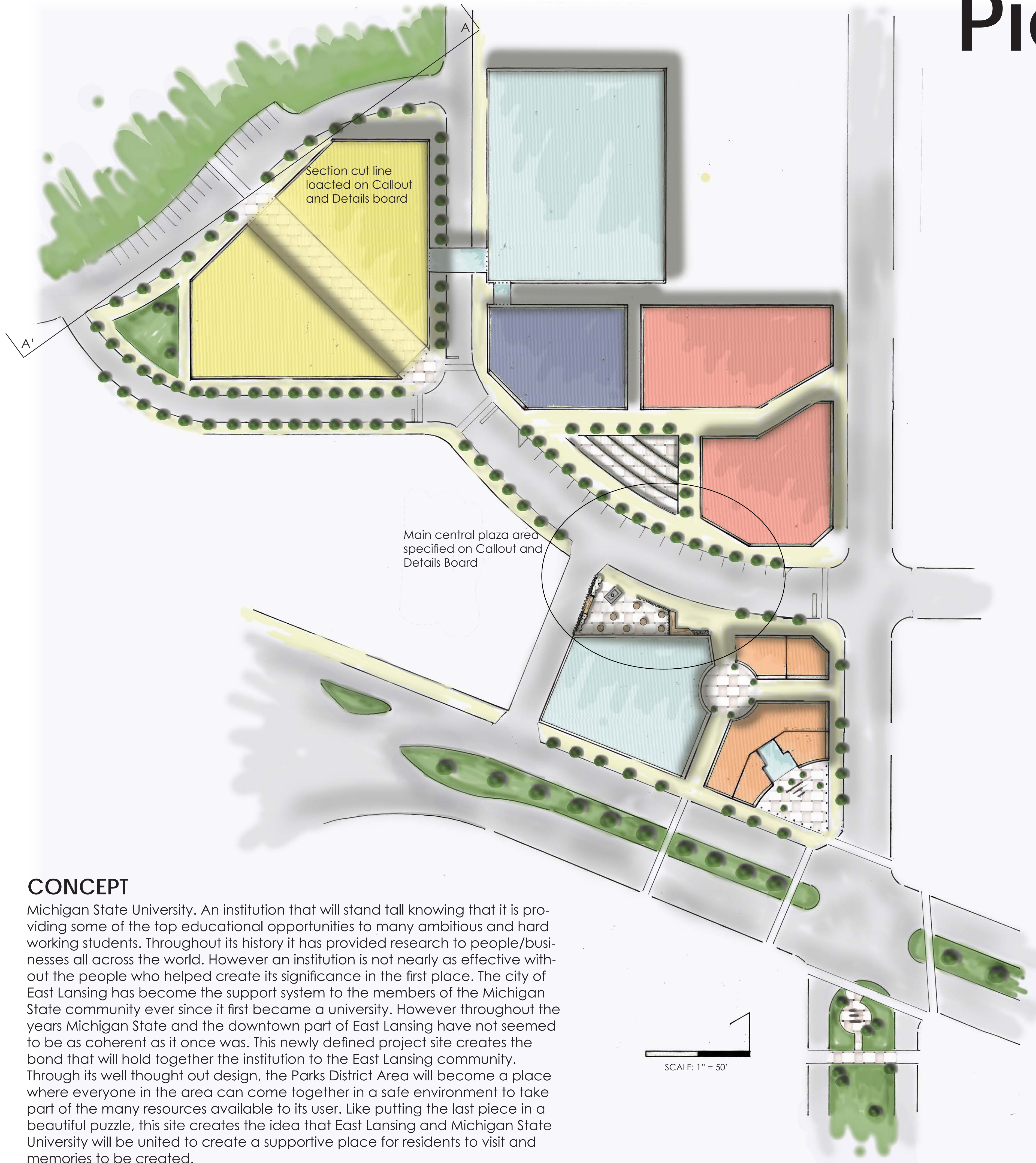


The Park District

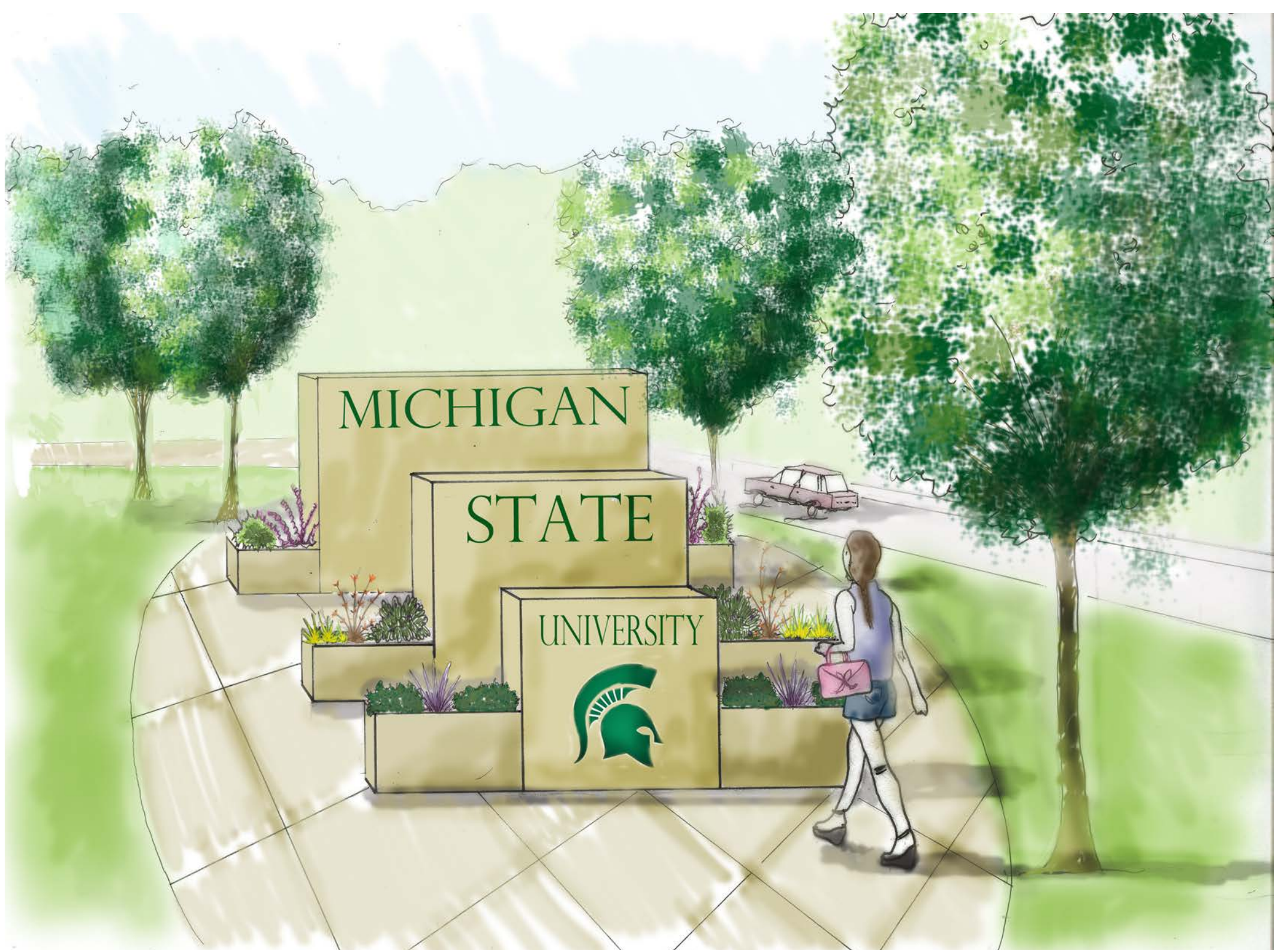
Piece of the Puzzle



CONCEPT

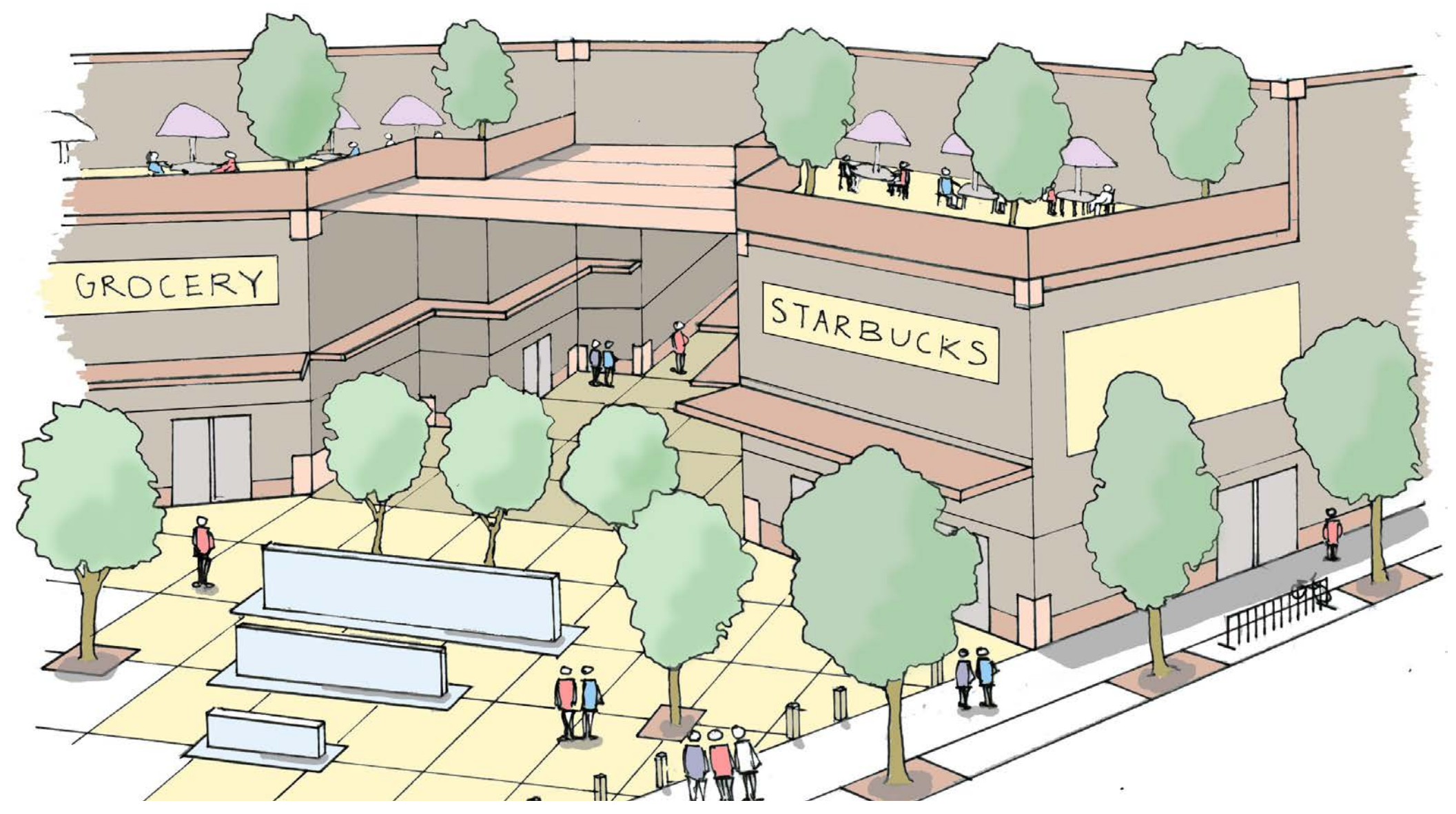
Michigan State University. An institution that will stand tall knowing that it is providing some of the top educational opportunities to many ambitious and hard working students. Throughout its history it has provided research to people/businesses all across the world. However an institution is not nearly as effective without the people who helped create its significance in the first place. The city of East Lansing has become the support system to the members of the Michigan State community ever since it first became a university. However throughout the years Michigan State and the downtown part of East Lansing have not seemed to be as coherent as it once was. This newly defined project site creates the bond that will hold together the institution to the East Lansing community. Through its well thought out design, the Parks District Area will become a place where everyone in the area can come together in a safe environment to take part of the many resources available to its user. Like putting the last piece in a beautiful puzzle, this site creates the idea that East Lansing and Michigan State University will be united to create a supportive place for residents to visit and memories to be created.

ENTRANCE TO MSU CAMPUS



The re-defined entry into Michigan State University creates an iconic image that many people will proudly stand by to get their picture taken next to show their friends/families. No longer will visitors question whether they are entering campus or not. This piece of artwork proudly states that this is Michigan State University and that they are proud to let the world know. On the marble faces, etched into its surface reads all the major moments in both the history of the University and the city of East Lansing. Visitors will happily walk away from the entry knowing that they are helping to create history for the community and University alike.

ENTRANCE PLAZA



The main plaza entry at the corner of Grand River Ave and Abbot Road offers the opportunity for pedestrians to take some time out of their days to sit around and enjoy the beauty of East Lansing. The rooftop café space creates a relaxing view over Michigan State's campus. Enjoying products from the Farmer's market, pedestrians can leisurely enjoy the many built spaces of the corner plaza. An Urban Grocery store allows residents of the neighboring areas affordable and very convenient food/drink products within walking distance.

The Park District

Natural Features

Vegetation:

The areas marked "A" show locations on/around the site that have high levels of vegetation. The largest being an off-site location across the street from the design site. Most trees located in the heavy vegetated areas are non-ornamental species. With the exception of the few highly vegetated areas, the site contains a minimal amount of vegetation. Street trees, some ornamentals and some non-ornamentals, make up the greater part of vegetation on the site. Most shrubs on the site have not received the most of upkeep for maximum aesthetic appeal.

Temperature:

From April to September in the city of East Lansing, the average temperature tends to vary from 60-75 degrees Fahrenheit. From October to March the average temperature can be anywhere from 20-50 degrees Fahrenheit.



Topography:

Much of the design site contains minimal change in topography. The location marked "B" on the map shows a moderate to severe sloped section of the site. Currently the slope creates a view for the residential housing units located at the top of hill looking over the Valley Court Park.

Open Space Area:

The light green marked spaces indicate areas where mowed green space currently are. In the area marked "C" indicates the Valley Court Park area. This very large park contains a play structure, tennis courts, and a baseball/softball diamond. With the exception of Valley Court Park, the only open green space throughout the site consists of small mowed lawns in front of various structures.

Existing Structures

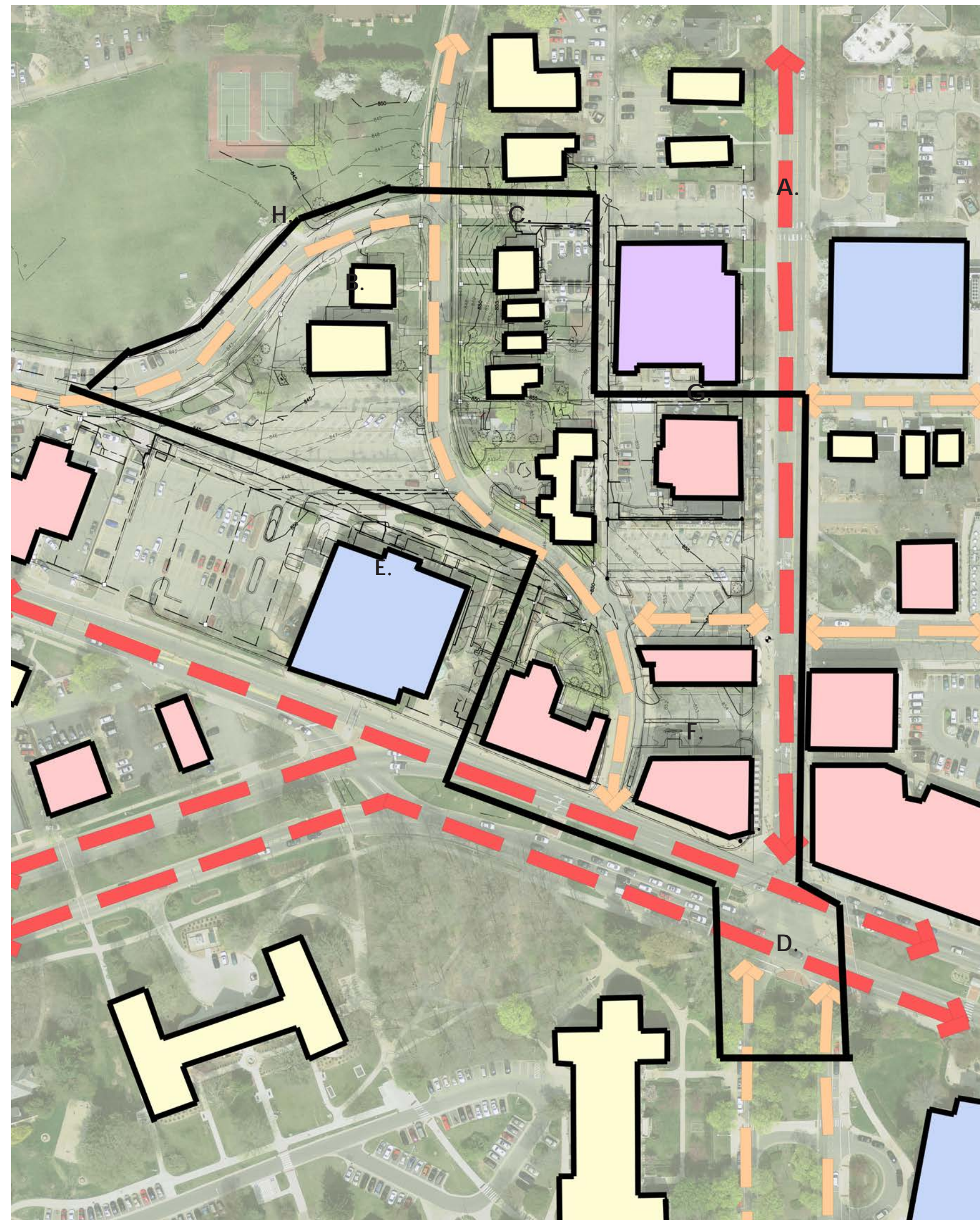
A. Abbot Road: This North-South road is one of the most defined in the state of Michigan. Through its current design, traffic tends to back up on special occasions. During the academic year, students use this route to commute from apartment complexes north of campus.

B. Apartment complexes have been out of commission for some time now. The structure itself is very worn down and the parking lots around it are filled with overgrown vegetation.

C. These housing units are fairly new. They are built on top of steep topography and overlook the Valley Court Park. Most residents in these houses are students at nearby instructional facilities.

D. The Northern entry way into Michigan State University is heavily used by foot and vehicular traffic coming off of Abbot Road. There is currently a monument greeting those who enter the campus.

E. Located just west of the design site is the People's Church of East Lansing. The architecture of the building captures the attention of many people throughout the community. On the east side of the building, a meditation/ thought garden creates a peaceful place for people to reflect on their thoughts.



F. These buildings have remained vacant for the past decades. Some time ago a State Theatre used to have a structure on this part of the site. Recently a Thai Hut, Credit Union, and a dance studio used to occupy these structures. The Fire Marshall stated that the buildings are not up to fire standards in the State of Michigan. Most of the structures contain Asbestos throughout the floors and ceilings.

G. Dublin Square: One of it's main attractions is the outdoor seating area on the southern side of the building. Established in 2006, this bar/restaurant contains an Irish theme throughout its design. The 8,000 square foot interior contains carpentry from Ireland itself.

H. The Farmer's Market uses this paved parking area 20 days out of the year for its products/ events. It is a very popular event for the people in the East Lansing Community.

I. Grand River Ave: This 210 mile road structure runs throughout much of the state of Michigan. Created originally as an Indian Trail it is now a very heavily utilized roadway system. Traffic tends to back up on special occasions in the city of East Lansing.



Property Owner mentioned that all buildings on the site will be torn down and re-designed. Many of the current buildings are not up to fire standards in the State of Michigan.

A. Grand River Ave: Heavily traveled road creates the opportunity to capture the attention of many visitors in the area. Crosswalks need to be re-designed to assure the safest conditions for pedestrian and bike travel.

B. Abbot Road: Traffic backs up way too often. Suggest creating another lane of travel if possible to avoid the daily commuter traffic back-up. Another opportunity to create commercial attraction to street travelers.

C. Entrance to Michigan State University Campus: Lacks a prominent greeting into campus. Needs something to make a memorable impression on both pedestrian and vehicular traffic. The amount of foliage supports the image of being a green school.

D. The steep topography presents a difficult but very creative approach in terms of designing. Try to maintain the view over Valley Court Park from the top of the hillside.

E. Valley Court Park: Beautiful green space in the middle of a very residential part of the city. Maintain views to create the image of the park being a destination.

F. Farmer's Market: Generally an aesthetically pleasing area however there is not enough foot traffic when comparing it to the intersection close to Grand River Ave and Abbot Road. Try to maintain it's beauty while attracting more attention from the community.

G. Dublin Square: Beautiful aesthetics and theme to its foundation. Try to maintain its character while placing it in the same general area due to convenience to downtown East Lansing night life.

H. Properties on the corner of Grand River Ave and Abbot Road offer high demand opportunities for retail/food services. Select something for the corner that creates interest and brings something unique to the city of East Lansing.

I. The People's Church: Offers great volunteer activities and provides a lot of foot traffic on mass days. Respect the meditation garden surroundings.

J. Retail/Restaurants: Many opportunities for pedestrians to shop and eat at various chain and individually owned stores. Contains several areas for night life activities.

Project Site Location

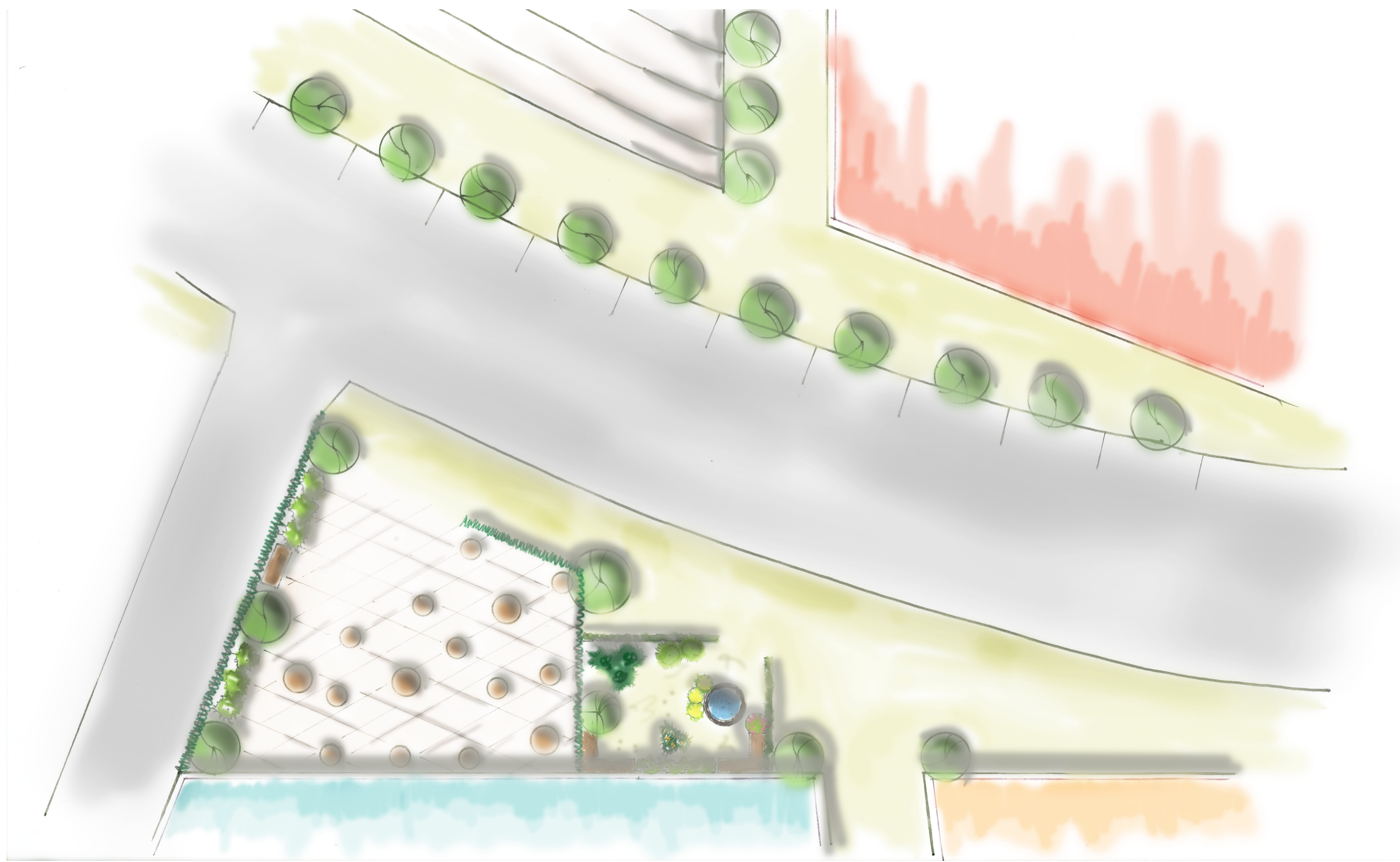
The City of East Lansing of Ingham County in Central Michigan

Population: 48,579

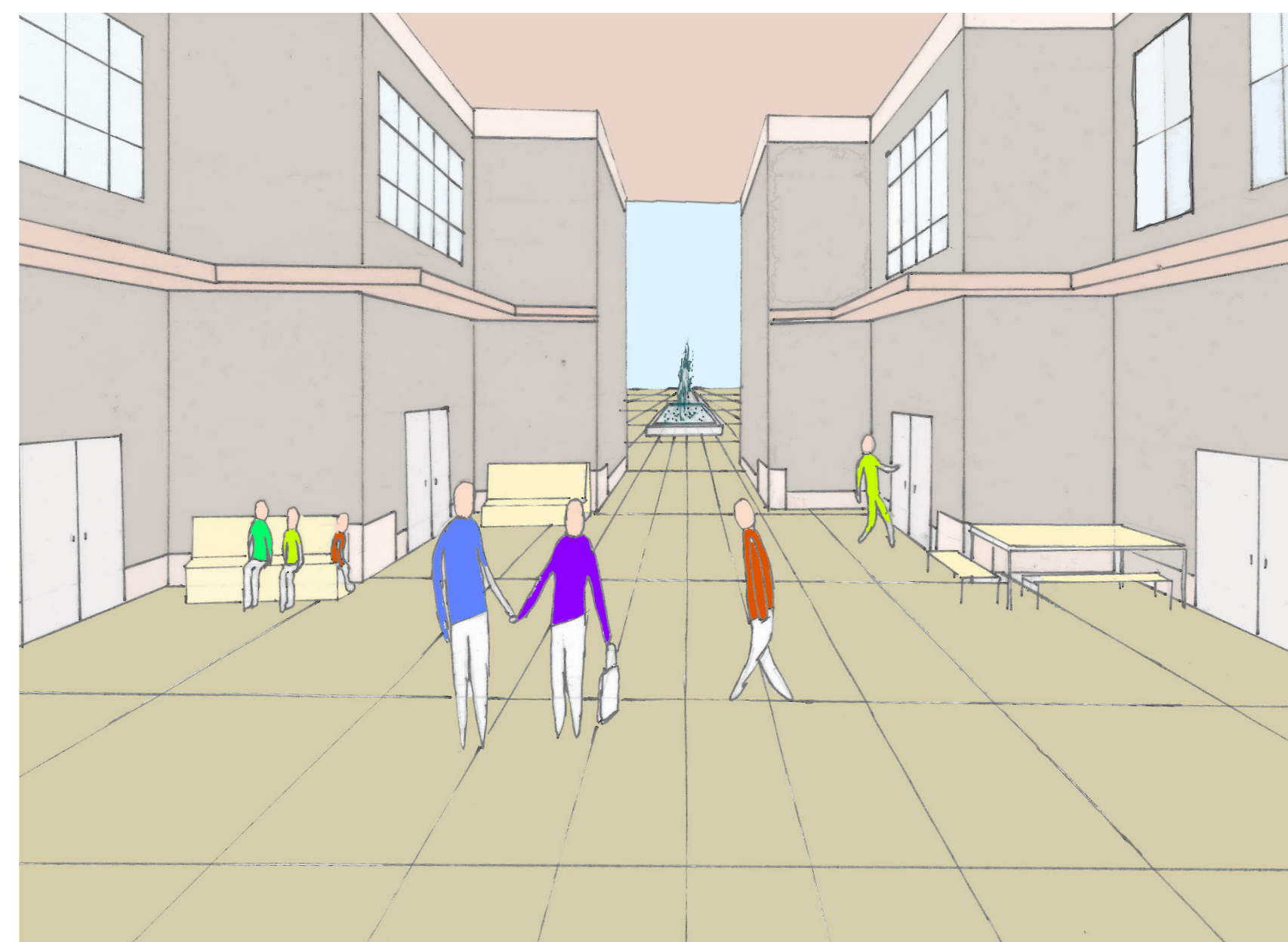
Total Area of Land: 13.67 sq. miles



The Park District

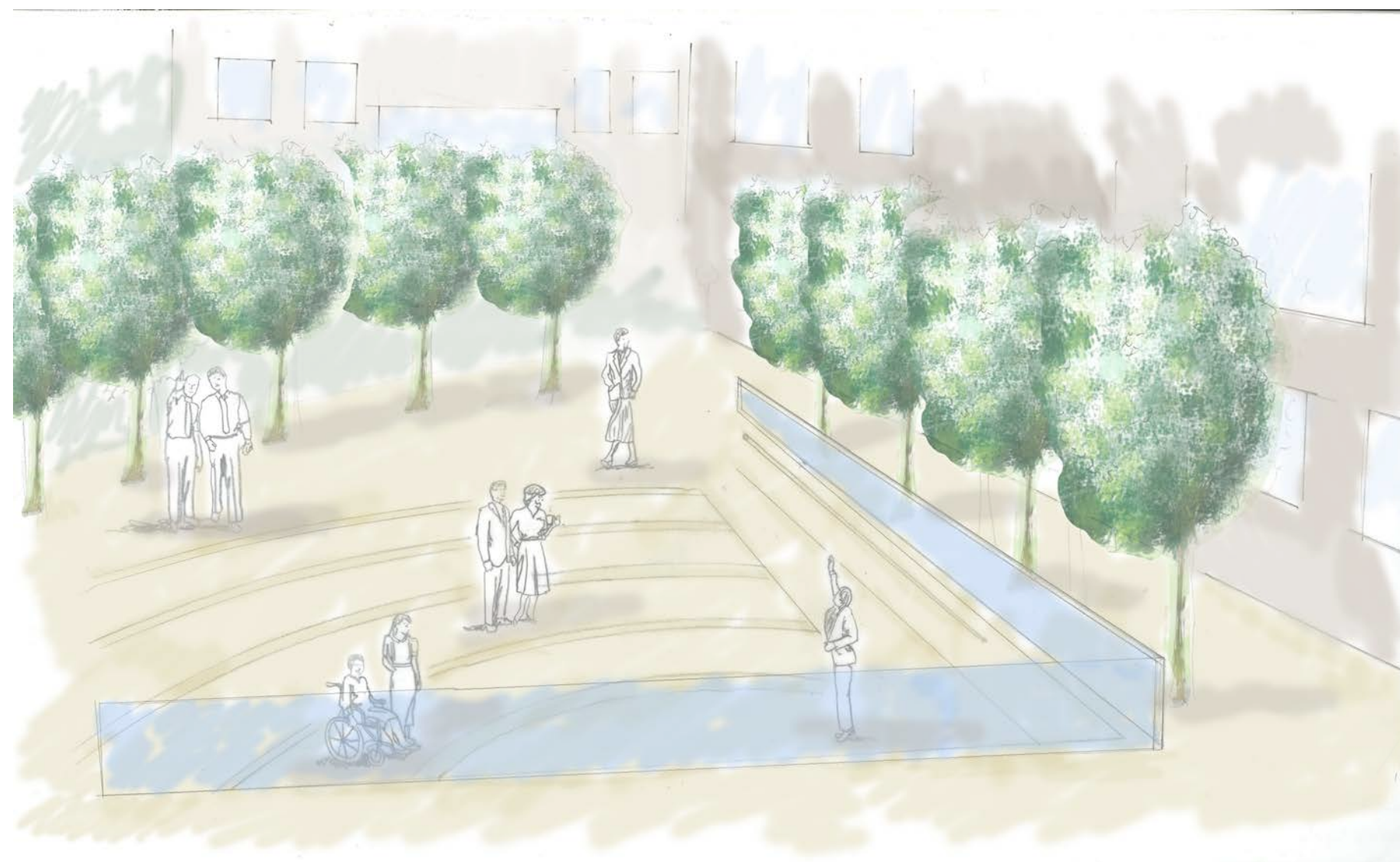


ATRIUM SPACE

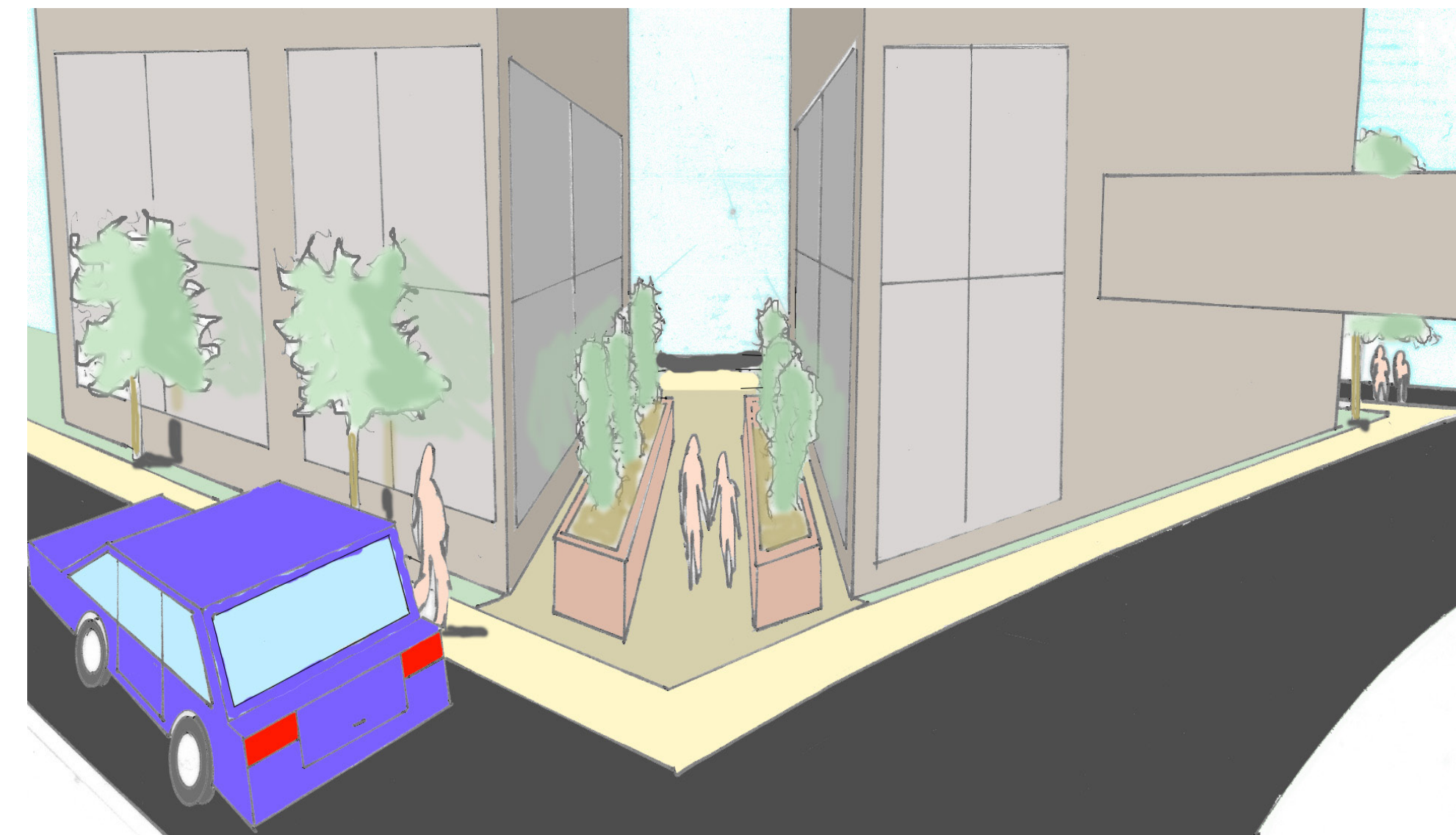


The atrium in the corner plaza creates a weather protected area while still enjoying the beauty city life of East Lansing. Patterned pavement creates a more elegant space while still being very affordable. The interesting brick architecture with many glass panels creates a modern yet classy character to the space as well. While in the atrium space, pedestrians are intrigued to progress through the site when noticing the beautiful fountain in the middle of the near courtyard.

URBAN AMPHITHEATER



Enclosed by the large buildings, the urban amphitheater creates an interactive environment for everyone. Whether it's a person on lunch break, a class taking a trip outside, or a gathering of people watching a local performance, the designed amphitheater allows people to stray away from the everyday hecticness to enjoy a relaxing break in a very active downtown space.



HOTEL WALKWAY

The large space through the middle of the hotel is full of opportunity for pedestrians. With hotel windows facing in towards the walkway a sense of belongingness is created in the area. Whether its stands for the Farmer's Market, or art displays for local festivities within the community, this space accommodates an interesting environment that many may not be used to. Standing in an outdoor/indoor five story tunnel that is monumentally scaled to create a sense of excitement for pedestrians. With retail stores aligning the inside walkway, people will have plenty to do while strolling from the nearby Valley Court Park.

ALBERT ENTRANCE

At the corner of Albert St. and Abbot Road, pedestrians are welcomed by the newly designed Dublin Square. Featuring a brand new rooftop bar space, Dublin Square will attract many guests looking to have a classy time in a beautiful city. Progressing through the east entrance way, pedestrians will be overwhelmed with the historic character of the architecture in a very modern and sustainable way.



CROSS SECTION OF HOTEL AREA A - A'
Not to Scale

