

SPDC Industry Seminar Series

**Home Building in Michigan:
Surviving the Cycles**









Home

**Mayberry Homes is a
family-oriented team
passionately committed to
creating lifestyle
communities.**



**We at Mayberry Homes
believe that with success
comes a social responsibility
to our team, our clients,
and our community.**



Mayberry
1.0



National Award Winning Architects



Don Evans

The Don Evans Group



Barry Berkus

Berkus Design Studio









PICKY. PICKY.

Choose The Best Location. Choose The Best Lifestyle.

MODEL OPEN 7 DAYS A WEEK!

Play Here And Your Game Might Improve.

Move Here And Your Life Definitely Will.

- Elegant, enviable lifestyle
- Imaginatively designed, easy-living detached and twin condominium homes
- Located on the area's newest championship golf course



GLE
YE
MILK LMS

ALL NEW!

ALL NOW!

ALL WOW!

*These Are The Homes,
This Is The Neighborhood
That You Just Have To See!*

Everything about this neighborhood is new, different, better than you ever could imagine. Our homes are designed for pure pleasure - inside and out. And right outside your door is a world of family fun! Many of the homes are located around a beautiful community park. Golf is as close as The Falcon - a nine hole golf course next door. And just minutes away are the new East Lansing Aquatic Center, Northern Tier Trail, Abbott Park and shopping at Eastwood Towne Center. Visit Hawk Nest today!

**Single Family
Homes From
The \$160's**



Cadledge Rd., north of Lake Lansing Rd. to Coleman Rd. East on Coleman Rd. to Hawk Nest community.
(517) 668-0800



OPEN MON. - FRI. 1-6;
SAT. & SUN. 12-5

**Mayberry
Homes**

www.MayberryHomes.com

PREPARE TO BE WOWED!

Model Grand Openings!

**Three New Beautifully
Decorated Models...
One Superior Name
In Homebuilding!**

Inside, you'll discover more space, more comfort, more convenience. Outside, enjoy strollable streets, a community park and a location second to none. Visit Now!



**Single Family Homes
From the Mid \$150's**



Head For Home!



**We Have Just
What You're
Looking For...
Right Where
You Want
To Live!**

At Mayberry Homes, we know that where you live makes a big difference in how you live. So we've carefully selected community locations that are as scenic as they are convenient. From the rolling greens of a golf course setting, to the lush surroundings of a nature preserve ... everything is just a stone's throw away.

It's just part of the Mayberry Homes mission: to create a simpler, better way of life, in communities of old-fashioned charm. Superior craftsmanship ... a sense of casual grace ... neighborhoods like those you remember from your childhood. It's all part of our promise to build you the perfect place to call home. Visit today!

- **Hawk Nest - Single Family Homes From The \$160's**
- **Eagle Eye Condominiums Attached & Detached Condos From The \$300's**
- **Vistas At Eagle Eye - Coming Soon!**
- **Okemos Preserve - Coming Soon!**



(517) 371-5000

www.MayberryHomes.com

Our Version Of Morning Drive Time.

Eagle Eye... Life As It Should Be.

Looking for a home – and lifestyle – that fits you to a tee? You'll find it at Eagle Eye! Imagine extraordinary, detail rich condominium homes, set among rolling greens and spectacular vistas. The ease of low-maintenance living.

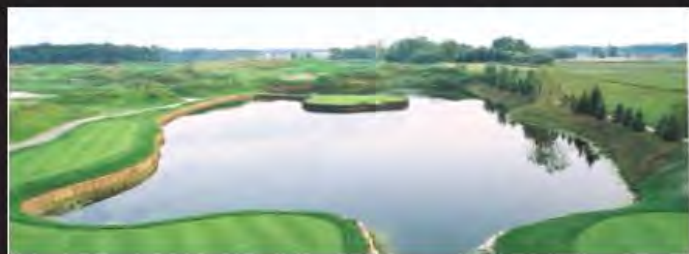
The luxury of championship golf – right in your backyard. All designed and built by the area's most respected builder, Mayberry Homes.

Why settle for less? Come see the spectacular lifestyle that could be yours today!

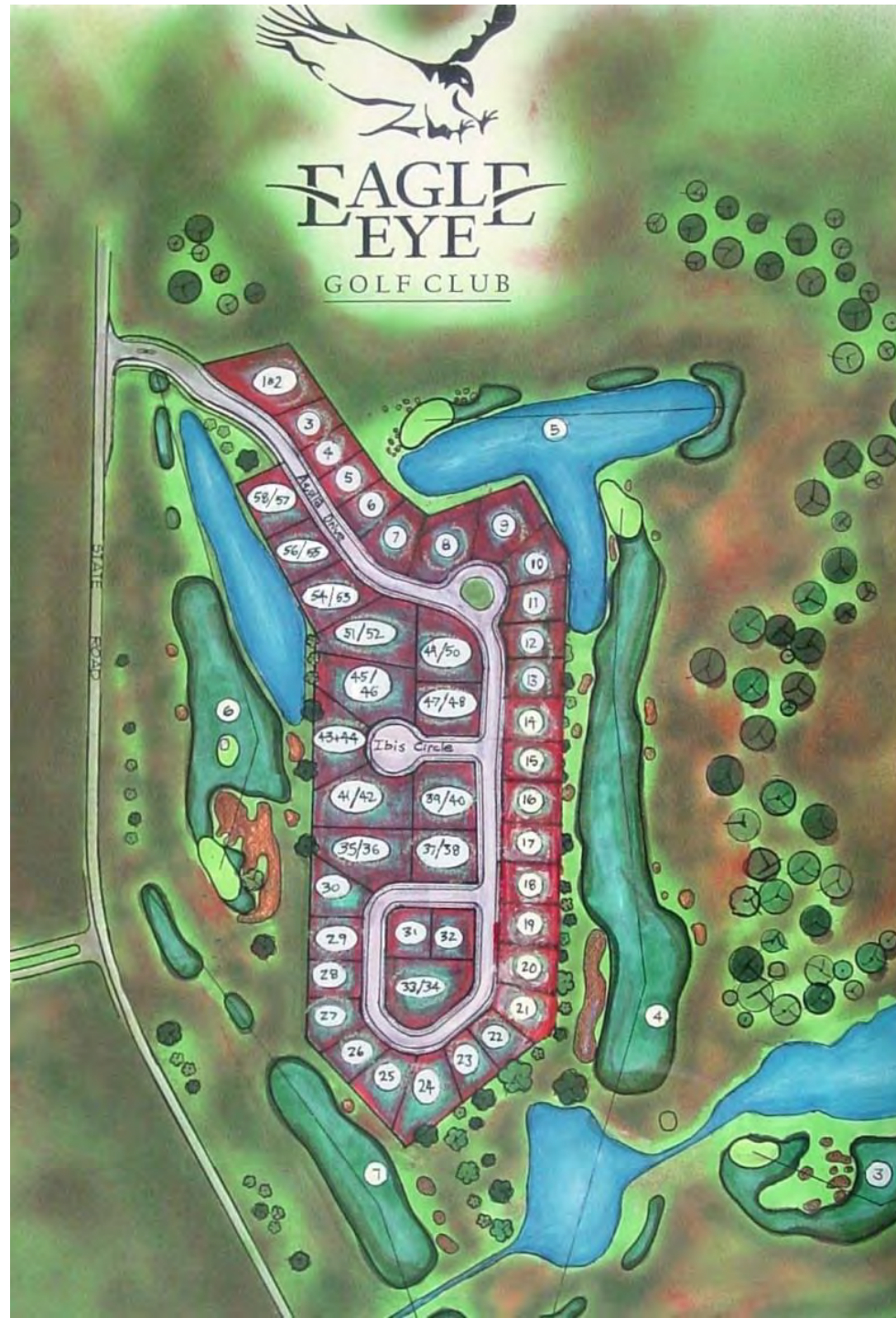


CONDOMINIUMS

Dir: Take Coolidge Rd. north of Lake Lansing Rd. to State Rd. east to Eagle Eye Condominiums. Open daily Mon.-Fri. 1-5, Sat. & Sun. 12-5. Brokers Welcome.



Fabulous Low-Maintenance Homes On Eagle Eye
Golf Course From The Low \$300's
(517) 371-5000 • www.MayberryHomes.com

















HULETT ROAD

MORNING GLORY DRIVE

12' LANE NORTH

TAPESTRY DRIVE

12' LANE SOUTH

ELDERBERRY DRIVE

VERANDA PLACE

PRESERVE AREA

WETLAND AREA

WETLAND AREA

WETLAND AREA

ELDERBERRY DRIVE

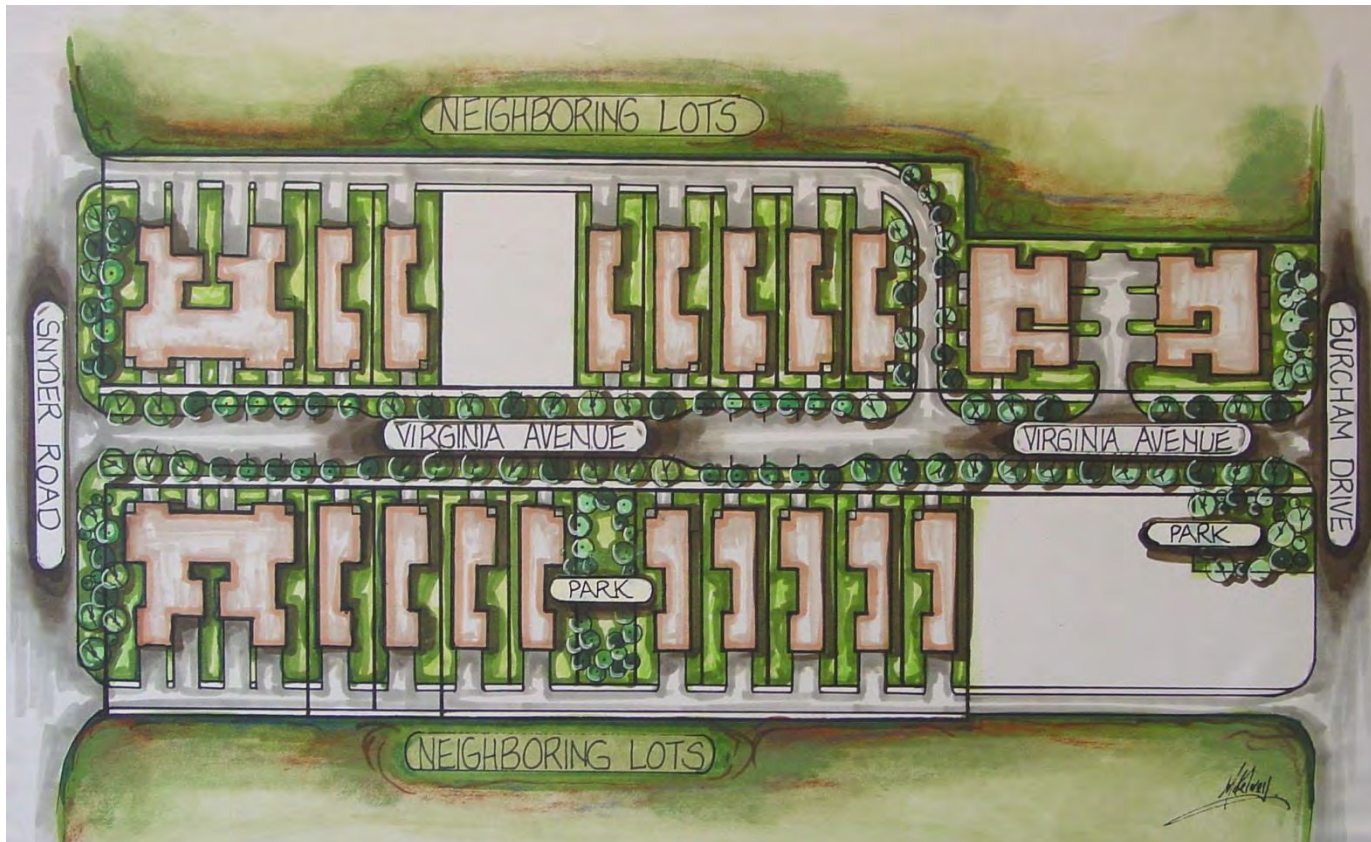
McKell







AVONDALE *Square*











2005 No. 2 in
Customer Satisfaction



2006 No. 1 in
Customer Experience



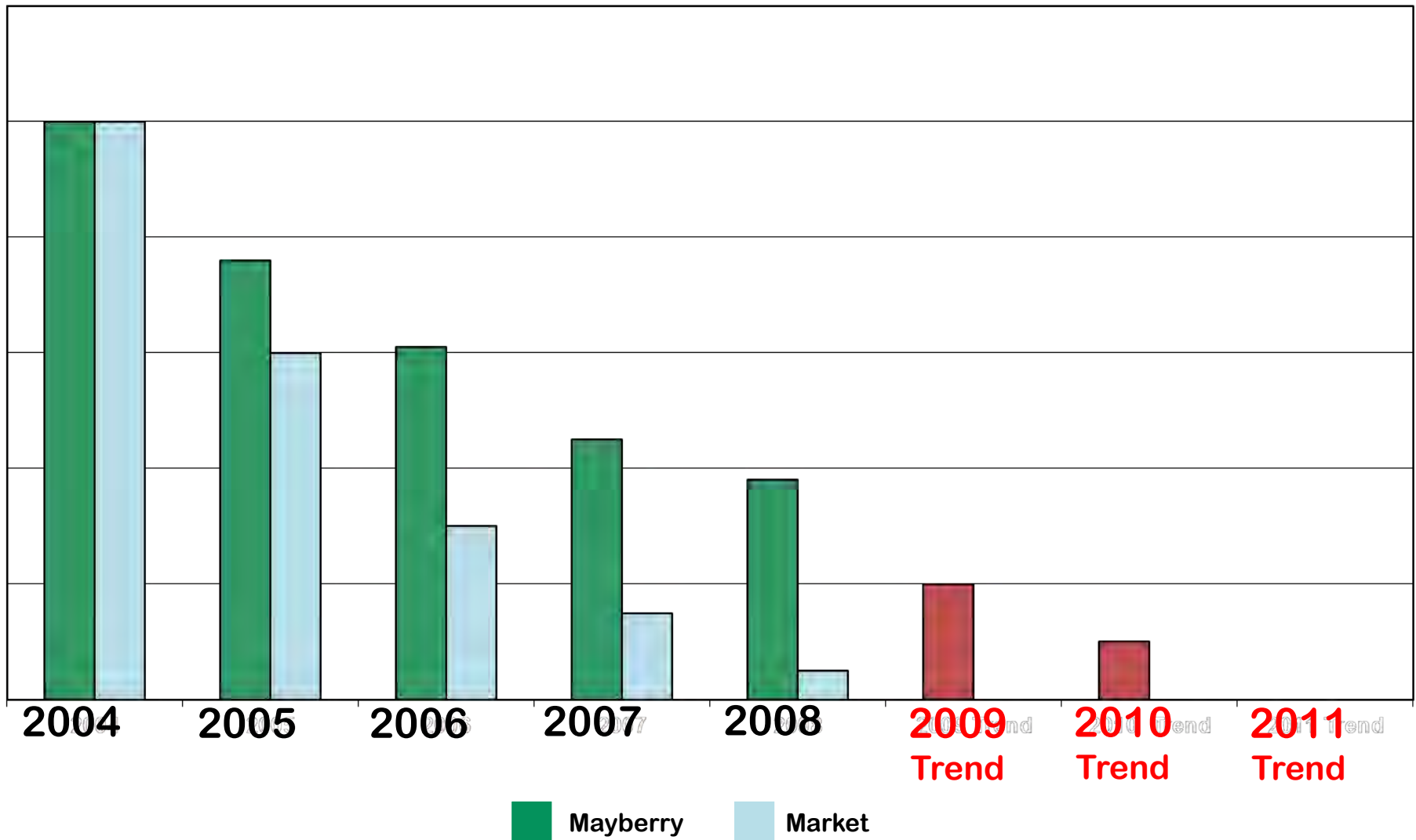
ALSAC • Danny Thomas, Founder





"I THOUGHT WE WERE JUST BUYING A HOUSE!"

Total Closings



Extreme MAKEOVER HOME EDITION







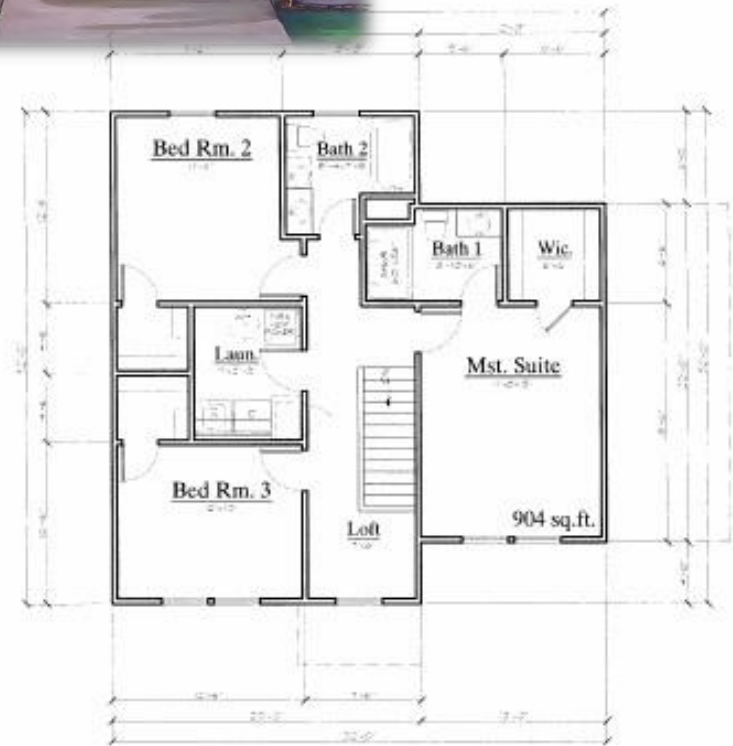






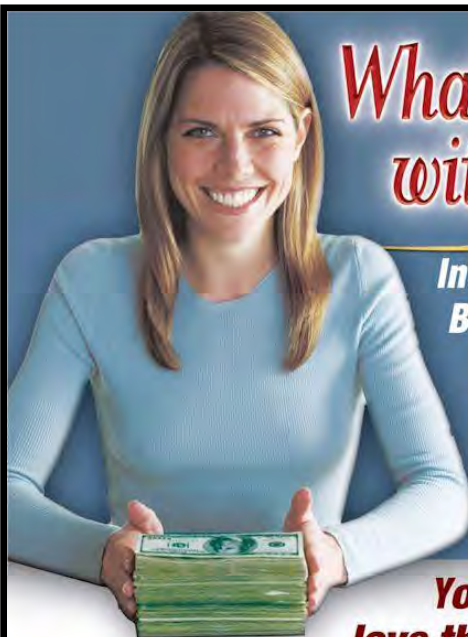


Mayberry
2.0









What's the big deal with Mayberry Homes!

Introducing The **Heritage Collection...**
Bigger homes from the \$130s!

**Sunday, July 27th From 12-5pm –
Come Sneak A Peek At Our
Just Completed Model At
The Gardens In Mason!**

**You're going to
love these homes –
with up to 5 bedrooms and 2 baths.
Count on Mayberry to always give
you more – including peace-of-mind
at no extra charge!**



MayberryHomes.com

To Learn More About The Heritage
Collection, Visit Our Communities
Or Our Website Today!

- **NEW! The Gardens - Single Family Homes In Mason From \$130,000.** Directions: Located between Holt and Mason. College Road south of Holt Road (just north of Cedar St.), west on Fernwood. **517-712-3310**
- **Hawk Nest - Single Family Homes In East Lansing (Lansing Schools) From \$130,000.** Directions: Coolidge Rd. north of Lake Lansing Rd. to Coleman Rd. East on Coleman Rd. to Hawk Nest community. **517-712-3310**
- **Evergreen Village - Single Family Homes In Holt From \$133,000.** Directions: Grovenburg Rd. south of (new high school) Holt and Krantz Rds., east on Boxwood Ave. to entrance. **517-712-3310**
- **Shady Brook - Single Family Homes In Dewitt From \$145,000.** Directions: Clark Rd. west of the I-69 overpass, between Schavey & Dewitt Rds., east of Panther Dr. on the north side of the road. **517-712-3310**

Broker Participation
Invited



You're Young. You're Smart.
You're **RENTING?**

**NO
WAY!**



*Mayberry Homes
Makes It Easy For You
To OWN A Beautiful
New Home!*



Rip Up Your Rent Check!

Why rent
when
you can
OWN
a bigger,
better
home
**FOR
LESS!**

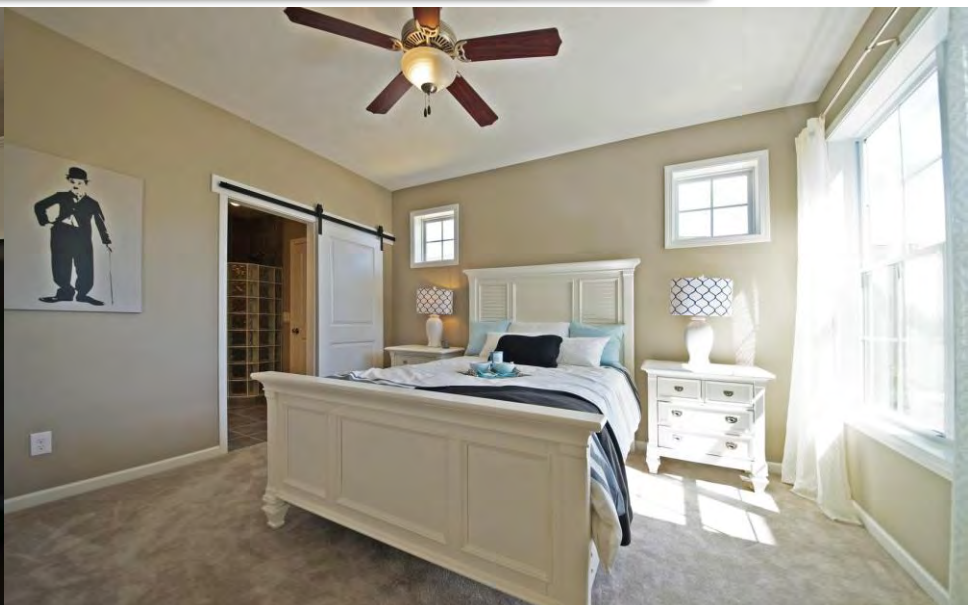


Mayberry
3.0



mayberryhomes









Floorplans To Fit Your Lifeplans



\$150's – \$550's

mayberryhomes.com

**Looking
for a new
home?**



**Mayberry
Homes.com**
From the \$140's

OMG

OMG

Oh! Mayberry's Great

LOL

LOL

Lap Of Luxury

BTW

BTW

Built To Wow



There's
No
Place
Like
Home



Room For You And
Your Little Dog Too
mayberryhomes.com mh



There's No Place Like
mayberryhomes.com

mh



mayberryhomes.com



CUTTING
EDGE
DESIGN

Your dream home? We'll  it.

mayberryhomes.com mh

Turning heads  for over 10 years.

mayberryhomes.com mh

We build the home.
You build the memories.





We build the home.
You build the memories.



We build the home.
You build the memories.



We build the home.
You build the memories.



We build the home.
You build the memories.



#Empty



Nest



#NewDigs

#New Addition





Find your way home.

mayberryhomes.com mh

Cool details.





Designs so hot you'll need a cold shower.



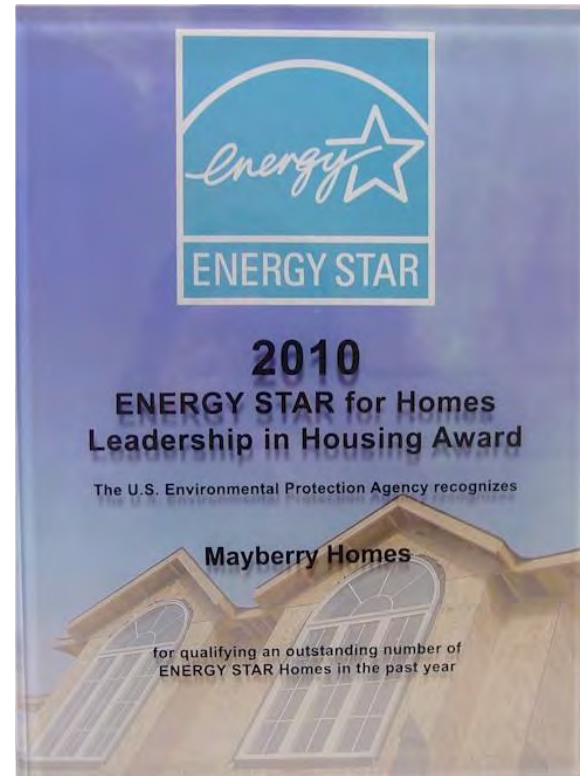
Your island retreat.



2008 Ballentine Award



2010, 2011, 2012, 2013 & 2014
**ENERGY STAR Award for
Building 100% ENERGY STAR
Qualified Homes**

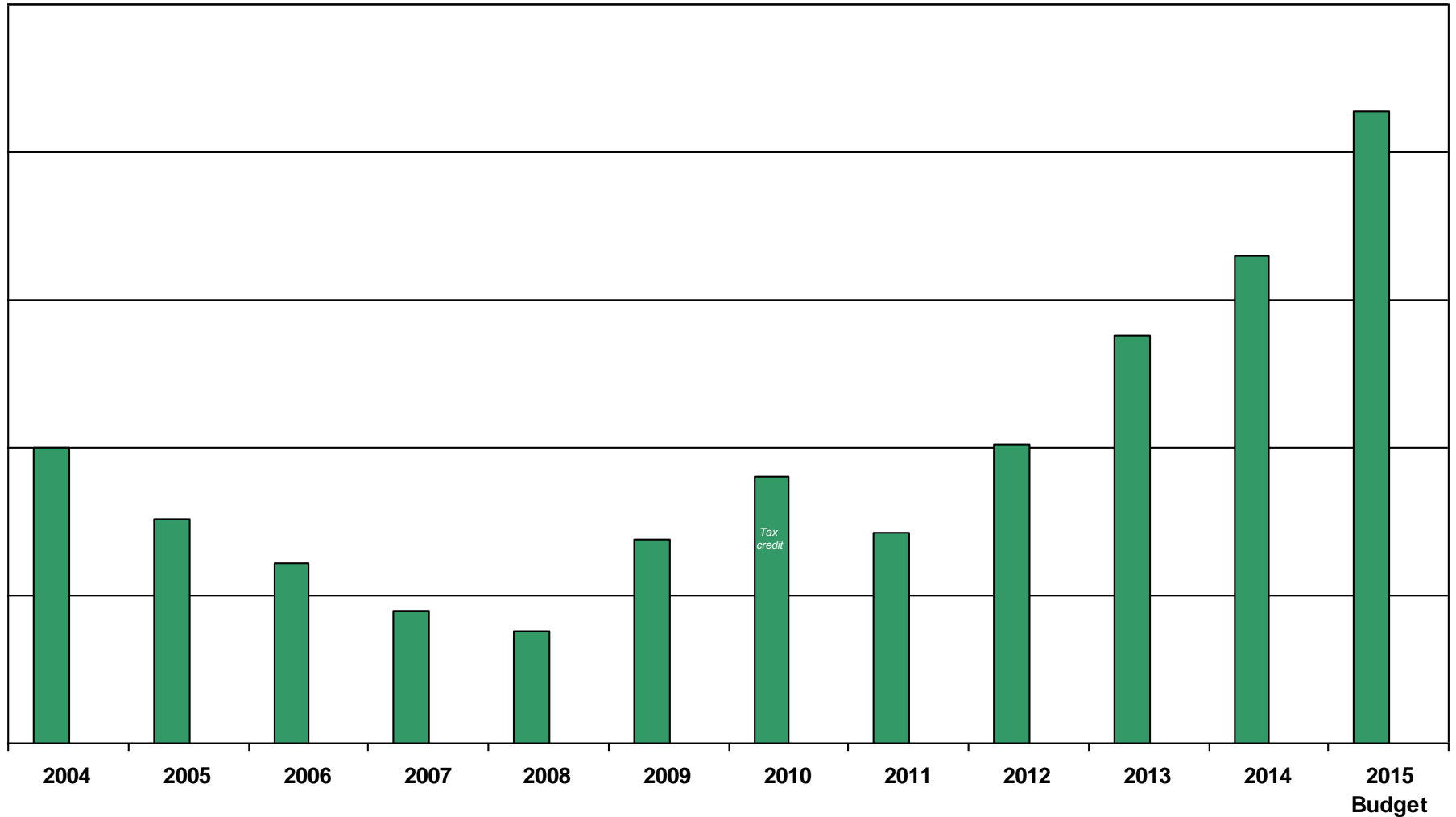


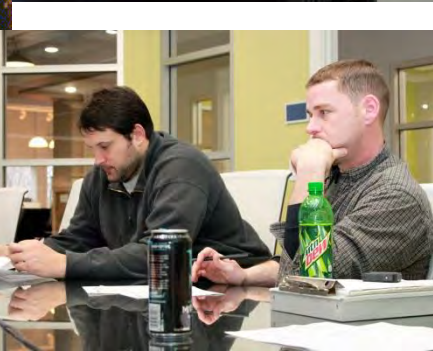
2013 Inducted into the Michigan Construction Hall of Fame





Total Closings







mayberry homes