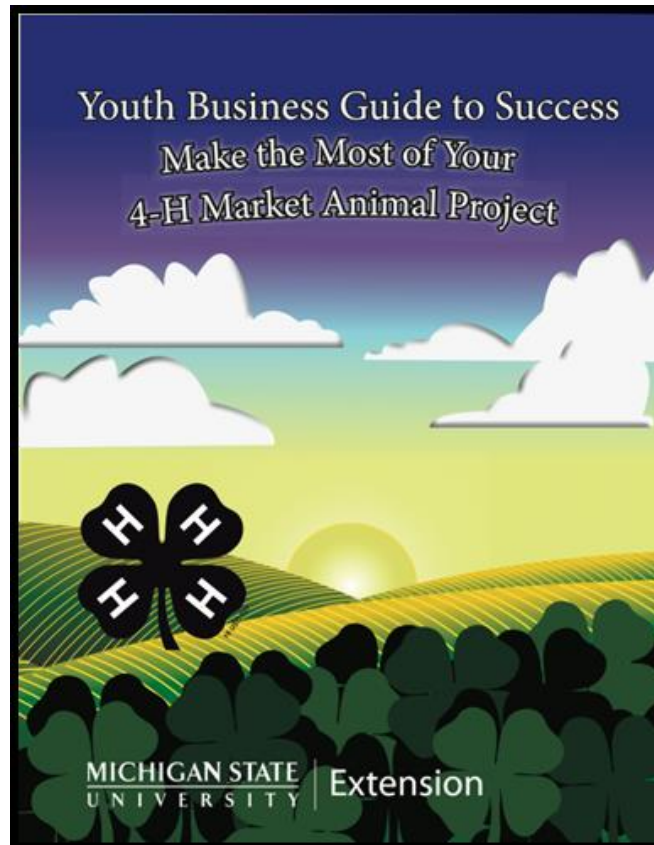


This image of a good marketing flyer example is intended to be used with the Youth Business Guide to Success: Make the Most of Your 4-H Market Animal Project curriculum.



MSU is an affirmative-action, equal-opportunity employer. Michigan State University Extension programs and materials are open to all without regard to race, color, national origin, gender identity, religion, age, height, weight, disability, political beliefs, sexual orientation, marital status, family status or veteran status.

MICHIGAN STATE
UNIVERSITY | **Extension**

Animal Show Dates and Times

- Open Steer Showmanship-Tuesday, August 5th at 2:00 PM
- Steer Market Classes-Tuesday, August 5th at 6:00 PM
- 4-H Steer Showmanship-Wednesday, August 6th at 9:00 AM
- 4-H Sheep Showmanship-Monday, August 4th at 7:00 PM
- Open Steer Showmanship-Tuesday, August 5th at 9:00 AM
- 4-H Lamb Market-Tuesday, August 5th at 10:00 AM

Auction Date and Line-up

This year due to so many market animals, there will be two auction rings. One for the smaller animals and another for the larger animals.

- 8:00 AM- 4-H Auction Registration begins
- 9:00 AM- 4-H Large Animal Livestock Market Auction - Haberlein Arena
Swine, Veal, Dairy Feeders, Jr. Beef, Steers
- 12:00 PM-4-H Small Animal Livestock Market Auction Rosa Arena-Order of Market Animals-Turkeys, meat chickens, Ducks, Cornish Hens, Geese, Goats, rabbits, Cavies, Lambs
- 1pm to 2pm - 4-H Buyers' Luncheon provided by our club (Gotta Luvva Cool critter 4-H Club).
- If you have any questions you may contact our mom, Tammy, at _____ or our dad, Nathan, at _____

Options for bidding on or

purchasing a market animal:

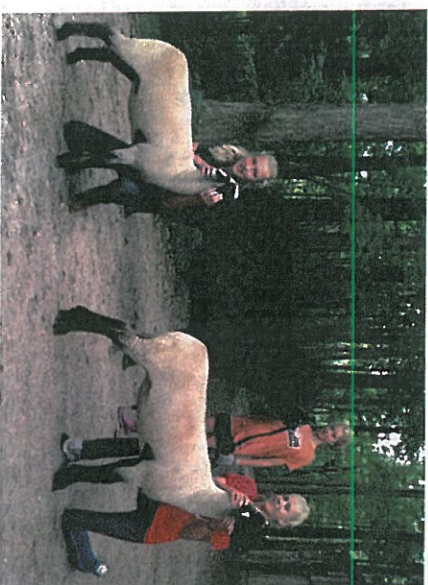
1. Just by placing a bid on a market animal, you are supporting the 4-H member and the 4-H Livestock Program.
2. You may purchase an animal for its meat. When you check out and pay for your animal at the end of the auction you will be given a list of processors to choose from. The 4-H member will take care of everything else and the processor will call you when your meat is ready to be picked up.
3. Purchased animals may also be donated back to the 4-H program. Your purchase price will go to the 4-H member, the animal will then be re-auctioned and that money will go to support the 4-H program.
4. Another option is to donate your purchased animals to charities such as Father Fred, Goodwill's Fill the Freezer Program or other charities.

2014

Northwestern

Michigan Fair

"The Good Old Days-Vintage"



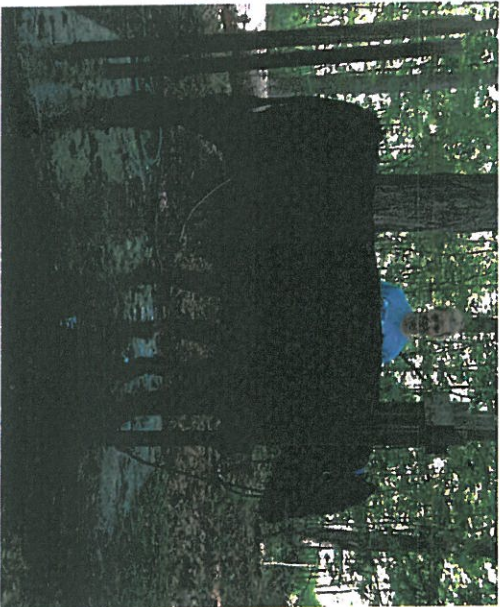
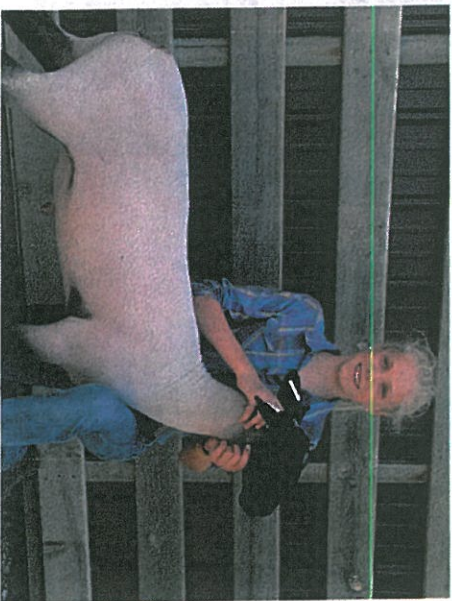
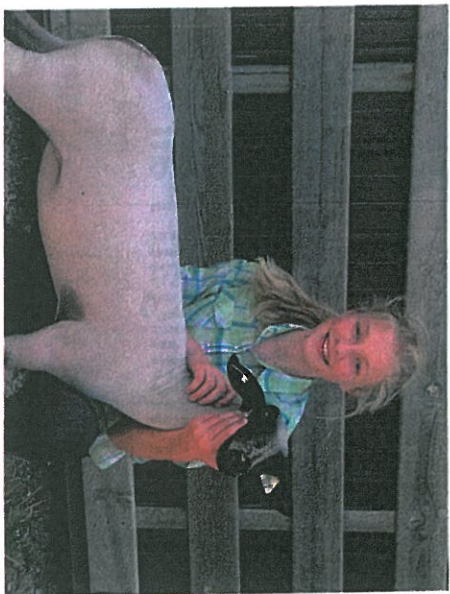
Graceanne with Napoleon

Emmalynne with Caleb

Joyana with Hazel

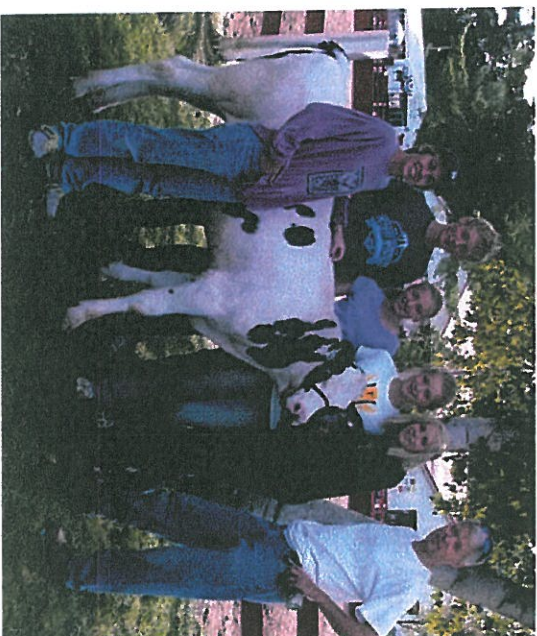
August 2nd—9th...

Hope to see you there!



We hope you have been having a fantastic summer. As fair draws closes we have spent more and more time with our animals, preparing them for shows. We have also been preparing for fair by making pen decorations with our kids. We hope to see you at the buyers picnic!!

On Thursday, July 31st, from 4p—7p there will be a buyers picnic held at the fair grounds for all past and potential buyers. A picnic style dinner is provided as well as music, performed by a live band, animals to look at, a "for fun" practice auction and many other family friendly activities. As 4-H members we will be volunteering our time at this event and we hope to see you there!



Northwestern Michigan Fair 2013

Tammy, Nicholas, Joyana, Graceanne, Emmalynne and Nathan along with the dairy feeder that was purchased and donated by the Noonan family farm for this year's buyer's lunch.